

# COMPLETE KIT TECHNICAL INFO. CATEGORY

ER COLLET SET	X-2
ER MILLING CHUCK SET	X-3
ER COLLET CHUCK SET	X-4
SHIN-YAIN MILLING CHUCK SET	X-5
EOC 32 MILLING CHUCK SET	X-6
TG 100 MILLING CHUCK SET	X-7
SKS/SBL/MLD COLLET CHUCK FULL SET	X-8
BALANCE STANDARD FORMULA LIST	Y-1
REFERENCE DETAILS	Y-2~3

# ER COLLET SET

ER 彈性筒夾組

[DIN ISO 15488]



MODEL NO.	PCS / SET	COLLET KIT			WEIGHT (KGS)
04200	ER8 x 9	5, 4.5, 4, 3.5, 3, 2.5, 2, 1.5, 1			0.15
04201	ER11 x 13	7, 6.5, 6, 5.5, 5, 4.5, 4, 3.5, 3, 2.5, 2, 1.5, 1			0.23
04202	ER16 x 10	10, 9, 8, 7, 6, 5, 4, 3, 2, 1			0.40
04203	ER20 x 12	13, 12, 11, 10, 9, 8, 7, 6, 5, 4, 3, 2			0.60
04204	ER25 x 15	16, 15, 14, 13, 12, 11, 10, 9, 8, 7, 6, 5, 4, 3, 2			1.70
04205	ER32 x 18	20, 19, 18, 17, 16, 15, 14, 13, 12, 11, 10, 9, 8, 7, 6, 5, 4, 3			2.60
04206	ER40 x 23	26, 25, 24, 23, 22, 21, 20, 19, 18, 17, 16, 15, 14, 13, 12, 11, 10, 9, 8, 7, 6, 5, 4			6.60
04207	ER50 x 17	34, 32, 30, 28, 26, 24, 22, 20, 18, 16, 14, 12, 10, 9, 8, 7, 6			8.45
L mm	D mm	CONCENTRICITY	ER-UP CLASS	ER-A CLASS	
6	1.0 - 1.4	0.015	0.005	0.01	
10	1.5 - 2.9	0.015	0.005	0.01	
16	3.0 - 5.9	0.015	0.005	0.01	
25	6.0 - 9.9	0.015	0.005	0.01	
40	10.0 - 17.9	0.020	0.005	0.01	
50	18.0 - 26.9	0.020	0.005	0.01	
60	27.0 - 34.0	0.020	0.005	0.01	

- ▶ UP = Ultra Precision
- ▶ ER-UP collets must be used with HSP Clamping Nut.
- ▶ The shank's concentricity must be less than h6.

#### Product information:

- ▶ Substitution for point 5 types is acceptable; price needs to be quoted additionally.
- ▶ ER8, ER11 and ER50 collets are packed with wooden boxes; ER16, ER20, ER25, ER32 and ER40 with plastic boxes.
- ▶ Collets of special sizes could be ordered by request.

# ER MILLING CHUCK SET

ER 銑床夾頭組

(DIN ISO 15488)



MODEL NO.	TYPE	COLLET SIZE / mm	DRAW BAR	WEIGHT (KGS)
04902	MTB3 x ER32 x 6PCS	6, 8, 10, 12, 16, 20	M12 x 1.75P, 1/2" - 12	2.50
04903	MTB4 x ER32 x 6PCS	6, 8, 10, 12, 16, 20	M16 x 2.0P, 5/8" - 11	2.70
04904	R8 x ER32 x 6PCS	6, 8, 10, 12, 16, 20	7/16" - 20	2.60
04905	NT30 x ER32 x 6PCS	6, 8, 10, 12, 16, 20	M12 x 1.75P, 1/2" - 12	2.40
04907	MTB3 x ER40 x 7PCS	6, 8, 10, 12, 16, 20, 25	M12 x 1.75P, 1/2" - 12	4.10
04908	MTB4 x ER40 x 7PCS	6, 8, 10, 12, 16, 20, 25	M16 x 2.0P, 5/8" - 11	4.00
04909	R8 x ER40 x 7PCS	6, 8, 10, 12, 16, 20, 25	7/16" - 20	3.90
04910	NT30 x ER40 x 7PCS	6, 8, 10, 12, 16, 20, 25	M12 x 1.75P, 1/2" - 12	3.80
04911	NT40 x ER40 x 7PCS	6, 8, 10, 12, 16, 20, 25	M16 x 2.0P, 5/8" - 11	3.90
04913	MTB3 x ER32 x 18PCS	3, 4, 5, 6, 7, 8, 9, 10, 11, 12, 13, 14, 15, 16, 17, 18, 19, 20	M12 x 1.75P, 1/2" - 12	4.00
04914	MTB4 x ER32 x 18PCS	3, 4, 5, 6, 7, 8, 9, 10, 11, 12, 13, 14, 15, 16, 17, 18, 19, 20	M16 x 2.0P, 5/8" - 11	4.15
04915	R8 x ER32 x 18PCS	3, 4, 5, 6, 7, 8, 9, 10, 11, 12, 13, 14, 15, 16, 17, 18, 19, 20	7/16" - 20	4.00
04916	NT30 x ER32 x 18PCS	3, 4, 5, 6, 7, 8, 9, 10, 11, 12, 13, 14, 15, 16, 17, 18, 19, 20	M12 x 1.75P, 1/2" - 12	4.00
04917	NT40 x ER32 x 18PCS	3, 4, 5, 6, 7, 8, 9, 10, 11, 12, 13, 14, 15, 16, 17, 18, 19, 20	M16 x 2.0P, 5/8" - 11	4.30
04919	MTB4 x ER40 x 23PCS	4, 5, 6, 7, 8, 9, 10, 11, 12, 13, 14, 15, 16, 17, 18, 19, 20, 21, 22, 23, 24, 25, 26	M16 x 2.0P, 5/8" - 11	8.45
04920	R8 x ER40 x 23PCS	4, 5, 6, 7, 8, 9, 10, 11, 12, 13, 14, 15, 16, 17, 18, 19, 20, 21, 22, 23, 24, 25, 26	7/16" - 20	8.30
04921	NT30 x ER40 x 23PCS	4, 5, 6, 7, 8, 9, 10, 11, 12, 13, 14, 15, 16, 17, 18, 19, 20, 21, 22, 23, 24, 25, 26	M12 x 1.75P, 1/2" - 12	8.00
04922	NT40 x ER40 x 23PCS	4, 5, 6, 7, 8, 9, 10, 11, 12, 13, 14, 15, 16, 17, 18, 19, 20, 21, 22, 23, 24, 25, 26	M16 x 2.0P, 5/8" - 11	8.45
04923	NT50 x ER40 x 23PCS	4, 5, 6, 7, 8, 9, 10, 11, 12, 13, 14, 15, 16, 17, 18, 19, 20, 21, 22, 23, 24, 25, 26	M24 x 3.0P, 1" - 8	11.25
04925	NT40 x ER50 x 17PCS	6, 7, 8, 9, 10, 12, 14, 16, 18, 20, 22, 24, 26, 28, 30, 32, 34	M16 x 2.0P, 5/8" - 11	9.15
04926	NT50 x ER50 x 17PCS	6, 7, 8, 9, 10, 12, 14, 16, 18, 20, 22, 24, 26, 28, 30, 32, 34	M24 x 3.0P, 1" - 8	11.95
04930	MTB3 x ER40 x 15PCS	4, 5, 6, 8, 10, 12, 13, 15, 16, 18, 20, 21, 23, 25, 26	M12 x 1.75P, 1/2" - 12	6.45
04931	MTB4 x ER40 x 15PCS	4, 5, 6, 8, 10, 12, 13, 15, 16, 18, 20, 21, 23, 25, 26	M16 x 2.0P, 5/8" - 11	6.45
04932	R8 x ER40 x 15PCS	4, 5, 6, 8, 10, 12, 13, 15, 16, 18, 20, 21, 23, 25, 26	7/16" - 20	6.30
04933	NT30 x ER40 x 15PCS	4, 5, 6, 8, 10, 12, 13, 15, 16, 18, 20, 21, 23, 25, 26	M12 x 1.75P, 1/2" - 12	6.00
04934	NT40 x ER40 x 15PCS	4, 5, 6, 8, 10, 12, 13, 15, 16, 18, 20, 21, 23, 25, 26	M16 x 2.0P, 5/8" - 11	6.45
04935	NT50 x ER40 x 15PCS	4, 5, 6, 8, 10, 12, 13, 15, 16, 18, 20, 21, 23, 25, 26	M24 x 3.0P, 1" - 8	9.25

**Product information:**

- ▶ Whole set=(ER Collet x Q'ty)+spanner+body+plastic box.
- ▶ Please inform Draw Bar's thread when making an order.



# STRAIGHT SHANK ER COLLET CHUCK SET

直柄 ER 夾頭組

[DIN ISO 15488]



MODEL NO.	TYPE	WEIGHT (KGS)	MODEL NO.	TYPE	WEIGHT (KGS)
05006	C16 x ER16A - 50 x 10PCS	1.40	05032	C25 x ER40 - 50 x 7PCS	5.35
05007	C16 x ER16A - 100 x 10PCS	1.48	05033	C25 x ER40 - 50 x 23PCS	9.35
05008	C16 x ER16A - 150 x 10PCS	1.56	05034	C32 x ER32 - 60 x 6PCS	3.25
05010	C20 x ER16A - 50 x 10PCS	1.50	05035	C32 x ER32 - 60 x 18PCS	4.45
05011	C20 x ER16A - 100 x 10PCS	1.60	05036	C32 x ER40 - 50 x 7PCS	5.48
05012	C20 x ER16A - 150 x 10PCS	1.70	05037	C32 x ER40 - 50 x 23PCS	9.48
05014	C20 x ER20A - 60 x 12PCS	1.71	05054	5/8" x ER11A - 140 x 13PCS	1.36
05015	C20 x ER20A - 120 x 12PCS	1.76	05039	5/8" x ER16A - 60 x 10PCS	1.42
05016	C20 x ER20A - 180 x 12PCS	1.88	05040	3/4" x ER16A - 50 x 10PCS	1.50
05018	C20 x ER25 - 50 x 15PCS	2.42	05041	3/4" x ER16A - 100 x 10PCS	1.60
05019	C20 x ER25 - 100 x 15PCS	2.55	05056	3/4" x ER16A - 140 x 10PCS	1.55
05021	C20 x ER32 - 50 x 6PCS	2.42	05058	1" x ER20A - 140 x 12 PCS	1.98
05022	C20 x ER32 - 100 x 6PCS	2.52	05042	1" x ER25 - 50 x 15PCS	2.85
05024	C20 x ER32 - 50 x 18PCS	3.62	05043	1" x ER32 - 50 x 6PCS	3.00
05025	C20 x ER32 - 100 x 18PCS	3.72	05044	1" x ER32 - 50 x 18PCS	4.20
05027	C25 x ER25 - 50 x 15PCS	3.10	05045	1" x ER40 - 50 x 7PCS	5.35
05028	C25 x ER25 - 100 x 15PCS	3.23	05046	1" x ER40 - 50 x 23PCS	9.35
05030	C25 x ER32 - 50 x 6PCS	3.00	05047	1-1/4" x ER32 - 60 x 6PCS	3.15
05031	C25 x ER32 - 50 x 18PCS	4.20	05048	1-1/4" x ER32 - 60 x 18PCS	4.35

## STRAIGHT SHANK ER TAPPER (FOR CNC LATHE)

MODEL NO.	TYPE	COLLET / mm	TYPPER	WEIGHT (KGS)
05210	TP20 x 7PCS / SET	4, 5, 6, 7, 9, 12, 13	M3 ~ M16	1.22
05220	TP32 x 10PCS / SET	4, 5, 6, 7, 9, 12, 13, 15, 19, 20	M3 ~ M27	3.90
05230	TPM320 x 7PCS / SET	4, 5, 6, 7, 9, 12, 13 mm	M3 ~ M16	1.50
05240	TPM420 x 7PCS / SET	4, 5, 6, 7, 9, 12, 13	M3 ~ M16	1.70
05250	TPM432 x 10PCS / SET	4, 5, 6, 7, 9, 12, 13, 15, 19, 20	M3 ~ M27	4.10

### Product information:

- ▶ Whole set=(ER Collet x Q'ty)+spanner+body+plastic box.
- ▶ It is acceptable to order a set for the sizes selected by request.

# MILLING CHUCK SET

## 銑床夾頭組



MODEL NO.	TYPE	DRAW BAR		COLLET SET	WEIGHT (KGS)
83802	MTB2 x EOC25 x 7M x SYOZ	3/8" - 16	M10 x 1.5P	6, 8, 10, 12, 16, 20, 25mm	3.40
83803	MTB3 x EOC25 x 7M x SYOZ	1/2" - 12	M12 x 1.75P	6, 8, 10, 12, 16, 20, 25mm	3.80
83804	MTB4 x EOC25 x 7M x SYOZ	5/8" - 11	M16 x 2.0P	6, 8, 10, 12, 16, 20, 25mm	4.00
83808	R8 x EOC25 x 7M x SYOZ	7/16" - 20		6, 8, 10, 12, 16, 20, 25mm	3.70
83830	NT30 x EOC25 x 7M x SYOZ	1/2" - 12	M12 x 1.75P	6, 8, 10, 12, 16, 20, 25mm	3.50
83840	NT40 x EOC25 x 7M x SYOZ	5/8" - 11	M16 x 2.0P	6, 8, 10, 12, 16, 20, 25mm	3.80
83850	NT50 x EOC25 x 7M x SYOZ	1" - 8	M24 x 3.0P	6, 8, 10, 12, 16, 20, 25mm	6.20
83812	MTB2 x EOC25 x 7I x SYOZ	3/8" - 16	M10 x 1.5P	1/4", 5/16", 3/8", 1/2", 5/8", 3/4", 1"	3.50
83813	MTB3 x EOC25 x 7I x SYOZ	1/2" - 12	M12 x 1.75P	1/4", 5/16", 3/8", 1/2", 5/8", 3/4", 1"	3.55
83814	MTB4 x EOC25 x 7I x SYOZ	5/8" - 11	M16 x 2.0P	1/4", 5/16", 3/8", 1/2", 5/8", 3/4", 1"	3.70
83818	R8 x EOC25 x 7I x SYOZ	7/16" - 20		1/4", 5/16", 3/8", 1/2", 5/8", 3/4", 1"	3.90
83831	NT30 x EOC25 x 7I x SYOZ	1/2" - 12 M12 x 1.75P	U. S. A. 1/2" - 13	1/4", 5/16", 3/8", 1/2", 5/8", 3/4", 1"	3.60
83841	NT40 x EOC25 x 7I x SYOZ	5/8" - 11	M16 x 2.0P	1/4", 5/16", 3/8", 1/2", 5/8", 3/4", 1"	4.00
83849	NT50 x EOC25 x 7I x SYOZ	1" - 8	M24 x 3.0P	1/4", 5/16", 3/8", 1/2", 5/8", 3/4", 1"	6.80
83851	MTB2 x EOC25 x 15M x SYOZ	3/8" - 16	M10 x 1.5P	3, 4, 5, 6, 7, 8, 9, 10, 11, 12, 13, 16, 18, 20, 25mm	4.90
83852	MTB3 x EOC25 x 15M x SYOZ	1/2" - 12	M12 x 1.75P	3, 4, 5, 6, 7, 8, 9, 10, 11, 12, 13, 16, 18, 20, 25mm	5.20
83853	MTB4 x EOC25 x 15M x SYOZ	5/8" - 11	M16 x 2.0P	3, 4, 5, 6, 7, 8, 9, 10, 11, 12, 13, 16, 18, 20, 25mm	5.70
83854	R8 x EOC25 x 15M x SYOZ	7/16" - 20		3, 4, 5, 6, 7, 8, 9, 10, 11, 12, 13, 16, 18, 20, 25mm	5.30
83855	NT30 x EOC25 x 15M x SYOZ	1/2" - 12	M12 x 1.75P	3, 4, 5, 6, 7, 8, 9, 10, 11, 12, 13, 16, 18, 20, 25mm	5.00
83856	NT40 x EOC25 x 15M x SYOZ	5/8" - 11	M16 x 2.0P	3, 4, 5, 6, 7, 8, 9, 10, 11, 12, 13, 16, 18, 20, 25mm	5.40
83857	NT50 x EOC25 x 15M x SYOZ	1" - 8 or	M24 x 3.0P	3, 4, 5, 6, 7, 8, 9, 10, 11, 12, 13, 16, 18, 20, 25mm	7.60
83871	MTB2 x EOC25 x 15I x SYOZ	3/8" - 16	M10 x 1.5P	1/8", 3/16", 1/4", 5/16", 3/8", 7/16", 1/2", 9/16", 5/8", 11/16", 3/4", 13/16", 7/8", 15/16", 1"	4.90
83872	MTB3 x EOC25 x 15I x SYOZ	1/2" - 12	M12 x 1.75P	1/8", 3/16", 1/4", 5/16", 3/8", 7/16", 1/2", 9/16", 5/8", 11/16", 3/4", 13/16", 7/8", 15/16", 1"	5.20
83873	MTB4 x EOC25 x 15I x SYOZ	5/8" - 11	M16 x 2.0P	1/8", 3/16", 1/4", 5/16", 3/8", 7/16", 1/2", 9/16", 5/8", 11/16", 3/4", 13/16", 7/8", 15/16", 1"	5.70
83874	R8 x EOC25 x 15I x SYOZ	7/16" - 20		1/8", 3/16", 1/4", 5/16", 3/8", 7/16", 1/2", 9/16", 5/8", 11/16", 3/4", 13/16", 7/8", 15/16", 1"	5.30
83875	NT30 x EOC25 x 15I x SYOZ	1/2" - 12 M12 x 1.75P	U. S. A. 1/2" - 13	1/8", 3/16", 1/4", 5/16", 3/8", 7/16", 1/2", 9/16", 5/8", 11/16", 3/4", 13/16", 7/8", 15/16", 1"	5.00
83876	NT40 x EOC25 x 15I x SYOZ	5/8" - 11	M16 x 2.0P	1/8", 3/16", 1/4", 5/16", 3/8", 7/16", 1/2", 9/16", 5/8", 11/16", 3/4", 13/16", 7/8", 15/16", 1"	5.40
83877	NT50 x EOC25 x 15I x SYOZ	1" - 8	M24 x 3.0P	1/8", 3/16", 1/4", 5/16", 3/8", 7/16", 1/2", 9/16", 5/8", 11/16", 3/4", 13/16", 7/8", 15/16", 1"	7.60

### Product information:

- ▶ Complete sets use SYOZ collet. ▶ Packed with plastic box, Wooden box package is different price.
- ▶ Please indicate the collet chuck measurements in inch or metric system and 7pcs/set or 15pcs/set.
- ▶ Please specify the draw bar's size when making an order. ▶ NT50 packed by wooden box.
- ▶ Concentric end mill extending 25mm with concentricity at 0.02mm.
- ▶ Interior device with upper contracting to keep cutter never be shrunk.
- ▶ Enclosed one Spanner and Plastic case or wooden case for every set. ▶ The body Screw is Ground.



# EOC 32 MILLING CHUCK SET

EOC32 銑床夾頭組

[DIN ISO 10897]



## 8 PCS OR 16 PCS/SET EOC32 MILLING CHUCK / MM SIZE

MODEL NO.	TYPE	DRAW BAR		COLLET SET	WEIGHT (KGS)
83924	MTB4 x EOC32 x 8M x B	5/8" - 11	M16 x 2.0P	6, 8, 10, 12, 16, 20, 25, 32	6.50
83926	MTB5 x EOC32 x 8M x B	1" - 8	M24 x 3.0P	6, 8, 10, 12, 16, 20, 25, 32	9.07
83930	NT40 x EOC32 x 8M x B	5/8" - 11	M16 x 2.0P	6, 8, 10, 12, 16, 20, 25, 32	6.50
83932	NT50 x EOC32 x 8M x B	1" - 8	M24 x 3.0P	6, 8, 10, 12, 16, 20, 25, 32	9.45
83944	MTB4 x EOC32 x 16M x B	5/8" - 11	M16 x 2.0P	5, 6, 7, 8, 9, 10, 11, 12, 13, 14, 15, 16, 18, 20, 25, 32	10.70
83946	MTB5 x EOC32 x 16M x B	1" - 8	M24 x 3.0P	5, 6, 7, 8, 9, 10, 11, 12, 13, 14, 15, 16, 18, 20, 25, 32	12.27
83950	NT40 x EOC32 x 16M x B	5/8" - 11	M16 x 2.0P	5, 6, 7, 8, 9, 10, 11, 12, 13, 14, 15, 16, 18, 20, 25, 32	10.80
83952	NT50 x EOC32 x 16M x B	1" - 8	M24 x 3.0P	5, 6, 7, 8, 9, 10, 11, 12, 13, 14, 15, 16, 18, 20, 25, 32	12.65

## 8 PCS/SET EOC32 MILLING CHUCK / INCHES

83964	MTB4 x EOC32 x 8I x B	5/8" W11	1/4", 5/16", 3/8", 1/2", 5/8", 3/4", 1", 1-1/4"	6.50
83966	MTB5 x EOC32 x 8I x B	1" W8	1/4", 5/16", 3/8", 1/2", 5/8", 3/4", 1", 1-1/4"	9.07
83970	NT40 x EOC32 x 8I x B	5/8" W11	1/4", 5/16", 3/8", 1/2", 5/8", 3/4", 1", 1-1/4"	6.50
83972	NT50 x EOC32 x 8I x B	1" W8	1/4", 5/16", 3/8", 1/2", 5/8", 3/4", 1", 1-1/4"	9.45

### Product information:

- ▶ Please specify the draw bar's size when making an order.
- ▶ Complete set packaged by plastic box, but NT50 by wooden box.
- ▶ Set: includes body + (collet x Q'ty) + spanner + packing box.
- ▶ Max. clamping capacity: 32mm or 1-1/4".
- ▶ COLLET TYPE: EOC 32 - B.



# TG 100 MILLING CHUCK SET

TG 100 銑床夾頭組



MODEL NO.	TYPE	DRAW BAR		COLLET	WEIGHT (KGS)
84072	MTB3 x TG100 x 7M	1/2" - 12	M12 x 1.75P	6, 8, 10, 12, 16, 20,25	3.95
84073	MTB4 x TG100 x 7M	5/8" - 11	M16 x 2.0P	6, 8, 10, 12, 16, 20,25	4.10
84074	R8 x TG100 x 7M	7/16" - 20		6, 8, 10, 12, 16, 20,25	4.30
84075	NT30 x TG100 x 7M	1/2" - 12	M12 x 1.75P	6, 8, 10, 12, 16, 20,25	4.00
84076	NT40 x TG100 x 7M	5/8" - 11	M16 x 2.0P	6, 8, 10, 12, 16, 20,25	4.40
84077	NT50 x TG100 x 7M	1" - 8	M24 x 3.0P	6, 8, 10, 12, 16, 20,25	6.80
84079	MTB3 x TG100 x 7I	1/2" - 12	M12 x 1.75P	1/4", 5/16", 3/8", 1/2", 5/8", 3/4", 1"	3.95
84080	MTB4 x TG100 x 7I	5/8" - 11	M16 x 2.0P	1/4", 5/16", 3/8", 1/2", 5/8", 3/4", 1"	4.10
84081	R8 x TG100 x 7I	7/16" - 20		1/4", 5/16", 3/8", 1/2", 5/8", 3/4", 1"	4.30
84082	NT30 x TG100 x 7I	1/2" - 12	M12 x 1.75P	1/4", 5/16", 3/8", 1/2", 5/8", 3/4", 1"	4.00
84083	NT40 x TG100 x 7I	5/8" - 11	M16 x 2.0P	1/4", 5/16", 3/8", 1/2", 5/8", 3/4", 1"	4.40
84084	NT50 x TG100 x 7I	1" - 8	M24 x 3.0P	1/4", 5/16", 3/8", 1/2", 5/8", 3/4", 1"	6.80
84086	MTB3 x TG100 x 15M	1/2" - 12	M12 x 1.75P	3, 4, 5, 6, 7, 8, 9, 10, 11, 12, 13, 16, 18, 20, 25	5.75
84087	MTB4 x TG100 x 15M	5/8" - 11	M16 x 2.0P	3, 4, 5, 6, 7, 8, 9, 10, 11, 12, 13, 16, 18, 20, 25	5.90
84088	R8 x TG100 x 15M	7/16" - 20		3, 4, 5, 6, 7, 8, 9, 10, 11, 12, 13, 16, 18, 20, 25	6.10
84089	NT30 x TG100 x 15M	1/2" - 12	M12 x 1.75P	3, 4, 5, 6, 7, 8, 9, 10, 11, 12, 13, 16, 18, 20, 25	5.80
84090	NT40 x TG100 x 15M	5/8" - 11	M16 x 2.0P	3, 4, 5, 6, 7, 8, 9, 10, 11, 12, 13, 16, 18, 20, 25	6.20
84091	NT50 x TG100 x 15M	1" - 8	M24 x 3.0P	3, 4, 5, 6, 7, 8, 9, 10, 11, 12, 13, 16, 18, 20, 25	9.00
84093	MTB3 x TG100 x 15I	1/2" - 12	M12 x 1.75P	1/8", 3/16", 1/4", 5/16", 3/8", 7/16", 1/2", 9/16", 5/8", 11/16", 3/4", 13/16", 7/8", 15/16", 1"	5.75
84094	MTB4 x TG100 x 15I	5/8" - 11	M16 x 2.0P	1/8", 3/16", 1/4", 5/16", 3/8", 7/16", 1/2", 9/16", 5/8", 11/16", 3/4", 13/16", 7/8", 15/16", 1"	5.90
84095	R8 x TG100 x 15I	7/16" - 20		1/8", 3/16", 1/4", 5/16", 3/8", 7/16", 1/2", 9/16", 5/8", 11/16", 3/4", 13/16", 7/8", 15/16", 1"	6.10
84096	NT30 x TG100 x 15I	1/2" - 12	M12 x 1.75P	1/8", 3/16", 1/4", 5/16", 3/8", 7/16", 1/2", 9/16", 5/8", 11/16", 3/4", 13/16", 7/8", 15/16", 1"	5.80
84097	NT40 x TG100 x 15I	5/8" - 11	M16 x 2.0P	1/8", 3/16", 1/4", 5/16", 3/8", 7/16", 1/2", 9/16", 5/8", 11/16", 3/4", 13/16", 7/8", 15/16", 1"	6.20
84098	NT50 x TG100 x 15I	1" - 8	M24 x 3.0P	1/8", 3/16", 1/4", 5/16", 3/8", 7/16", 1/2", 9/16", 5/8", 11/16", 3/4", 13/16", 7/8", 15/16", 1"	9.00

**Product information:**

- ▶ Please inform if the collet chuck measurements are in inch or metric system and 7 pcs/set or 15 pcs/set.
- ▶ Please inform the draw bar's size when making an order.
- ▶ Concentric end mill extending 25mm with concentricity at 0.01mm.
- ▶ T thread of nut and TG collet make cutting tools be clamped tightly.
- ▶ Enclosed one Spanner, Shank, wooden box and full set collets.
- ▶ The body Screw is ground.



# SKS.SBL.MLD COLLET CHUCK FULL SET

## SKS/SBL/MLD 銑床夾頭組



MODEL NO.	TYPE	COLLET SIZE / mm	MODEL NO.	TYPE	COLLET SIZE / mm
18338-6P	BT40 x SKS6 x 6PCS	3.5, 4, 4.5, 5, 5.5, 6	18866-4P	BT40 x SBL6 x 4PCS	3, 4, 5, 6
18340-6P	BT40 x SKS10 x 6PCS	3.5, 4, 5, 6, 8, 10	18870-6P	BT40 x SBL12 x 6PCS	3, 5, 6, 8, 10, 12
18343-6P	BT40 x SKS13 x 6PCS	3.5, 5, 6, 8, 10, 12	18874-6P	BT40 x SBL20 x 6PCS	3, 6, 8, 10, 12, 20
18344-6P	BT40 x SKS16 x 6PCS	3.5, 6, 8, 10, 12, 16	18877-6P	BT40 x SBL25 x 6PCS	8, 10, 12, 16, 20, 25
18348-6P	BT40 x SKS20 x 6PCS	6, 8, 10, 12, 16, 20	23654-4P	CAT40 x SBL6 x 4PCS	3, 4, 5, 6
18352-6P	BT40 x SKS25 x 6PCS	8, 10, 12, 16, 20, 25	23660-6P	CAT40 x SBL12 x 6PCS	3, 5, 6, 8, 10, 12
23712-6P	CAT40 x SKS6 x 6PCS	3.5, 4, 4.5, 5, 5.5, 6	23666-6P	CAT40 x SBL20 x 6PCS	3, 6, 8, 10, 12, 20
23716-6P	CAT40 x SKS10 x 6PCS	3.5, 4, 5, 6, 8, 10	23671-6P	CAT40 x SBL25 x 6PCS	8, 10, 12, 16, 20, 25
23720-6P	CAT40 x SKS13 x 6PCS	3.5, 5, 6, 8, 10, 12	45368-4P	DAT40 x SBL6 x 4PCS	3, 4, 5, 6
23722-6P	CAT40 x SKS16 x 6PCS	3.5, 6, 8, 10, 12, 16	45372-6P	DAT40 x SBL12 x 6PCS	3, 5, 6, 8, 10, 12
23726-6P	CAT40 x SKS20 x 6PCS	6, 8, 10, 12, 16, 20	45376-6P	DAT40 x SBL20 x 6PCS	3, 6, 8, 10, 12, 20
23732-6P	CAT40 x SKS25 x 6PCS	8, 10, 12, 16, 20, 25	45379-6P	DAT40 x SBL25 x 6PCS	8, 10, 12, 16, 20, 25
43010-6P	DAT40 x SKS6 x 6PCS	3.5, 4, 4.5, 5, 5.5, 6	15902G-5P	BT30 x MLD20 - 80 x 5PCS	3, 6, 8, 10, 12
43012-6P	DAT40 x SKS10 x 6PCS	3.5, 4, 5, 6, 8, 10	15922G-7P	BT40 x MLD32 - 95 x 7PCS	6, 8, 10, 12, 16, 20
43015-6P	DAT40 x SKS13 x 6PCS	3.5, 5, 6, 8, 10, 12	15936G-105-7P	BT50 x MLD32 - 105 x 7PCS	6, 8, 10, 12, 16, 20
43016-6P	DAT40 x SKS16 x 6PCS	3.5, 6, 8, 10, 12, 16	15940G-8P	BT50 x MLD42 - 105 x 8PCS	6, 8, 10, 12, 16, 20, 25, 32
43020-6P	DAT40 x SKS20 x 6PCS	6, 8, 10, 12, 16, 20			
43026-6P	DAT40 x SKS25 x 6PCS	8, 10, 12, 16, 20, 25			

### Product information:

► Set: includes body + (collet x Q'ty) + spanner + packing box.



# BALANCE STANDARD FORMULA LIST

Balance Grade		G0.4	G1	G2.5	G6.3	G16	G40	G100	G250	G630	G1600	G4000
Precision Required	exw (mm/s)	0.4	1	2.5	6.3	16	40	100	250	630	1600	4000
Precision Required	exw (µm *rpm)	3820	9549	23875	60165	152800	382000	954900	2387500	6016500	15280000	38200000

SETTING OF THE BALANCE SERIES IS ACCORDING TO ISO 1940 STANDARD .

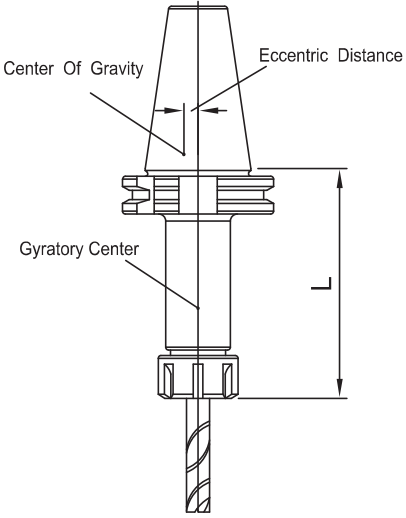
THE FORMULA AS FOLLOWS:

$$U = M \times e$$

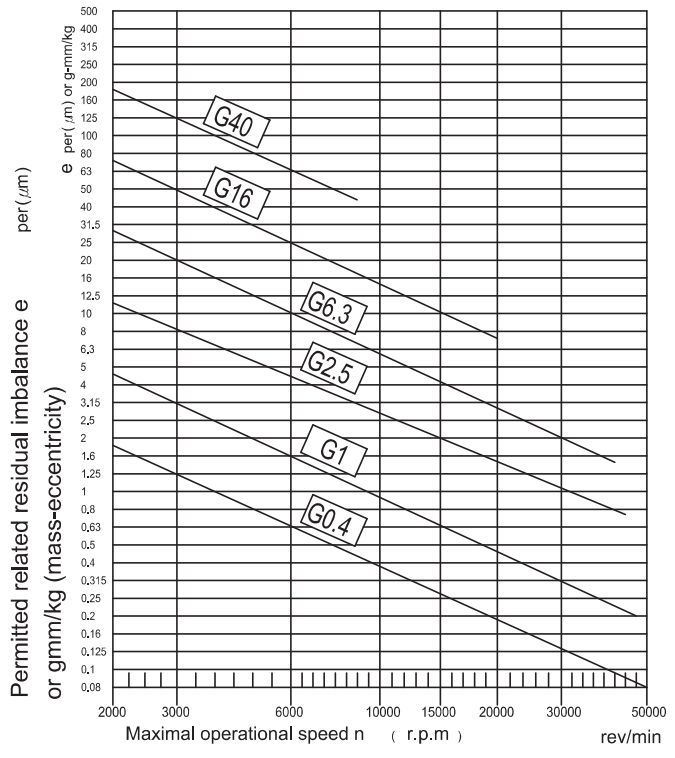
$$U = \frac{G \times M}{n} \times 9549$$

$$G = \frac{n \times U}{9549 \times M}$$

**G = UNBALANCE SERIES**  
**U = UNBALANCE (g-mm)**  
**e = ECCENTRIC DISTANCE (mm)**  
**M = ROTER WEIGHT (kg)**  
**n = rpm**  
**9549 = CONSTANT**



Quality levels according to ISO 1940 and permitted residual imbalance or speed



# REFERENCE DETAILS

µm

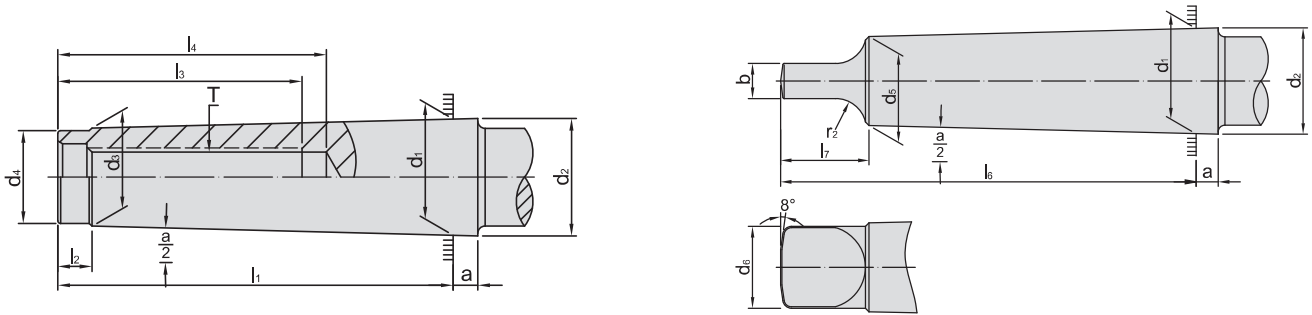
mm		H																	
		1	2	3	4	5	6	7	8	9	10	11	12	13	14 <sup>1)</sup>	15 <sup>1)</sup>	16 <sup>1)</sup>	17 <sup>1)</sup>	18 <sup>1)</sup>
Over	Under	µm											mm						
-	3 <sup>1)</sup>	+0.8 0	+1.2 0	+2 0	+3 0	+4 0	+6 0	+10 0	+14 0	+25 0	+40 0	+60 0	+0.1 0	+0.14 0	+0.25 0	+0.4 0	+0.6 0		
3	6	+1 0	+1.5 0	+2.5 0	+4 0	+5 0	+8 0	+12 0	+18 0	+30 0	+48 0	+75 0	+0.12 0	+0.18 0	+0.3 0	+0.48 0	+0.75 0	+1.2 0	+1.8 0
6	10	+1 0	+1.5 0	+2.5 0	+4 0	+6 0	+9 0	+15 0	+22 0	+36 0	+58 0	+90 0	+0.15 0	+0.22 0	+0.36 0	+0.58 0	+0.9 0	+1.5 0	+2.2 0
10	18	+1.2 0	+2 0	+3 0	+5 0	+8 0	+11 0	+18 0	+27 0	+43 0	+70 0	+110 0	+0.18 0	+0.27 0	+0.43 0	+0.7 0	+1.1 0	+1.8 0	+2.7 0
18	30	+1.5 0	+2.5 0	+4 0	+6 0	+9 0	+13 0	+21 0	+33 0	+52 0	+84 0	+130 0	+0.21 0	+0.33 0	+0.52 0	+0.84 0	+1.3 0	+2.1 0	+3.3 0
30	50	+1.5 0	+2.5 0	+4 0	+7 0	+11 0	+16 0	+25 0	+39 0	+62 0	+100 0	+160 0	+0.25 0	+0.39 0	+0.62 0	+1 0	+1.6 0	+2.5 0	+3.9 0
50	80	+2 0	+3 0	+5 0	+8 0	+13 0	+19 0	+30 0	+46 0	+74 0	+120 0	+190 0	+0.3 0	+0.46 0	+0.74 0	+1.2 0	+1.9 0	+3 0	+4.6 0
80	120	+2.5 0	+4 0	+6 0	+10 0	+15 0	+22 0	+35 0	+54 0	+87 0	+140 0	+220 0	+0.35 0	+0.54 0	+0.87 0	+1.4 0	+2.2 0	+3.5 0	+5.4 0
120	180	+3.5 0	+5 0	+8 0	+12 0	+18 0	+25 0	+40 0	+63 0	+100 0	+160 0	+250 0	+0.4 0	+0.63 0	+1 0	+1.6 0	+2.5 0	+4 0	+6.3 0
180	250	+4.5 0	+7 0	+10 0	+14 0	+20 0	+29 0	+46 0	+72 0	+115 0	+185 0	+290 0	+0.46 0	+0.72 0	+1.15 0	+1.85 0	+2.9 0	+4.6 0	+7.2 0
250	315	+6 0	+8 0	+12 0	+16 0	+23 0	+32 0	+52 0	+81 0	+130 0	+210 0	+320 0	+0.52 0	+0.81 0	+1.3 0	+2.1 0	+3.2 0	+5.2 0	+8.1 0
315	400	+7 0	+9 0	+13 0	+18 0	+25 0	+36 0	+57 0	+89 0	+140 0	+230 0	+360 0	+0.57 0	+0.89 0	+1.4 0	+2.3 0	+3.6 0	+5.7 0	+8.9 0
400	500	+8 0	+10 0	+15 0	+20 0	+27 0	+40 0	+63 0	+97 0	+155 0	+250 0	+400 0	+0.63 0	+0.97 0	+1.55 0	+2.5 0	+4 0	+6.3 0	+9.7 0

mm		h																	
		1	2	3	4	5	6	7	8	9	10	11	12	13	14 <sup>1)</sup>	15 <sup>1)</sup>	16 <sup>1)</sup>	17	18
Over	Under	µm											mm						
-	3 <sup>1)</sup>	0 -0.8	0 -1.2	0 -2	0 -3	0 -4	0 -6	0 -10	0 -14	0 -25	0 -40	0 -60	0 -0.1	0 -0.14	0 -0.25	0 -0.4	0 -0.6		
3	6	0 -1	0 -1.5	0 -2.5	0 -4	0 -5	0 -8	0 -12	0 -18	0 -30	0 -48	0 -75	0 -0.12	0 -0.18	0 -0.3	0 -0.48	0 -0.75	0 -1.2	0 -1.8
6	10	0 -1	0 -1.5	0 -2.5	0 -4	0 -6	0 -9	0 -15	0 -22	0 -36	0 -58	0 -90	0 -0.15	0 -0.22	0 -0.36	0 -0.58	0 -0.9	0 -1.5	0 -2.2
10	18	0 -1.2	0 -2	0 -3	0 -5	0 -8	0 -11	0 -18	0 -27	0 -43	0 -70	0 -110	0 -0.18	0 -0.27	0 -0.43	0 -0.7	0 -1.1	0 -1.8	0 -2.7
18	30	0 -1.5	0 -2.5	0 -4	0 -6	0 -9	0 -13	0 -21	0 -33	0 -52	0 -84	0 -130	0 -0.21	0 -0.33	0 -0.52	0 -0.84	0 -1.3	0 -2.1	0 -3.3
30	50	0 -1.5	0 -2.5	0 -4	0 -7	0 -11	0 -16	0 -25	0 -39	0 -62	0 -100	0 -160	0 -0.25	0 -0.39	0 -0.62	0 -1	0 -1.6	0 -2.5	0 -3.9
50	80	0 -2	0 -3	0 -5	0 -8	0 -13	0 -19	0 -30	0 -46	0 -74	0 -120	0 -190	0 -0.3	0 -0.46	0 -0.74	0 -1.2	0 -1.9	0 -3	0 -4.6
80	120	0 -2.5	0 -4	0 -6	0 -10	0 -15	0 -22	0 -35	0 -54	0 -87	0 -140	0 -220	0 -0.35	0 -0.54	0 -0.87	0 -1.4	0 -2.2	0 -3.5	0 -5.4
120	180	0 -3.5	0 -5	0 -8	0 -12	0 -18	0 -25	0 -40	0 -63	0 -100	0 -160	0 -250	0 -0.4	0 -0.63	0 -1	0 -1.6	0 -2.5	0 -4	0 -6.3
180	250	0 -4.5	0 -7	0 -10	0 -14	0 -20	0 -29	0 -46	0 -72	0 -115	0 -185	0 -290	0 -0.46	0 -0.72	0 -1.15	0 -1.85	0 -2.9	0 -4.6	0 -7.2
250	315	0 -6	0 -8	0 -12	0 -16	0 -23	0 -32	0 -52	0 -81	0 -130	0 -210	0 -320	0 -0.52	0 -0.81	0 -1.3	0 -2.1	0 -3.2	0 -5.2	0 -8.1
315	400	0 -7	0 -9	0 -13	0 -18	0 -25	0 -36	0 -57	0 -89	0 -140	0 -230	0 -360	0 -0.57	0 -0.89	0 -1.4	0 -2.3	0 -3.6	0 -5.7	0 -8.9
400	500	0 -8	0 -10	0 -15	0 -20	0 -27	0 -40	0 -63	0 -97	0 -155	0 -250	0 -400	0 -0.63	0 -0.97	0 -1.55	0 -2.5	0 -4	0 -6.3	0 -9.7



# REFERENCE DETAILS

## 參考資料



### DIN 228 FORM A <Drawing Thread Type>

M.T.NO.	a	d <sub>1</sub>	d <sub>2</sub>	d <sub>3</sub>	d <sub>4</sub> max.	T	l <sub>1</sub> max.	l <sub>2</sub>	l <sub>3</sub> min.	l <sub>4</sub> min.
2	5	17.78	18	14.6	14	3/8" 16W, M10 x 1.5P	64	5	24	31.5
3	5	23.825	24.1	19.8	19	1/2" 12W, M12 x 1.75P	81	7	24	33.5
4	6.5	31.267	31.6	25.9	25	5/8" 11W, M16 x 2.0P	102.5	9	32	42.5
5	6.5	44.399	44.7	37.6	35.7	1" 8W, M24 x 3.0P	129.5	10	40	52.5
6	8	63.348	63.8	53.9	51	1" 8W, M24 x 3.0P	182	16	47	61.5

### DIN 228 FORM B <Tongue Type>

M.T.NO.	a	b h13	d <sub>5</sub>	d <sub>6</sub> max.	l <sub>6</sub> 0 -1	l <sub>7</sub> max.	r <sub>2</sub>	$\frac{\alpha}{2}$
2	5	6.3	14	13.5	75	16	6	1°25' 50"
3	5	7.9	19.1	18.5	94	20	7	1°26' 16"
4	6.5	11.9	25.2	24.5	117.5	24	8	1°29' 15"
5	6.5	15.9	36.5	35.7	149.5	29	10	1°30' 26"
6	8	19	52.4	51	210	40	13	1°29' 36"

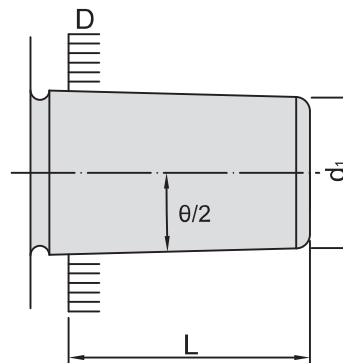
### JACOBS TAPER

TYPE	$\theta/2$ TAPER	D	d <sub>1</sub>	L
JT 2	2° 19'52"	14.199	12.386	22.225
JT33	1° 49'01"	15.850	14.237	25.400
JT 6	1° 29'10"	17.170	15.852	25.400
JT 3	1° 31'26"	20.599	18.951	30.956
JT 4	1° 29'59"	28.550	26.346	42.069
JT 5	1° 29'05"	35.890	33.422	47.625

### DIN 238

TYPE	$\theta/2$ TAPER	D	d <sub>1</sub>	L
B12	1° 25'43"	12.065	11.1	18.5
B16	1° 25'50"	15.733	14.5	24.0
B18	1° 25'50"	17.780	16.2	32.0

### DRILL CHUCK HOLE TAPER SPECIFICATION



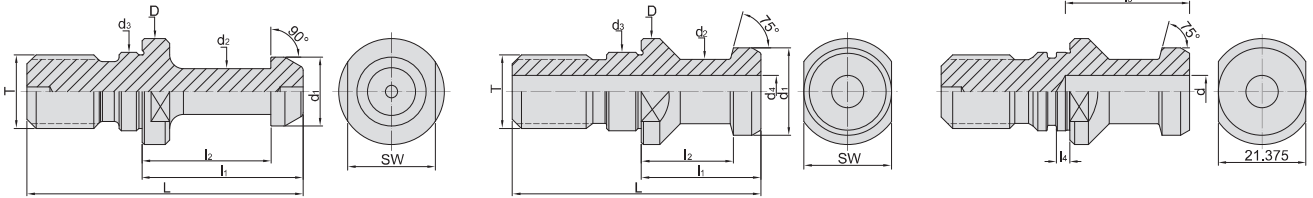
# REFERENCE DETAILS

## 參考資料

MAS BT

DIN 69872 - A

DIN 69872 - B



### MAS BT PULL STUDS SPECIFICATION

TYPE	D 0 -0.2	d <sub>1</sub> 0 -0.1	d <sub>2</sub> 0 -0.1	d <sub>3</sub> h7	L	l <sub>1</sub> 0 -0.1	l <sub>2</sub> 0 -0.1	θ ±15'	SW 0 -0.35	T 6h	
BT30 - 45°	16.5	11	7	12.5	43	23	18	45°	13	M12 x 1.75P	P30T - 1
BT40 - 45°	23	15	10	17	60	35	28	45°	19	M16 x 2.0P	P40T - 1
BT50 - 45°	38	23	17	25	85	45	35	45°	30	M24 x 3.0P	P50T - 1
BT30 - 60°	16.5	11	7	12.5	43	23	18	60°	13	M12 x 1.75P	P30T - 2
BT40 - 60°	23	15	10	17	60	35	28	60°	19	M16 x 2.0P	P40T - 2
BT50 - 60°	38	23	17	25	85	45	35	60°	30	M24 x 3.0P	P50T - 2

### DIN 69 872 A & B PULL STUDS SPECIFICATION

TYPE	D 0 -0.2	d <sub>1</sub> f7	d <sub>2</sub> 0 -0.1	d <sub>3</sub> f7	d <sub>4</sub> +0.1 0	L	l <sub>1</sub> ±0.1	l <sub>2</sub> ±0.1	l <sub>3</sub> +1 0	l <sub>4</sub> 0 -0.1	SW 0 -0.1	T
DAT30 - A	17	13	9	13	-	44	24	19	-	-	14	M12 x 1.75P
DAT40 - A	23	19	14	17	7	54	26	20	-	-	19	M16 x 2.0P
DAT50 - A	36	28	21	25	11.5	74	34	25	-	-	30	M24 x 3.0P
DAT30 - B	17	13	9	13	-	44	24	19	-	2.3	14	M12 x 1.75P
DAT40 - B	23	19	14	17	7	54	26	20	27	3.0	19	M16 x 2.0P
DAT50 - B	36	28	21	25	11.5	74	34	25	37	4.5	30	M24 x 3.0P

### DIN 1835 - B END MILL HOLDER SPECIFICATION

SIZE	d <sub>1</sub> H5	d <sub>2</sub> 0 -0.1	d <sub>3</sub> 6H	d <sub>4</sub> MIN	l <sub>3</sub> ±1	e <sub>3</sub> 0 -0.1	e <sub>4</sub> ±0.5	t <sub>1</sub>
6	6	25	M6	8	35	18	-	1
8	8	28	M8	10	35	18	-	1.3
10	10	35	M10	12	39	20	-	1.5
12	12	42	M12	14	44	22.5	-	1.6
16	16	48	M14	16	47	24	-	1.7
20	20	52	M16	18	49	25	-	2.1
25	25	65	M18	20	54	24	25	2.1
32	32	72	M20	22	58	24	28	2.2
40	40	90	M24	26	68	30	32	2.2

