

BT CATEGORY

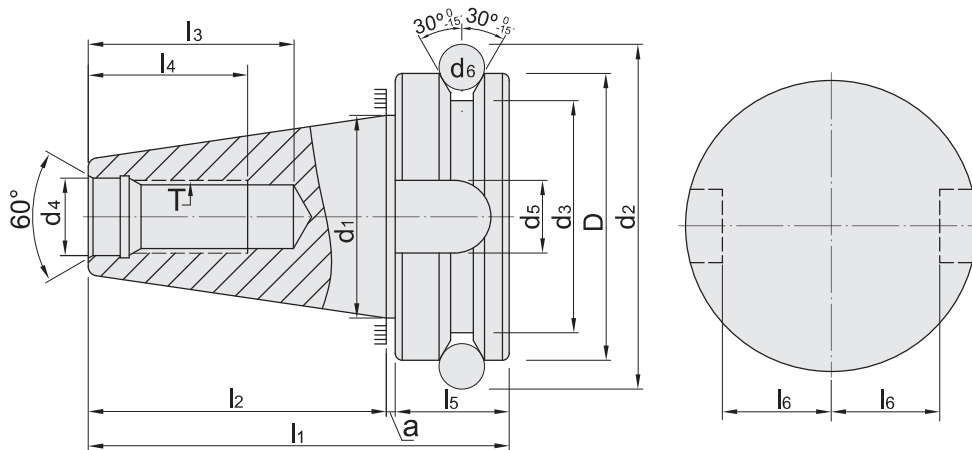
MAS 403

PNER COLLET CHUCK	A-3~4
PTER COLLET CHUCK	A-5~6
UT COLLET CHUCK	A-7~9
ER COLLET CHUCK	A-10~12
ER COLLET CHUCK [M TYPE]	A-13~14
SK3 COLLET CHUCK	A-15~16
SKS COLLET CHUCK	A-17~18
SBL SLIM-FIT COLLET CHUCK	A-19~20
SBLC SLIM-FIT COLLET CHUCK	A-21~22
MLD MULTI-LOCK MILLING CHUCK	A-23~25
EOC COLLET CHUCK	A-26
TG COLLET CHUCK	A-27
SLN SIDE LOCK END MILL HOLDER	A-28~30
SLN SIDE LOCK END MILL HOLDER [JIS TYPE]	A-31~32
FACE MILL ARBOR [FMA/FMB TYPE]	A-33~38
FACE MILL ARBOR [FMC TYPE]	A-39~40
SMA FACE MILL ARBOR	A-41
CSR COMBI SHELL END MILL ARBOR	A-42
SCA SIDE CUTTER ADAPTER	A-43~44
SPH DRILL CHUCK ADAPTER	A-45
SPU DRILL CHUCK ADAPTER	A-46
DRILL CHUCK ARBOR	A-47
QUICK CHANGE TAPPING CHUCK	A-48
TAPPING COLLET	A-49
ETP EXPANSION ER TAPPER	A-50
OSL SIDE LOCK OIL HOLE HOLDER	A-51
OTHER OIL HOLE COLLET CHUCK	A-52
SOM SCREWED END MILL HOLDER	A-53
MTA / MTB MORSE TAPER ADAPTER	A-54~55
ADAPTER	A-56
BLANK	A-57

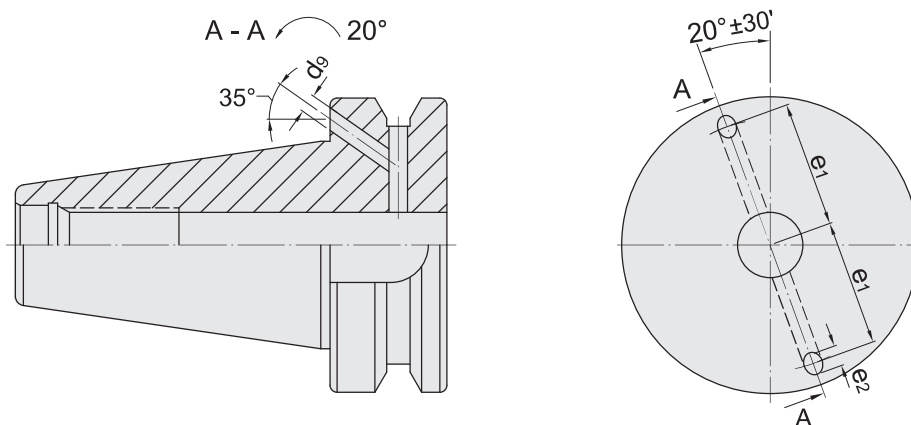
REFERENCE DETAILS

- ▶ Shank body standard : **JIS MAS 403**
- ▶ Taper tolerance < **AT3**
- ▶ Hardness > **HRC 56°**
- ▶ Surface roughness: Ra < **0.25 μm**
- ▶ Roundness < **0.8 μm**
- ▶ Carbon depth > **0.8mm**
- ▶ The shank has pre-balance at G6.3, and can provide precision balance at G2.5.
It can be ordered by request.

MAS403/BT A



MAS403/BT AD+B



BT	D _{h8}	d ₁	d ₂	d ₃	d ₄ _{H8}	d ₅ _{H12}	d ₆	d ₉ _{H12}	a _{±0.4}
30	46	31.75	56.14	38	12.5	16.1	8	-	2
40	63	44.45	75.679	53	17	16.1	10	4	2
50	100	69.85	119.02	85	25	25.7	15	6	3
BT	l ₁	l ₂ _{±0.2}	l ₃ _{min}	l ₄ _{min}	l ₅	l ₆ _{0 -0.2}	e ₁ _{±0.1}	e ₂ _{MAX}	T _{6H}
30	70.4	48.4	34	24	20	16.3	-	-	M12 x 1.75P
40	92.4	65.4	43	30	25	22.6	27	5	M16 x 2.0P
50	139.8	101.8	62	45	35	35.4	42	7	M24 x 3.0P

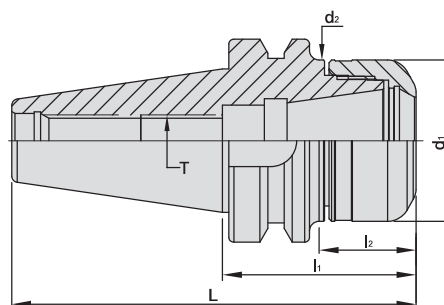
BT / PNER COLLET CHUCK



BT / PNER 立銑刀夾頭



T W PAT NO. M298033
 T W PAT NO. M311791
 T W PAT NO. M501316
 J P PAT NO. 3128766
 J P PAT NO. 3200356
 K R PAT NO. 20-0433603
 C N PAT NO. ZL200620132661.0
 C H PAT NO. 696550
 T R PAT NO. TR 2007 02942 Y
 I T PAT NO. N.0000266731
 D E PAT NO. Nr.202015005621



MODEL NO.	TYPE	L	l ₁	l ₂	d ₁	d ₂	T	SIZE RANGE	WEIGHT (KGS)
16704	BT30 x PNER16 - 50	98.4	50	25	30	30	M10 x 1.5P	3 ~ 10	0.80
16704 - 70	BT30 x PNER16 - 70	118.4	70	47	30	30	M10 x 1.5P	3 ~ 10	0.70
16706	BT30 x PNER20 - 60	108.4	60	37	32	32	M12 x 1.75P	3 ~ 13	0.80
16708	BT30 x PNER25 - 60	108.4	60	37	40	40	M16 x 2.0P	3 ~ 16	0.90
16710	BT30 x PNER32 - 60	108.4	60	33	50	50	-	3 ~ 20	1.00
16714	BT40 x PNER16 - 70	135.4	70	40	30	30	M10 x 1.5P	3 ~ 10	1.12
16714 - 130	BT40 x PNER16 - 130	195.4	130	93	30	30	M10 x 1.5P	3 ~ 10	1.36
16714 - 160	BT40 x PNER16 - 160	225.4	160	123	30	30	M10 x 1.5P	3 ~ 10	1.49
16716	BT40 x PNER20 - 70	135.4	70	40	32	32	M12 x 1.75P	3 ~ 13	1.14
16716 - 130	BT40 x PNER20 - 130	195.4	130	93	32	32	M12 x 1.75P	3 ~ 13	1.41
16716 - 160	BT40 x PNER20 - 160	225.4	160	123	32	32	M12 x 1.75P	3 ~ 13	1.56
16718	BT40 x PNER25 - 70	135.4	70	40	40	40	M16 x 2.0P	3 ~ 16	1.19
16718 - 130	BT40 x PNER25 - 130	195.4	130	98	40	40	M16 x 2.0P	3 ~ 16	1.66
16718 - 160	BT40 x PNER25 - 160	225.4	160	128	40	40	M16 x 2.0P	3 ~ 16	1.92
16720	BT40 x PNER32 - 70	135.4	70	40	50	50	M16 x 2.0P	3 ~ 20	1.20
16720 - 130	BT40 x PNER32 - 130	195.4	130	100	50	50	M16 x 2.0P	3 ~ 20	2.07
16720 - 160	BT40 x PNER32 - 160	225.4	160	130	50	50	M16 x 2.0P	3 ~ 20	2.49
16722	BT40 x PNER40 - 70	135.4	70	38	63	63	M20 x 2.0P	6 ~ 26	1.40

Product information:

- ▶ Balance: G2.5 25,000 rpm. Higher balancing grade and revolution can be done upon request but additional charge is needed.
- ▶ AD+B type is available, please inform us when making an order.
- ▶ MAS/BT30 tool holders are without coolant supply over collars.
- ▶ Use PN 3µm collet.

Standard Accessory: • NUT

Collet	Nut	Pull Stud	Preset Screw	Spanner
P.W-4	P.W-39	P.W-54~55	P.W-82	P.W-62~67



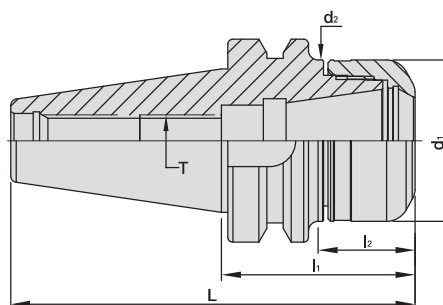
BT / PNER COLLET CHUCK



BT / PNER 立銑刀夾頭



T W PAT NO. M298033
 T W PAT NO. M311791
 T W PAT NO. M501316
 J P PAT NO. 3128766
 J P PAT NO. 3200356
 K R PAT NO. 20-0433603
 C N PAT NO. ZL200620132661.0
 C H PAT NO. 696550
 T R PAT NO. TR 2007 02942 Y
 I T PAT NO. N.0000266731
 D E PAT NO. Nr.202015005621



MODEL NO.	TYPE	L	l ₁	l ₂	d ₁	d ₂	T	SIZE RANGE	WEIGHT (KGS)
16728	BT50 x PNER16 - 70	171.8	70	29	30	30	M10 x 1.5P	3 ~ 10	3.00
16728 - 130	BT50 x PNER16 - 130	231.8	130	82	30	30	M10 x 1.5P	3 ~ 10	3.88
16728 - 160	BT50 x PNER16 - 160	261.8	160	112	30	30	M10 x 1.5P	3 ~ 10	4.01
16730	BT50 x PNER20 - 70	171.8	70	29	32	32	M12 x 1.75P	3 ~ 13	3.00
16730 - 130	BT50 x PNER20 - 130	231.8	130	82	32	32	M12 x 1.75P	3 ~ 13	3.91
16730 - 160	BT50 x PNER20 - 160	261.8	160	112	32	32	M12 x 1.75P	3 ~ 13	4.06
16732	BT50 x PNER25 - 70	171.8	70	29	40	40	M16 x 2.0P	3 ~ 16	3.93
16732 - 130	BT50 x PNER25 - 130	231.8	130	82	40	40	M16 x 2.0P	3 ~ 16	4.06
16732 - 160	BT50 x PNER25 - 160	261.8	160	112	40	40	M16 x 2.0P	3 ~ 16	4.27
16734	BT50 x PNER32 - 70	171.8	70	31	50	50	M16 x 2.0P	3 ~ 20	4.12
16734 - 130	BT50 x PNER32 - 130	231.8	130	82	50	50	M16 x 2.0P	3 ~ 20	4.43
16734 - 160	BT50 x PNER32 - 160	261.8	160	112	50	50	M16 x 2.0P	3 ~ 20	4.80
16736	BT50 x PNER40 - 80	181.8	80	39	63	63	M20 x 2.0P	6 ~ 26	4.20
16736 - 130	BT50 x PNER40 - 130	231.8	130	82	63	63	M20 x 2.0P	6 ~ 26	4.97
16736 - 160	BT50 x PNER40 - 160	261.8	160	112	63	63	M20 x 2.0P	6 ~ 26	5.61

Product information:

- ▶ Balance: G2.5 25,000 rpm. Higher balancing grade and revolution can be done upon request but additional charge is needed.
- ▶ AD+B type is available, please inform us when making an order.
- ▶ Use PN 3µm collet.

Standard Accessory: • NUT

Collet	Nut	Pull Stud	Preset Screw	Spanner
P.W-4	P.W-39	P.W-54~55	P.W-82	P.W-62~67

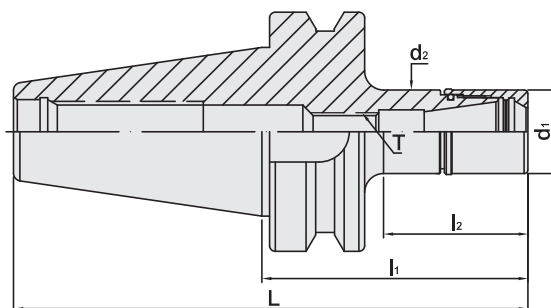
BT / PTER COLLET CHUCK



BT / PTER 立銑刀夾頭



T W PAT NO. M298033
 T W PAT NO. M311791
 J P PAT NO. 3128766
 J P PAT NO. 3200356
 K R PAT NO. 20-0433603
 C N PAT NO. ZL200620132661.0
 C H PAT NO. 696550
 T R PAT NO. TR 2007 02942 Y
 I T PAT NO. N.0000266731



MODEL NO.	TYPE	L	l ₁	l ₂	d ₁	d ₂	T	SIZE RANGE	WEIGHT (KGS)
15732	BT30 x PTER11 - 70	118.4	70	43	16	16	M6 x 1.0P	3 ~ 7	0.43
15732 - 100	BT30 x PTER11 - 100	148.4	100	73	16	16	M6 x 1.0P	3 ~ 7	0.47
15732 - 120	BT30 x PTER11 - 120	168.4	120	93	16	16	M6 x 1.0P	3 ~ 7	0.49
15734	BT30 x PTER16 - 70	118.4	70	43	22	22	M10 x 1.5P	3 ~ 10	0.46
15734 - 100	BT30 x PTER16 - 100	148.4	100	73	22	22	M10 x 1.5P	3 ~ 10	0.53
15734 - 120	BT30 x PTER16 - 120	168.4	120	93	22	22	M10 x 1.5P	3 ~ 10	0.58
15736	BT30 x PTER20 - 70	118.4	70	45	28	28	M12 x 1.75P	3 ~ 13	0.51
15736 - 100	BT30 x PTER20 - 100	148.4	100	75	28	28	M12 x 1.75P	3 ~ 13	0.63
15736 - 120	BT30 x PTER20 - 120	168.4	120	95	28	28	M12 x 1.75P	3 ~ 13	0.72
15736 - 150	BT30 x PTER20 - 150	198.4	150	125	28	28	M12 x 1.75P	3 ~ 13	0.84
15742	BT40 x PTER11 - 70	135.4	70	38	16	16	M6 x 1.0P	3 ~ 7	0.98
15742 - 100	BT40 x PTER11 - 100	165.4	100	63	16	16	M6 x 1.0P	3 ~ 7	1.03
15742 - 125	BT40 x PTER11 - 125	190.4	125	83	16	16	M6 x 1.0P	3 ~ 7	1.08
15742 - 150	BT40 x PTER11 - 150	215.4	150	108	16	16	M6 x 1.0P	3 ~ 7	1.11
15744	BT40 x PTER16 - 70	135.4	70	38	22	22	M10 x 1.5P	3 ~ 10	1.02
15744 - 100	BT40 x PTER16 - 100	165.4	100	63	22	22	M10 x 1.5P	3 ~ 10	1.10
15744 - 125	BT40 x PTER16 - 125	190.4	125	88	22	22	M10 x 1.5P	3 ~ 10	1.16
15744 - 150	BT40 x PTER16 - 150	215.4	150	113	22	22	M10 x 1.5P	3 ~ 10	1.22
15746	BT40 x PTER20 - 70	135.4	70	38	28	28	M12 x 1.75P	3 ~ 13	1.06
15746 - 100	BT40 x PTER20 - 100	165.4	100	63	28	28	M12 x 1.75P	3 ~ 13	1.25
15746 - 125	BT40 x PTER20 - 125	190.4	125	88	28	28	M12 x 1.75P	3 ~ 13	1.27
15746 - 150	BT40 x PTER20 - 150	215.4	150	113	28	28	M12 x 1.75P	3 ~ 13	1.36

Product information:

- ▶ Balance: G2.5 25,000 rpm. Higher balancing grade and revolution can be done upon request but additional charge is needed.
- ▶ AD+B type is available, please inform us when making an order.
- ▶ MAS/BT30 tool holders are without coolant supply over collars.
- ▶ Use PN-U 5µm collet.

Standard Accessory: • NUT

Collet	Nut	Pull Stud	Preset Screw	Spanner
P.W-4	P.W-41	P.W-54~55	P.W-82	P.W-62~67



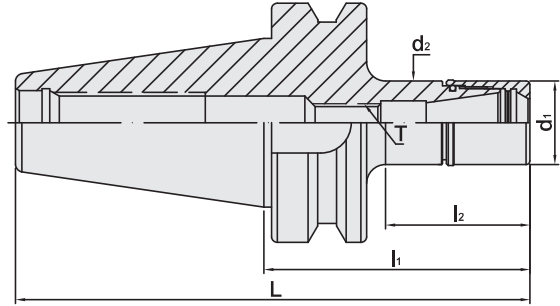
BT / PTER COLLET CHUCK



BT / PTER 立銑刀夾頭



T W PAT NO. M298033
 T W PAT NO. M311791
 J P PAT NO. 3128766
 J P PAT NO. 3200356
 K R PAT NO. 20-0433603
 C N PAT NO. ZL200620132661.0
 C H PAT NO. 696550
 T R PAT NO. TR 2007 02942 Y
 I T PAT NO. N.0000266731



MODEL NO.	TYPE	L	l ₁	l ₂	d ₁	d ₂	T	SIZE RANGE	WEIGHT (KGS)
15752	BT50 x PTER11 - 70	171.8	70	27	16	16	M6 x 1.0P	3 ~ 7	3.48
15752 - 90	BT50 x PTER11 - 90	191.8	90	42	16	16	M6 x 1.0P	3 ~ 7	3.52
15752 - 105	BT50 x PTER11 - 105	206.8	105	57	16	16	M6 x 1.0P	3 ~ 7	3.53
15752 - 135	BT50 x PTER11 - 135	236.8	135	73.5	16	16	M6 x 1.0P	3 ~ 7	3.63
15752 - 165	BT50 x PTER11 - 165	266.8	165	103.5	16	16	M6 x 1.0P	3 ~ 7	3.67
15754	BT50 x PTER16 - 70	171.8	70	27	22	22	M10 x 1.5P	3 ~ 10	3.53
15754 - 90	BT50 x PTER16 - 90	191.8	90	47	22	22	M10 x 1.5P	3 ~ 10	3.54
15754 - 105	BT50 x PTER16 - 105	206.8	105	59	22	22	M10 x 1.5P	3 ~ 10	3.56
15754 - 135	BT50 x PTER16 - 135	236.8	135	87	22	22	M10 x 1.5P	3 ~ 10	3.62
15754 - 165	BT50 x PTER16 - 165	266.8	165	117	22	22	M10 x 1.5P	3 ~ 10	3.68
15756	BT50 x PTER20 - 70	171.8	70	29	28	28	M12 x 1.75P	3 ~ 13	3.57
15756 - 90	BT50 x PTER20 - 90	191.8	90	47	28	28	M12 x 1.75P	3 ~ 13	3.62
15756 - 105	BT50 x PTER20 - 105	206.8	105	57	28	28	M12 x 1.75P	3 ~ 13	3.66
15756 - 135	BT50 x PTER20 - 135	236.8	135	87	28	28	M12 x 1.75P	3 ~ 13	3.82
15756 - 165	BT50 x PTER20 - 165	266.8	165	117	28	28	M12 x 1.75P	3 ~ 13	3.92

Product information:

- ▶ Balance: G2.5 25,000 rpm. Higher balancing grade and revolution can be done upon request but additional charge is needed.
- ▶ AD+B type is available, please inform us when making an order.
- ▶ Use PN-U 5µm collet.

Standard Accessory: • NUT

Collet	Nut	Pull Stud	Preset Screw	Spanner
P.W-4	P.W-41	P.W-54~55	P.W-82	P.W-62~67

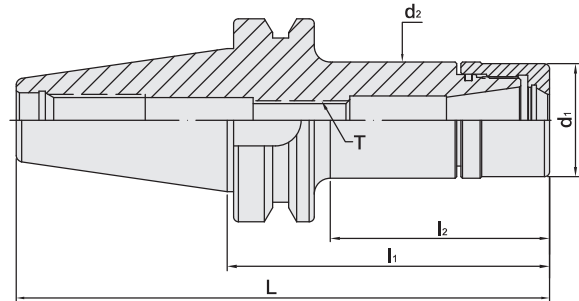
BT / UT COLLET CHUCK



BT / UT 立銑刀夾頭



T W PAT NO. M298033
 T W PAT NO. M311791
 J P PAT NO. 3128766
 K R PAT NO. 20-0433603
 C N PAT NO. ZL200620132661.0
 C H PAT NO. 696550
 T R PAT NO. TR 2007 02942 Y
 I T PAT NO. N.0000266731



MODEL NO.	TYPE	L	l ₁	l ₂	d ₁	d ₂	T	SIZE RANGE	WEIGHT (KGS)
10.753.16.070	BT30 x UT16 - 70	118.4	70	43	30	30	M10 x 1.5P	1 ~ 10	0.58
10.753.16.100	BT30 x UT16 - 100	148.4	100	73	30	30	M10 x 1.5P	1 ~ 10	0.72
10.753.16.125	BT30 x UT16 - 125	173.4	125	98	30	30	M10 x 1.5P	1 ~ 10	0.84
10.753.16.150	BT30 x UT16 - 150	198.4	150	123	30	30	M10 x 1.5P	1 ~ 10	0.96
10.753.20.070	BT30 x UT20 - 70	118.4	70	47	35	36	M12 x 1.75P	1 ~ 13	0.63
10.753.20.100	BT30 x UT20 - 100	148.4	100	77	35	36	M12 x 1.75P	1 ~ 13	0.85
10.753.20.125	BT30 x UT20 - 125	173.4	125	102	35	36	M12 x 1.75P	1 ~ 13	1.03
10.753.20.150	BT30 x UT20 - 150	198.4	150	127	35	36	M12 x 1.75P	1 ~ 13	1.21
10.753.25.070	BT30 x UT25 - 70	118.4	70	46	42	42	M16 x 2.0P	1 ~ 16	0.70
10.753.25.100	BT30 x UT25 - 100	148.4	100	76	42	42	M16 x 2.0P	1 ~ 16	1.00
10.753.25.150	BT30 x UT25 - 150	198.4	150	126	42	42	M16 x 2.0P	1 ~ 16	1.49
10.753.32.070	BT30 x UT32 - 70	118.4	70	48	48	48	M16 x 2.0P	2 ~ 20	0.71
10.753.32.100	BT30 x UT32 - 100	148.4	100	78	48	48	M16 x 2.0P	2 ~ 20	1.08
10.753.32.125	BT30 x UT32 - 125	173.4	125	103	48	48	M16 x 2.0P	2 ~ 20	1.38
10.753.32.150	BT30 x UT32 - 150	198.4	150	128	48	48	M16 x 2.0P	2 ~ 20	1.74

Product information:

- ▶ The pre-balance reaches G6.3 10,000 rpm. Higher balancing grade and revolution can be done upon request but additional charge is needed.
- ▶ MAS/BT30 tool holders are without coolant supply over collars.
- ▶ Use standard ER collets.

Standard Accessory: • NUT

Collet	Nut	Pull Stud	Preset Screw	Spanner
P.W-6~9	P.W-41	P.W-54~55	P.W-82	P.W-62~67



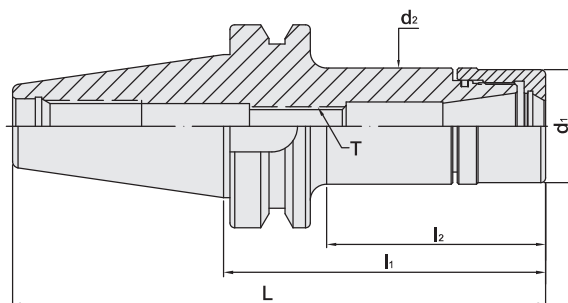
BT / UT COLLET CHUCK



BT / UT 立銑刀夾頭



T W PAT NO. M298033
 T W PAT NO. M311791
 J P PAT NO. 3128766
 K R PAT NO. 20-0433603
 C N PAT NO. ZL200620132661.0
 C H PAT NO. 696550
 T R PAT NO. TR 2007 02942 Y
 I T PAT NO. N.0000266731



MODEL NO.	TYPE	L	l ₁	l ₂	d ₁	d ₂	T	SIZE RANGE	WEIGHT (KGS)
11.753.16.070	BT40 x UT16 - 70	135.4	70	40	30	30	M10 x 1.5P	1 ~ 10	1.13
11.753.16.100	BT40 x UT16 - 100	165.4	100	63	30	30	M10 x 1.5P	1 ~ 10	1.27
11.753.16.125	BT40 x UT16 - 125	190.4	125	88	30	30	M10 x 1.5P	1 ~ 10	1.38
11.753.16.150	BT40 x UT16 - 150	215.4	150	113	30	30	M10 x 1.5P	1 ~ 10	1.49
11.753.20.070	BT40 x UT20 - 70	135.4	70	38	35	36	M12 x 1.75P	1 ~ 13	1.17
11.753.20.100	BT40 x UT20 - 100	165.4	100	68	35	36	M12 x 1.75P	1 ~ 13	1.38
11.753.20.125	BT40 x UT20 - 125	190.4	125	93	35	36	M12 x 1.75P	1 ~ 13	1.54
11.753.20.150	BT40 x UT20 - 150	215.4	150	118	35	36	M12 x 1.75P	1 ~ 13	1.71
11.753.25.070	BT40 x UT25 - 70	135.4	70	40	42	42	M16 x 2.0P	1 ~ 16	1.22
11.753.25.100	BT40 x UT25 - 100	165.4	100	70	42	42	M16 x 2.0P	1 ~ 16	1.50
11.753.25.150	BT40 x UT25 - 150	215.4	150	120	42	42	M16 x 2.0P	1 ~ 16	1.97
11.753.32.070	BT40 x UT32 - 70	135.4	70	40	48	48	M16 x 2.0P	2 ~ 20	1.23
11.753.32.100	BT40 x UT32 - 100	165.4	100	70	48	48	M16 x 2.0P	2 ~ 20	1.61
11.753.32.125	BT40 x UT32 - 125	190.4	125	95	48	48	M16 x 2.0P	2 ~ 20	1.93
11.753.32.150	BT40 x UT32 - 150	215.4	150	120	48	48	M16 x 2.0P	2 ~ 20	2.25

Product information:

- ▶ The pre-balance reaches G6.3 10,000 rpm. Higher balancing grade and revolution can be done upon request but additional charge is needed.
- ▶ AD+B type is available, please inform us when making an order.
- ▶ Use standard ER collets.

Standard Accessory: • NUT

Collet	Nut	Pull Stud	Preset Screw	Spanner
P.W-6~9	P.W-41	P.W-54~55	P.W-82	P.W-62~67

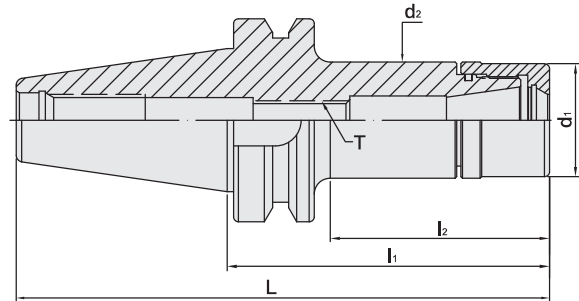
BT / UT COLLET CHUCK



BT / UT 立銑刀夾頭



T W PAT NO. M298033
 T W PAT NO. M311791
 J P PAT NO. 3128766
 K R PAT NO. 20-0433603
 C N PAT NO. ZL200620132661.0
 C H PAT NO. 696550
 T R PAT NO. TR 2007 02942 Y
 I T PAT NO. N.0000266731



MODEL NO.	TYPE	L	l ₁	l ₂	d ₁	d ₂	T	SIZE RANGE	WEIGHT (KGS)
12.753.16.070	BT50 x UT16 - 70	171.8	70	29	30	30	M10 x 1.5P	1 ~ 10	3.64
12.753.16.100	BT50 x UT16 - 100	201.8	100	52	30	30	M10 x 1.5P	1 ~ 10	3.74
12.753.16.125	BT50 x UT16 - 125	226.8	125	77	30	30	M10 x 1.5P	1 ~ 10	3.92
12.753.16.150	BT50 x UT16 - 150	251.8	150	102	30	30	M10 x 1.5P	1 ~ 10	4.00
12.753.20.070	BT50 x UT20 - 70	171.8	70	31.6	35	36	M12 x 1.75P	1 ~ 13	3.68
12.753.20.100	BT50 x UT20 - 100	201.8	100	52	35	36	M12 x 1.75P	1 ~ 13	3.86
12.753.20.125	BT50 x UT20 - 125	226.8	125	77	35	36	M12 x 1.75P	1 ~ 13	3.99
12.753.20.150	BT50 x UT20 - 150	251.8	150	102	35	36	M12 x 1.75P	1 ~ 13	4.24
12.753.25.070	BT50 x UT25 - 70	171.8	70	29.8	42	42	M16 x 2.0P	1 ~ 16	3.70
12.753.25.100	BT50 x UT25 - 100	201.8	100	52	42	42	M16 x 2.0P	1 ~ 16	4.01
12.753.25.150	BT50 x UT25 - 150	251.8	150	102	42	42	M16 x 2.0P	1 ~ 16	4.36
12.753.32.080	BT50 x UT32 - 80	181.8	80	41	48	48	M16 x 2.0P	2 ~ 20	3.80
12.753.32.100	BT50 x UT32 - 100	201.8	100	57	48	48	M16 x 2.0P	2 ~ 20	4.03
12.753.32.125	BT50 x UT32 - 125	226.8	125	82	48	48	M16 x 2.0P	2 ~ 20	4.31
12.753.32.150	BT50 x UT32 - 150	251.8	150	102	48	48	M16 x 2.0P	2 ~ 20	4.62

Product information:

- ▶ The pre-balance reaches G6.3 10,000 rpm. Higher balancing grade and revolution can be done upon request but additional charge is needed.
- ▶ AD+B type is available, please inform us when making an order.
- ▶ Use standard ER collets.

Standard Accessory: • NUT

Collet	Nut	Pull Stud	Preset Screw	Spanner
P.W-6~9	P.W-41	P.W-54~55	P.W-82	P.W-62~67



BT / ER COLLET CHUCK

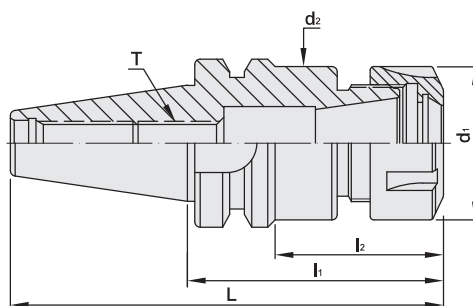


BT / ER 立銑刀夾頭

(DIN ISO 15488)



T W PAT NO. M298033
 T W PAT NO. M311791
 J P PAT NO. 3128766
 K R PAT NO. 20-0433603
 C N PAT NO. ZL200620132661.0
 C H PAT NO. 696550
 T R PAT NO. TR 2007 02942 Y
 I T PAT NO. N.0000266731



MODEL NO.	TYPE	L	l ₁	l ₂	d ₁	d ₂	T	SIZE RANGE	WEIGHT (KGS)
16101 - 50	BT30 x ER16A - 50	98.4	50	27	28	25.1	M10 x 1.5P	1 ~ 10	0.45
16101	BT30 x ER16A - 70	118.4	70	40	28	28	M10 x 1.5P	1 ~ 10	0.55
16102	BT30 x ER16A - 60	108.4	60	35	28	28	M10 x 1.5P	1 ~ 10	0.60
16104	BT30 x ER16A - 100	148.4	100	70	28	28	M10 x 1.5P	1 ~ 10	0.70
16105	BT30 x ER16A - 120	168.4	120	93	28	28	M10 x 1.5P	1 ~ 10	0.78
16106 - 50	BT30 x ER20A - 50	98.4	50	28	34	-	M12 x 1.75P	1 ~ 13	0.48
16106	BT30 x ER20A - 70	118.4	70	45	34	34	M12 x 1.75P	1 ~ 13	0.62
16107	BT30 x ER20A - 135	183.4	135	110	34	34	M12 x 1.75P	1 ~ 13	1.10
16109	BT30 x ER25 - 70	118.4	70	46	42	42	M16 x 2.0P	1 ~ 16	0.70
16111	BT30 x ER25 - 135	183.4	135	111	42	42	M16 x 2.0P	1 ~ 16	1.45
16113	BT30 x ER32 - 70	118.4	70	48	50	45	M16 x 2.0P	2 ~ 20	0.70
16114	BT30 x ER32 - 100	148.4	100	78	50	45	M16 x 2.0P	2 ~ 20	1.00
16115	BT30 x ER40 - 80	128.4	80	58	63	53	M16 x 2.0P	3 ~ 26	1.10
16151	BT40 x ER16A - 70	135.4	70	40	28	28	M10 x 1.5P	1 ~ 10	1.20
16153	BT40 x ER16A - 100	165.4	100	63	28	28	M10 x 1.5P	1 ~ 10	1.30
16155	BT40 x ER16A - 125	190.4	125	88	28	28	M10 x 1.5P	1 ~ 10	1.36
16157	BT40 x ER16A - 150	215.4	150	113	28	28	M10 x 1.5P	1 ~ 10	1.54
16158	BT40 x ER16A - 180	245.4	180	143	28	28	M10 x 1.5P	1 ~ 10	2.00
16159	BT40 x ER20A - 70	135.4	70	40	34	34	M12 x 1.75P	1 ~ 13	1.20
16162	BT40 x ER20A - 100	165.4	100	63	34	34	M12 x 1.75P	1 ~ 13	1.80
16165	BT40 x ER20A - 135	200.4	135	98	34	34	M12 x 1.75P	1 ~ 13	1.70
16167	BT40 x ER20A - 150	215.4	150	113	34	34	M12 x 1.75P	1 ~ 13	1.80
16169	BT40 x ER25 - 70	135.4	70	40	42	42	M16 x 2.0P	1 ~ 16	1.30
16171	BT40 x ER25 - 100	165.4	100	70	42	42	M16 x 2.0P	1 ~ 16	1.50
16173	BT40 x ER25 - 125	190.4	125	95	42	42	M16 x 2.0P	1 ~ 16	1.80
16175	BT40 x ER25 - 150	215.4	150	115	42	42	M16 x 2.0P	1 ~ 16	2.10
16177	BT40 x ER32 - 70	135.4	70	40	50	50	M16 x 2.0P	2 ~ 20	1.30
16179	BT40 x ER32 - 100	165.4	100	70	50	50	M16 x 2.0P	2 ~ 20	1.70
16181	BT40 x ER32 - 150	215.4	150	118	50	50	M16 x 2.0P	2 ~ 20	2.50
16183	BT40 x ER40 - 80	145.4	80	53	63	60	-	3 ~ 26	1.50
16185	BT40 x ER40 - 100	165.4	100	73	63	60	M20 x 2.0P	3 ~ 26	2.00
16187	BT40 x ER40 - 120	185.4	120	93	63	60	M20 x 2.0P	3 ~ 26	2.50
16189	BT40 x ER40 - 150	215.4	150	123	63	60	M20 x 2.0P	3 ~ 26	3.10
16191	BT40 x ER50 - 85	150.4	85	58	78	60	M24 x 2.0P	6 ~ 34	1.70
16193	BT40 x ER50 - 100	165.4	100	73	78	60	M24 x 2.0P	6 ~ 34	2.10

Standard Accessory: • NUT

Collet	Nut	Pull Stud	Preset Screw	Spanner
P.W-6~24	P.W-42	P.W-54~55	P.W-82	P.W-62~65

BT / ER COLLET CHUCK

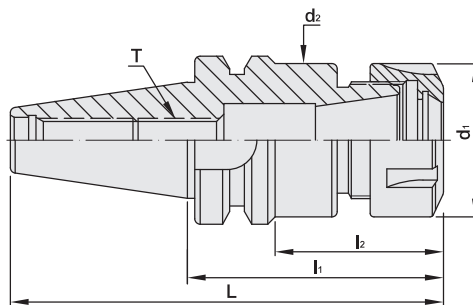


BT / ER 立銑刀夾頭

(DIN ISO 15488)



T W PAT NO. M298033
 T W PAT NO. M311791
 J P PAT NO. 3128766
 K R PAT NO. 20-0433603
 C N PAT NO. ZL200620132661.0
 C H PAT NO. 696550
 T R PAT NO. TR 2007 02942 Y
 I T PAT NO. N.0000266731



MODEL NO.	TYPE	L	l ₁	l ₂	d ₁	d ₂	T	SIZE RANGE	WEIGHT (KGS)
16251	BT50 x ER16A - 70	171.8	70	29	28	28	M10 x 1.5P	1 ~ 10	4.05
16252	BT50 x ER16A - 90	191.8	90	47	28	28	M10 x 1.5P	1 ~ 10	4.20
16253	BT50 x ER16A - 105	206.8	105	57	28	28	M10 x 1.5P	1 ~ 10	4.30
16254	BT50 x ER16A - 135	236.8	135	87	28	28	M10 x 1.5P	1 ~ 10	4.40
16255	BT50 x ER16A - 150	251.8	150	102	28	28	M10 x 1.5P	1 ~ 10	4.50
16259	BT50 x ER16A - 165	266.8	165	117	28	28	M10 x 1.5P	1 ~ 10	4.50
16259 - 200	BT50 x ER16A - 200	301.8	200	152	28	28	M10 x 1.5P	1 ~ 10	4.60
16259 - 250	BT50 x ER16A - 250	351.8	250	202	28	28	M10 x 1.5P	1 ~ 10	4.70
16259 - 300	BT50 x ER16A - 300	401.8	300	252	28	28	M10 x 1.5P	1 ~ 10	4.80
16261	BT50 x ER20A - 70	171.8	70	29	34	34	M12 x 1.75P	1 ~ 13	4.20
16263	BT50 x ER20A - 90	191.8	90	47	34	34	M12 x 1.75P	1 ~ 13	4.25
16265	BT50 x ER20A - 105	206.8	105	57	34	34	M12 x 1.75P	1 ~ 13	4.30
16267	BT50 x ER20A - 135	236.8	135	87	34	34	M12 x 1.75P	1 ~ 13	4.55
16269	BT50 x ER20A - 150	251.8	150	102	34	34	M12 x 1.75P	1 ~ 13	4.70
16271	BT50 x ER20A - 165	266.8	165	117	34	34	M12 x 1.75P	1 ~ 13	4.80
16272	BT50 x ER20A - 200	301.8	200	152	34	34	M12 x 1.75P	1 ~ 13	4.90
16272 - 250	BT50 x ER20A - 250	351.8	250	202	34	34	M12 x 1.75P	1 ~ 13	5.10
16272 - 300	BT50 x ER20A - 300	401.8	300	252	34	34	M12 x 1.75P	1 ~ 13	5.30
16273	BT50 x ER25 - 70	171.8	70	29	42	42	M16 x 2.0P	1 ~ 16	4.20
16275	BT50 x ER25 - 105	206.8	105	57	42	42	M16 x 2.0P	1 ~ 16	4.40
16277	BT50 x ER25 - 135	236.8	135	87	42	42	M16 x 2.0P	1 ~ 16	4.70
16279	BT50 x ER25 - 165	266.8	165	117	42	42	M16 x 2.0P	1 ~ 16	5.00
16279 - 250	BT50 x ER25 - 250	351.8	250	202	42	42	M16 x 2.0P	1 ~ 16	5.30
16279 - 300	BT50 x ER25 - 300	401.8	300	252	42	42	M16 x 2.0P	1 ~ 16	5.70
16279 - 350	BT50 x ER25 - 350	451.8	350	302	42	42	M16 x 2.0P	1 ~ 16	6.10

Product information:

- ▶ The pre-balance reaches G6.3 10,000 rpm. Higher balancing grade and revolution can be done upon request but additional charge is needed.
- ▶ AD+B type is available, please inform us when making an order.

Standard Accessory: • NUT

Collet	Nut	Pull Stud	Preset Screw	Spanner
P.W-6~24	P.W-42	P.W-54~55	P.W-82	P.W-62~65



BT / ER COLLET CHUCK

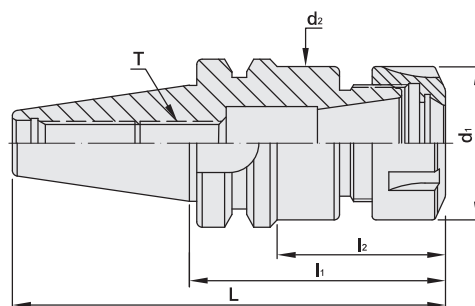


BT / ER 立銑刀夾頭

[DIN ISO 15488]



T W PAT NO. M298033
 T W PAT NO. M311791
 J P PAT NO. 3128766
 K R PAT NO. 20-0433603
 C N PAT NO. ZL200620132661.0
 C H PAT NO. 696550
 T R PAT NO. TR 2007 02942 Y
 I T PAT NO. N.0000266731



MODEL NO.	TYPE	L	l ₁	l ₂	d ₁	d ₂	T	SIZE RANGE	WEIGHT (KGS)
16281	BT50 x ER32 - 80	181.8	80	39	50	50	M16 x 2.0P	2 ~ 20	4.70
16282	BT50 x ER32 - 100	201.8	100	57	50	50	M16 x 2.0P	2 ~ 20	4.80
16283	BT50 x ER32 - 120	221.8	120	72	50	50	M16 x 2.0P	2 ~ 20	4.70
16284	BT50 x ER32 - 150	251.8	150	102	50	50	M16 x 2.0P	2 ~ 20	5.30
16284 - 200	BT50 x ER32 - 200	301.8	200	152	50	50	M16 x 2.0P	2 ~ 20	5.50
16284 - 300	BT50 x ER32 - 300	401.8	300	252	50	50	M16 x 2.0P	2 ~ 20	6.70
16284 - 350	BT50 x ER32 - 350	451.8	350	302	50	50	M16 x 2.0P	2 ~ 20	7.40
16284 - 400	BT50 x ER32 - 400	501.8	400	352	50	50	M16 x 2.0P	2 ~ 20	8.00
16284 - 450	BT50 x ER32 - 450	551.8	450	402	50	50	M16 x 2.0P	2 ~ 20	8.50
16285	BT50 x ER40 - 80	181.8	80	39	63	63	M20 x 2.0P	3 ~ 26	4.30
16286	BT50 x ER40 - 100	201.8	100	57	63	63	M20 x 2.0P	3 ~ 26	4.64
16287	BT50 x ER40 - 120	221.8	120	72	63	63	M20 x 2.0P	3 ~ 26	5.10
16289	BT50 x ER40 - 135	236.8	135	87	63	63	M20 x 2.0P	3 ~ 26	5.50
16289 - 250	BT50 x ER40 - 250	351.8	250	202	63	63	M20 x 2.0P	3 ~ 26	7.90
16289 - 300	BT50 x ER40 - 300	401.8	300	252	63	63	M20 x 2.0P	3 ~ 26	9.00
16289 - 350	BT50 x ER40 - 350	451.8	350	302	63	63	M20 x 2.0P	3 ~ 26	10.1
16289 - 400	BT50 x ER40 - 400	501.8	400	352	63	63	M20 x 2.0P	3 ~ 26	11.1
16291	BT50 x ER50 - 90	191.8	90	49	78	78	M24 x 2.0P	6 ~ 34	4.60
16293	BT50 x ER50 - 120	221.8	120	79	78	78	M24 x 2.0P	6 ~ 34	5.50
16295	BT50 x ER50 - 165	266.8	165	124	78	78	M24 x 2.0P	6 ~ 34	6.10
16295 - 200	BT50 x ER50 - 200	301.8	200	157	78	78	M24 x 2.0P	6 ~ 34	8.60
16295 - 250	BT50 x ER50 - 250	351.8	250	207	78	78	M24 x 2.0P	6 ~ 34	10.3
16295 - 300	BT50 x ER50 - 300	401.8	300	257	78	78	M24 x 2.0P	6 ~ 34	12.0
16295 - 350	BT50 x ER50 - 350	451.8	350	307	78	78	M24 x 2.0P	6 ~ 34	13.7
16295 - 400	BT50 x ER50 - 400	501.8	400	357	78	78	M24 x 2.0P	6 ~ 34	15.4

Product information:

- ▶ The pre-balance reaches G6.3 10,000 rpm. Higher balancing grade and revolution can be done upon request but additional charge is needed.
- ▶ AD+B type is available, please inform us when making an order.

Standard Accessory: • NUT

Collet	Nut	Pull Stud	Preset Screw	Spanner
P.W-6~24	P.W-42	P.W-54~55	P.W-82	P.W-62~65

BT / ER COLLET CHUCK

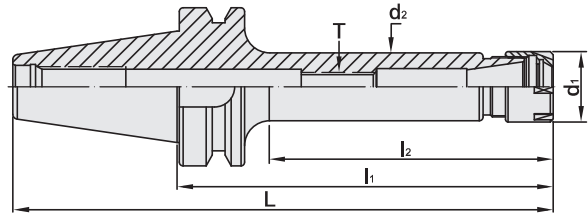
M TYPE

BT



M 型 BT / ER 立銑刀夾頭

[DIN ISO 15488]



T W PAT NO. M298033
 T W PAT NO. M311791
 J P PAT NO. 3128766
 K R PAT NO. 20-0433603
 C N PAT NO. ZL200620132661.0
 C H PAT NO. 696550
 T R PAT NO. TR 2007 02942 Y
 I T PAT NO. N.0000266731

MODEL NO.	TYPE	L	l ₁	l ₂	d ₁	d ₂	T	SIZE RANGE	WEIGHT (KGS)
16302	BT30 x ER11M - 70	118.4	70	40	16	15	M6 x 1.0P	1 ~ 7	0.50
16304	BT30 x ER11M - 100	148.4	100	70	16	15	M6 x 1.0P	1 ~ 7	0.60
16306	BT30 x ER11M - 120	168.4	120	88	16	15	M6 x 1.0P	1 ~ 7	0.70
16308	BT30 x ER16M - 70	118.4	70	43	22	21	M10 x 1.5P	1 ~ 10	0.55
16310	BT30 x ER16M - 100	148.4	100	68	22	21	M10 x 1.5P	1 ~ 10	0.56
16312	BT30 x ER16M - 120	168.4	120	88	22	21	M10 x 1.5P	1 ~ 10	0.75
16313	BT30 x ER20M - 70	118.4	70	45	28	27	M12 x 1.75P	1 ~ 13	0.65
16314	BT30 x ER20M - 100	148.4	100	71	28	27	M12 x 1.75P	1 ~ 13	0.70
16316	BT30 x ER20M - 120	168.4	120	91	28	27	M12 x 1.75P	1 ~ 13	0.80
16318	BT30 x ER20M - 150	198.4	150	121	28	27	M12 x 1.75P	1 ~ 13	1.00
16321	BT40 x ER11M - 70	135.4	70	33	16	15	M6 x 1.0P	1 ~ 7	1.10
16322	BT40 x ER11M - 100	165.4	100	63	16	15	M6 x 1.0P	1 ~ 7	1.10
16323	BT40 x ER11M - 125	190.4	125	88	16	15	M6 x 1.0P	1 ~ 7	1.12
16324	BT40 x ER11M - 150	215.4	150	113	16	15	M6 x 1.0P	1 ~ 7	1.20
16325	BT40 x ER16M - 70	135.4	70	38	22	21	M10 x 1.5P	1 ~ 10	1.10
16326	BT40 x ER16M - 100	165.4	100	63	22	21	M10 x 1.5P	1 ~ 10	1.16
16327	BT40 x ER16M - 125	190.4	125	88	22	21	M10 x 1.5P	1 ~ 10	1.20
16328	BT40 x ER16M - 150	215.4	150	113	22	21	M10 x 1.5P	1 ~ 10	1.30
16329	BT40 x ER20M - 70	135.4	70	38	28	27	M12 x 1.75P	1 ~ 13	1.20
16330	BT40 x ER20M - 100	165.4	100	63	28	27	M12 x 1.75P	1 ~ 13	1.25
16331	BT40 x ER20M - 125	190.4	125	88	28	27	M12 x 1.75P	1 ~ 13	1.30
16332	BT40 x ER20M - 150	215.4	150	113	28	27	M12 x 1.75P	1 ~ 13	1.45

Product information:

- ▶ The pre-balance reaches G6.3 10,000 rpm. Higher balancing grade and revolution can be done upon request but additional charge is needed.
- ▶ AD+B type is available, please inform us when making an order.
- ▶ MAS/BT30 tool holders are without coolant supply over collars.

Standard Accessory: • NUT

Collet	Nut	Pull Stud	Preset Screw	Spanner
P.W-6~24	P.W-43	P.W-54~55	P.W-82	P.W-62~65



BT / ER COLLET CHUCK

M TYPE

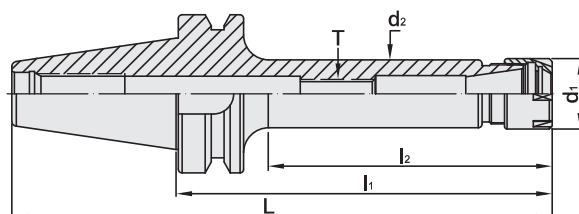


M 型 BT / ER 立銑刀夾頭

[DIN ISO 15488]



T W PAT NO. M298033
 T W PAT NO. M311791
 J P PAT NO. 3128766
 K R PAT NO. 20-0433603
 C N PAT NO. ZL200620132661.0
 C H PAT NO. 696550
 T R PAT NO. TR 2007 02942 Y
 I T PAT NO. N.0000266731



MODEL NO.	TYPE	L	l ₁	l ₂	d ₁	d ₂	T	SIZE RANGE	WEIGHT (KGS)
16334	BT50 x ER11M - 70	171.8	70	22	16	15	M6 x 1.0P	1 ~ 7	3.80
16335	BT50 x ER11M - 90	191.8	90	42	16	15	M6 x 1.0P	1 ~ 7	3.90
16336	BT50 x ER11M - 105	206.8	105	57	16	15	M6 x 1.0P	1 ~ 7	4.00
16337	BT50 x ER11M - 135	236.8	135	87	16	15	M6 x 1.0P	1 ~ 7	4.10
16338	BT50 x ER11M - 165	266.8	165	92	16	15	M6 x 1.0P	1 ~ 7	4.20
16339	BT50 x ER16M - 70	171.8	70	29	22	21	M10 x 1.5P	1 ~ 10	3.90
16340	BT50 x ER16M - 90	191.8	90	42	22	21	M10 x 1.5P	1 ~ 10	4.00
16341	BT50 x ER16M - 105	206.8	105	57	22	21	M10 x 1.5P	1 ~ 10	4.10
16342	BT50 x ER16M - 135	236.8	135	87	22	21	M10 x 1.5P	1 ~ 10	4.20
16343	BT50 x ER16M - 165	266.8	165	117	22	21	M10 x 1.5P	1 ~ 10	4.30
16344	BT50 x ER20M - 90	191.8	90	42	28	27	M12 x 1.75P	1 ~ 13	4.10
16345	BT50 x ER20M - 105	206.8	105	57	28	27	M12 x 1.75P	1 ~ 13	4.20
16346	BT50 x ER20M - 135	236.8	135	87	28	27	M12 x 1.75P	1 ~ 13	4.40
16347	BT50 x ER20M - 165	266.8	165	117	28	27	M12 x 1.75P	1 ~ 13	4.60

Product information:

- ▶ The pre-balance reaches G6.3 10,000 rpm. Higher balancing grade and revolution can be done upon request but additional charge is needed.
- ▶ AD+B type is available, please inform us when making an order.

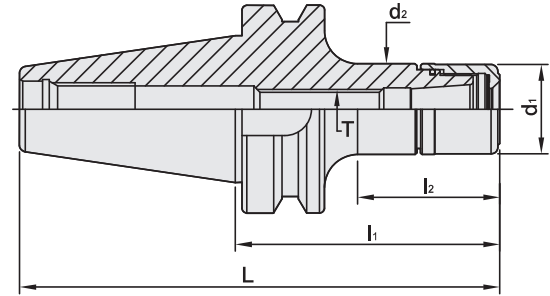
Standard Accessory: • NUT

Collet	Nut	Pull Stud	Preset Screw	Spanner
P.W-6~24	P.W-43	P.W-54~55	P.W-82	P.W-62~65

BT / SK3 COLLET CHUCK

5 μ m

BT / SK3 高速機專用夾頭



MODEL NO.	TYPE	L	l ₁	l ₂	d ₁	d ₂	T	SIZE RANGE	WEIGHT (KGS)
10.763.06.060	BT30 x SK306 - 60	108.4	60	33	19.5	19.5	M8 x 1.25P	3 ~ 6	0.90
10.763.06.080	BT30 x SK306 - 80	128.4	80	53	19.5	19.5	M8 x 1.25P	3 ~ 6	1.00
10.763.10.060	BT30 x SK310 - 60	108.4	60	35	27.5	27.5	M12 x 1.75P	3 ~ 10	0.90
10.763.10.080	BT30 x SK310 - 80	128.4	80	55	27.5	27.5	M12 x 1.75P	3 ~ 10	1.00
10.763.13.060	BT30 x SK313 - 60	108.4	60	35	33	33	M12 x 1.75P	3 ~ 13	1.10
10.763.13.080	BT30 x SK313 - 80	128.4	80	55	33	33	M12 x 1.75P	3 ~ 13	1.00
10.763.16.060	BT30 x SK316 - 60	108.4	60	37	40	40	M18 x 1.5P	3 ~ 16	1.20
10.763.16.080	BT30 x SK316 - 80	128.4	80	57	40	40	M18 x 1.5P	3 ~ 16	1.30
11.763.06.080	BT40 x SK306 - 80	145.4	80	43	19.5	19.5	M8 x 1.25P	3 ~ 6	1.10
11.763.06.100	BT40 x SK306 - 100	165.4	100	63	19.5	19.5	M8 x 1.25P	3 ~ 6	1.30
11.763.06.120	BT40 x SK306 - 120	185.4	120	83	19.5	19.5	M8 x 1.25P	3 ~ 6	1.40
11.763.10.080	BT40 x SK310 - 80	145.4	80	43	27.5	27.5	M12 x 1.75P	3 ~ 10	1.10
11.763.10.100	BT40 x SK310 - 100	165.4	100	63	27.5	27.5	M12 x 1.75P	3 ~ 10	1.30
11.763.10.120	BT40 x SK310 - 120	185.4	120	83	27.5	27.5	M12 x 1.75P	3 ~ 10	1.40
11.763.13.080	BT40 x SK313 - 80	145.4	80	50	33	33	M12 x 1.75P	3 ~ 13	1.10
11.763.13.100	BT40 x SK313 - 100	165.4	100	70	33	33	M12 x 1.75P	3 ~ 13	1.30
11.763.13.120	BT40 x SK313 - 120	185.4	120	90	33	33	M12 x 1.75P	3 ~ 13	1.40
11.763.16.080	BT40 x SK316 - 80	145.4	80	48	40	40	M18 x 1.5P	3 ~ 16	1.20
11.763.16.100	BT40 x SK316 - 100	165.4	100	68	40	40	M18 x 1.5P	3 ~ 16	1.40
11.763.16.120	BT40 x SK316 - 120	185.4	120	88	40	40	M18 x 1.5P	3 ~ 16	1.50

Product information:

- ▶ Balance: G2.5 25,000 rpm. Higher balancing grade and revolution can be done upon request but additional charge is needed.
- ▶ AD+B type is available, please inform us when making an order.
- ▶ MAS/BT30 tool holders are without coolant supply over collars.

Standard Accessory: • NUT

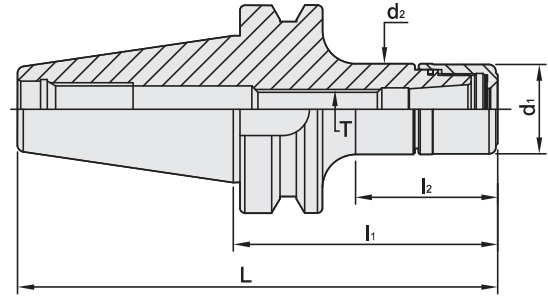
Collet	Nut	Pull Stud	Preset Screw	Spanner
				
P.W-25~28	P.W-46	P.W-54~55	P.W-82	P.W-62~67



BT / SK3 COLLET CHUCK

5 μ m

BT / SK3 高速機專用夾頭



MODEL NO.	TYPE	L	l ₁	l ₂	d ₁	d ₂	T	SIZE RANGE	WEIGHT (KGS)
12.763.06.080	BT50 x SK306 - 80	181.8	80	34	19.5	19.5	M8 x 1.25P	3 ~ 6	4.00
12.763.06.100	BT50 x SK306 - 100	201.8	100	54	19.5	19.5	M8 x 1.25P	3 ~ 6	4.10
12.763.06.120	BT50 x SK306 - 120	221.8	120	61	19.5	19.5	M8 x 1.25P	3 ~ 6	4.20
12.763.10.080	BT50 x SK310 - 80	181.8	80	39	27.5	27.5	M12 x 1.75P	3 ~ 10	4.10
12.763.10.100	BT50 x SK310 - 100	201.8	100	57	27.5	27.5	M12 x 1.75P	3 ~ 10	4.20
12.763.10.120	BT50 x SK310 - 120	221.8	120	79	27.5	27.5	M12 x 1.75P	3 ~ 10	4.30
12.763.13.080	BT50 x SK313 - 80	181.8	80	39	33	33	M12 x 1.75P	3 ~ 13	4.20
12.763.13.100	BT50 x SK313 - 100	201.8	100	52	33	33	M12 x 1.75P	3 ~ 13	4.30
12.763.13.120	BT50 x SK313 - 120	221.8	120	79	33	33	M12 x 1.75P	3 ~ 13	4.40
12.763.16.080	BT50 x SK316 - 80	181.8	80	40	40	40	M18 x 1.5P	3 ~ 16	4.30
12.763.16.100	BT50 x SK316 - 100	201.8	100	57	40	40	M18 x 1.5P	3 ~ 16	4.40
12.763.16.120	BT50 x SK316 - 120	221.8	120	72	40	40	M18 x 1.5P	3 ~ 16	4.50

Product information:

- ▶ Balance: G2.5 25,000 rpm. Higher balancing grade and revolution can be done upon request but additional charge is needed.
- ▶ AD+B type is available, please inform us when making an order.

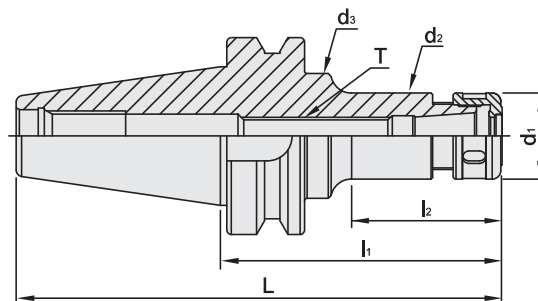
Standard Accessory: • NUT

Collet	Nut	Pull Stud	Preset Screw	Spanner
				
P.W-25~28	P.W-46	P.W-54~55	P.W-82	P.W-62~67

BT / SKS COLLET CHUCK

5 μ m

BT / SKS 高速機專用夾頭



T W PAT NO. M270871

MODEL NO.	TYPE	L	l ₁	l ₂	d ₁	d ₂	d ₃	T	SIZE RANGE	WEIGHT (KGS)
18330	BT30 x SKS6 - 45	93.4	45	22	18	18	-	M8 x 1.25P	3 ~ 6	0.80
18331	BT30 x SKS6 - 60	108.4	60	33	18	18	-	M8 x 1.25P	3 ~ 6	0.90
18332	BT30 x SKS10 - 45	93.4	45	22	30	27.6	-	M12 x 1.75P	3 ~ 10	0.80
18332 - 60	BT30 x SKS10 - 60	108.4	60	33	30	27.6	-	M12 x 1.75P	3 ~ 10	0.90
18332 - 90	BT30 x SKS10 - 90	138.4	90	63	30	27.6	-	M12 x 1.75P	3 ~ 10	1.00
18334	BT30 x SKS13 - 60	108.4	60	35	35	33	-	M12 x 1.75P	3 ~ 13	0.70
18334 - 90	BT30 x SKS13 - 90	138.4	90	65	35	33	-	M12 x 1.75P	3 ~ 13	1.10
18334 - 120	BT30 x SKS13 - 120	168.4	120	95	35	33	-	M12 x 1.75P	3 ~ 13	1.20
18335	BT30 x SKS16 - 60	108.4	60	37	40	40	-	M18 x 1.5P	3 ~ 16	0.70
18335 - 90	BT30 x SKS16 - 90	138.4	90	67	40	40	-	M18 x 1.5P	3 ~ 16	1.20
18336	BT30 x SKS20 - 60	108.4	60	33	48.5	48.5	-	M12 x 1.75P	3 ~ 20	0.70
18336 - 90	BT30 x SKS20 - 90	138.4	90	60	48.5	48.5	-	M12 x 1.75P	3 ~ 20	1.20
18338	BT40 x SKS6 - 90	155.4	90	44	18	18	32	M8 x 1.25P	3 ~ 6	1.20
18339	BT40 x SKS6 - 120	185.4	120	74	18	18	32	M8 x 1.25P	3 ~ 6	1.40
18340	BT40 x SKS10 - 90	155.4	90	45	30	27.6	40	M12 x 1.75P	3 ~ 10	1.50
18342	BT40 x SKS10 - 120	185.4	120	74	30	27	40	M12 x 1.75P	3 ~ 10	1.60
18342 - 130	BT40 x SKS10 - 130	195.4	130	84	30	27	40	M12 x 1.75P	3 ~ 10	1.70
18342 - 150	BT40 x SKS10 - 150	215.4	150	104	30	27	40	M12 x 1.75P	3 ~ 10	1.90
18342 - 200	BT40 x SKS10 - 200	265.4	200	162	30	27	40	M12 x 1.75P	3 ~ 10	2.20
18343	BT40 x SKS13 - 60	125.4	60	30	35	33	-	M12 x 1.75P	3 ~ 13	1.20
18343 - 90	BT40 x SKS13 - 90	155.4	90	60	35	33	-	M12 x 1.75P	3 ~ 13	1.40
18343 - 120	BT40 x SKS13 - 120	185.4	120	90	35	33	-	M12 x 1.75P	3 ~ 13	1.60
18343 - 150	BT40 x SKS13 - 150	215.4	150	120	35	33	-	M12 x 1.75P	3 ~ 13	1.70
18343 - 200	BT40 x SKS13 - 200	265.4	200	170	35	33	-	M12 x 1.75P	3 ~ 13	2.00
18344	BT40 x SKS16 - 90	155.4	90	58	40	40	-	M18 x 1.5P	3 ~ 16	1.60
18346	BT40 x SKS16 - 120	185.4	120	88	40	40	-	M18 x 1.5P	3 ~ 16	1.70
18346 - 150	BT40 x SKS16 - 150	215.4	150	118	40	40	-	M18 x 1.5P	3 ~ 16	1.90
18347	BT40 x SKS16 - 200	265.4	200	168	40	40	-	M18 x 1.5P	3 ~ 16	2.10
18348	BT40 x SKS20 - 60	125.4	60	32	48.5	48.5	-	M22 x 1.5P	3 ~ 20	1.30
18348 - 90	BT40 x SKS20 - 90	155.4	90	60	48.5	48.5	-	M22 x 1.5P	3 ~ 20	1.60
18348 - 120	BT40 x SKS20 - 120	185.4	120	88	48.5	48.5	-	M22 x 1.5P	3 ~ 20	2.00
18348 - 150	BT40 x SKS20 - 150	215.4	150	118	48.5	48.5	-	M22 x 1.5P	3 ~ 20	2.10
18348 - 200	BT40 x SKS20 - 200	265.4	200	168	48.5	48.5	-	M22 x 1.5P	3 ~ 20	2.20
18352	BT40 x SKS25 - 90	155.4	90	61	55	55	-	M28 x 2.0P	3 ~ 25.4	1.70
18354	BT40 x SKS25 - 120	185.4	120	91	55	55	-	M28 x 2.0P	3 ~ 25.4	1.80

Standard Accessory: • NUT

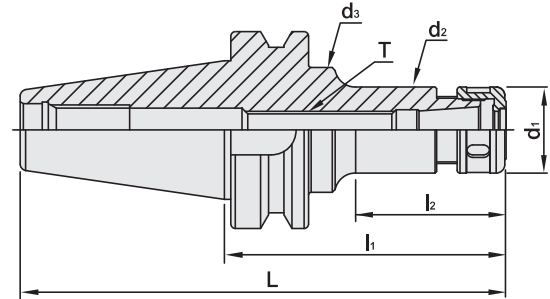
Collet	Nut	Pull Stud	Preset Screw	Spanner
P.W-25~28	P.W-47~48	P.W-54~55	P.W-82	P.W-62~67



BT / SKS COLLET CHUCK

5 μ m

BT / SKS 高速機專用夾頭



T W PAT NO. M270871

MODEL NO.	TYPE	L	l ₁	l ₂	d ₁	d ₂	d ₃	T	SIZE RANGE	WEIGHT (KGS)
18360	BT50 x SKS6 - 90	191.8	90	42	18	18	-	M8 x 1.25P	3 ~ 6	4.0
18362	BT50 x SKS6 - 120	221.8	120	60	18	18	32	M8 x 1.25P	3 ~ 6	4.2
18370	BT50 x SKS10 - 105	206.8	105	57	30	27.6	-	M12 x 1.75P	3 ~ 10	4.5
18372	BT50 x SKS10 - 150	251.8	150	94	30	27	40	M12 x 1.75P	3 ~ 10	4.6
18374	BT50 x SKS10 - 165	266.8	165	108	30	27	40	M12 x 1.75P	3 ~ 10	4.3
18374 - 200	BT50 x SKS10 - 200	301.8	200	145	30	27	36	M12 x 1.75P	3 ~ 10	5.2
18374 - 250	BT50 x SKS10 - 250	351.8	250	193	30	27	40	M12 x 1.75P	3 ~ 10	5.6
18375	BT50 x SKS13 - 105	206.8	105	62	35	33	-	M12 x 1.75P	3 ~ 13	4.5
18375 - 135	BT50 x SKS13 - 135	236.8	135	92	35	33	-	M12 x 1.75P	3 ~ 13	4.7
18375 - 150	BT50 x SKS13 - 150	251.8	150	77	35	33	45	M12 x 1.75P	3 ~ 13	4.8
18375 - 165	BT50 x SKS13 - 165	266.8	165	92	35	33	45	M12 x 1.75P	3 ~ 13	4.9
18375 - 200	BT50 x SKS13 - 200	301.8	200	157	35	33	45	M12 x 1.75P	3 ~ 13	5.2
18375 - 250	BT50 x SKS13 - 250	351.8	250	207	35	33	45	M12 x 1.75P	3 ~ 13	5.7
18376	BT50 x SKS16 - 105	206.8	105	57	40	40	-	M18 x 1.5P	3 ~ 16	4.5
18378	BT50 x SKS16 - 150	251.8	150	93	40	40	52	M18 x 1.5P	3 ~ 16	4.7
18380	BT50 x SKS16 - 165	266.8	165	108	40	40	52	M18 x 1.5P	3 ~ 16	4.5
18380 - 200	BT50 x SKS16 - 200	301.8	200	157	40	40	52	M18 x 1.5P	3 ~ 16	5.5
18380 - 250	BT50 x SKS16 - 250	351.8	250	207	40	40	52	M18 x 1.5P	3 ~ 16	6.0
18382	BT50 x SKS20 - 105	206.8	105	62	48.5	48.5	-	M22 x 1.5P	3 ~ 20	4.3
18382 - 135	BT50 x SKS20 - 135	236.8	135	92	48.5	48.5	-	M22 x 1.5P	3 ~ 20	4.6
18382 - 150	BT50 x SKS20 - 150	251.8	150	107	48.5	48.5	-	M22 x 1.5P	3 ~ 20	4.7
18384	BT50 x SKS20 - 165	266.8	165	122	48.5	48.5	-	M22 x 1.5P	3 ~ 20	5.0
18384 - 200	BT50 x SKS20 - 200	301.8	200	157	48.5	48.5	-	M22 x 1.5P	3 ~ 20	5.4
18384 - 250	BT50 x SKS20 - 250	351.8	250	207	48.5	48.5	-	M22 x 1.5P	3 ~ 20	6.1
18386	BT50 x SKS25 - 105	206.8	105	62	55	55	-	M28 x 2.0P	3.0 ~ 25.4	4.5
18388	BT50 x SKS25 - 150	251.8	150	107	55	55	-	M28 x 2.0P	3.0 ~ 25.4	4.8
18390	BT50 x SKS25 - 200	301.8	200	157	55	55	-	M28 x 2.0P	3.0 ~ 25.4	6.0
18392	BT50 x SKS25 - 250	351.8	250	207	55	55	-	M28 x 2.0P	3.0 ~ 25.4	6.7

Product information:

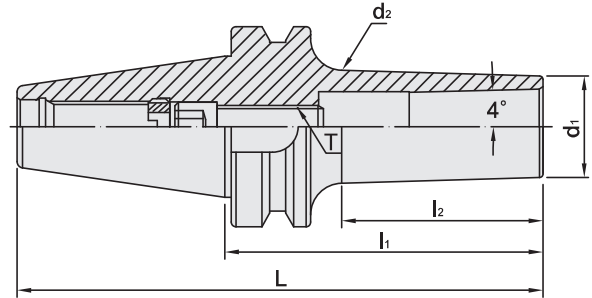
- ▶ Balance: G2.5 25,000 rpm. Higher balancing grade and revolution can be done upon request but additional charge is needed.
- ▶ AD+B type is available, please inform us when making an order.

Standard Accessory: • NUT

Collet	Nut	Pull Stud	Preset Screw	Spanner
				
P.W-25~28	P.W-47~48	P.W-54~55	P.W-82	P.W-62~67

BT / SBL SLIM-FIT COLLET CHUCK

BT / SBL 後拉式立銑刀夾頭







T W PAT NO. M274178

MODEL NO.	TYPE	L	l ₁	l ₂	d ₁	d ₂	T	TORQUE		SIZE RANGE	WEIGHT (KGS)
								N.m	lbf-ft		
18855	BT30 x SBL6 - 70	118.4	70	38	14	18.1	M6 x 1.0P	12	9	3 ~ 6	1.00
18856	BT30 x SBL6 - 100	148.4	100	68	14	21.2	M6 x 1.0P	12	9	3 ~ 6	1.25
18858	BT30 x SBL12 - 70	118.4	70	47	26	33.4	M10 x 1.5P	45	33	3 ~ 12	1.20
18860	BT30 x SBL12 - 100	148.4	100	77	26	38.1	M10 x 1.5P	45	33	3 ~ 12	1.45
18860 - 130	BT30 x SBL12 - 130	178.4	130	106	26	35.2	M10 x 1.5P	45	33	3 ~ 12	1.65
18862	BT30 x SBL20 - 80	128.4	80	55	34	37.7	M12 x 1.75P	60	44	3 ~ 20	1.20
18864	BT30 x SBL20 - 100	148.4	100	77	34	39.2	M12 x 1.75P	60	44	3 ~ 20	1.45
18866	BT40 x SBL6 - 70	135.4	70	28	14	17.1	M6 x 1.0P	12	9	3 ~ 6	1.20
18868	BT40 x SBL6 - 100	165.4	100	58	14	20.1	M6 x 1.0P	12	9	3 ~ 6	1.60
18868 - 130	BT40 x SBL6 - 130	195.4	130	88	14	23.3	M6 x 1.0P	12	9	3 ~ 6	1.80
18869	BT40 x SBL6 - 200	265.4	200	161	14	30.9	M6 x 1.0P	12	9	3 ~ 6	2.00
18871 - 100	BT40 x SBL8 - 100	165.4	100	58.7	20	26.1	M8 x 1.25P	29	21	3 ~ 8	1.25
18871 - 130	BT40 x SBL8 - 130	195.4	130	93.5	20	29.8	M8 x 1.25P	29	21	3 ~ 8	1.38
18871 - 150	BT40 x SBL8 - 150	215.4	150	113.5	20	31.8	M8 x 1.25P	29	21	3 ~ 8	1.50
18870	BT40 x SBL12 - 70	135.4	70	33	26	31	M10 x 1.5P	45	33	3 ~ 12	1.50
18872	BT40 x SBL12 - 100	165.4	100	63	26	31.6	M10 x 1.5P	45	33	3 ~ 12	1.70
18872 - 130	BT40 x SBL12 - 130	195.4	130	93	26	34.2	M10 x 1.5P	45	33	3 ~ 12	1.90
18872 - 150	BT40 x SBL12 - 150	215.4	150	113	26	36	M10 x 1.5P	45	33	3 ~ 12	2.10
18872 - 170	BT40 x SBL12 - 170	235.4	170	133	26	37.7	M10 x 1.5P	45	33	3 ~ 12	2.30
18874	BT40 x SBL20 - 70	135.4	70	33	35	38.1	M12 x 1.75P	60	44	3 ~ 20	1.50
18876	BT40 x SBL20 - 100	165.4	100	68	35	41	M12 x 1.75P	60	44	3 ~ 20	1.70
18876 - 130	BT40 x SBL20 - 130	195.4	130	98	35	43.6	M12 x 1.75P	60	44	3 ~ 20	1.90
18876 - 150	BT40 x SBL20 - 150	215.4	150	118	35	45.3	M12 x 1.75P	60	44	3 ~ 20	2.10
18876 - 170	BT40 x SBL20 - 170	235.4	170	138	35	47.1	M12 x 1.75P	60	44	3 ~ 20	2.30
18877	BT40 x SBL25 - 80	145.4	80	50.1	40	44.3	M16 x 1.5P	90	66	6 ~ 25.4	1.70
18877 - 100	BT40 x SBL25 - 100	165.4	100	70.1	40	46.1	M16 x 1.5P	90	66	6 ~ 25.4	1.90

Product information:

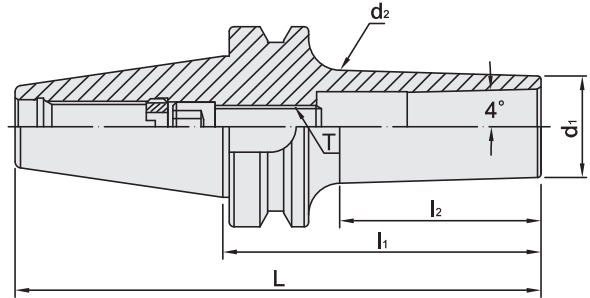
- ▶ Balance: G2.5 25,000 rpm. Higher balancing grade and revolution can be done upon request but additional charge is needed.
- ▶ AD+B type is available, please inform us when making an order.
- ▶ MAS/BT30 tool holders are without coolant supply over collars.

Collet	Pull Stud	Screw	Spanner
			
P.W-29	P.W-54~55	P.W-85	P.W-66



BT / SBL SLIM-FIT COLLET CHUCK

BT / SBL 後拉式立銑刀夾頭







T W PAT NO. M274178

MODEL NO.	TYPE	L	l ₁	l ₂	d ₁	d ₂	T	TORQUE		SIZE RANGE	WEIGHT (KGS)
								N.m	lbf-ft		
18878	BT50 x SBL6 - 70	171.8	70	17	14	15.9	M6 x 1.0P	12	9	3 ~ 6	4.00
18880	BT50 x SBL6 - 100	201.8	100	47	14	19.1	M6 x 1.0P	12	9	3 ~ 6	4.10
18880 - 150	BT50 x SBL6 - 150	251.8	150	97.7	14	24.2	M6 x 1.0P	12	9	3 ~ 6	4.30
18880 - 200	BT50 x SBL6 - 200	301.8	200	147.7	14	29.4	M6 x 1.0P	12	9	3 ~ 6	4.60
18881 - 100	BT50 x SBL8 - 100	201.8	100	47.7	20	25	M8 x 1.25P	29	21	3 ~ 8	3.78
18881 - 130	BT50 x SBL8 - 130	231.8	130	77.7	20	28.1	M8 x 1.25P	29	21	3 ~ 8	3.92
18881 - 150	BT50 x SBL8 - 150	251.8	150	97.7	20	30.2	M8 x 1.25P	29	21	3 ~ 8	4.04
18882	BT50 x SBL12 - 70	171.8	70	22	26	28.1	M10 x 1.5P	45	33	3 ~ 12	4.20
18884	BT50 x SBL12 - 100	201.8	100	52	26	30.6	M10 x 1.5P	45	33	3 ~ 12	4.30
18884 - 125	BT50 x SBL12 - 125	226.8	125	77	26	32.9	M10 x 1.5P	45	33	3 ~ 12	4.50
18884 - 150	BT50 x SBL12 - 150	251.8	150	102	26	35	M10 x 1.5P	45	33	3 ~ 12	4.80
18884 - 170	BT50 x SBL12 - 170	271.8	170	122	26	36.7	M10 x 1.5P	45	33	3 ~ 12	5.00
18886	BT50 x SBL20 - 70	171.8	70	22	35	36.9	M12 x 1.75P	60	44	3 ~ 20	4.60
18888	BT50 x SBL20 - 100	201.8	100	52	35	39.6	M12 x 1.75P	60	44	3 ~ 20	4.70
18888 - 125	BT50 x SBL20 - 125	226.8	125	77	35	41.8	M12 x 1.75P	60	44	3 ~ 20	4.90
18888 - 170	BT50 x SBL20 - 170	271.8	170	122	35	45.6	M12 x 1.75P	60	44	3 ~ 20	5.30
18888 - 200	BT50 x SBL20 - 200	301.8	200	152	35	48.3	M12 x 1.75P	60	44	3 ~ 20	5.60
18890	BT50 x SBL25 - 70	171.8	70	22.4	40	41.9	M16 x 1.5P	90	66	6 ~ 25.4	4.80
18890 -100	BT50 x SBL25 - 100	201.8	100	52.4	40	44.5	M16 x 1.5P	90	66	6 ~ 25.4	5.00

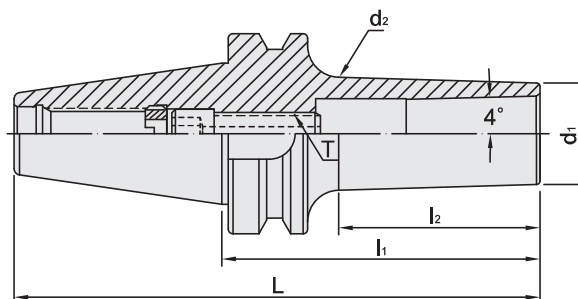
Product information:

- ▶ Balance: G2.5 25,000 rpm. Higher balancing grade and revolution can be done upon request but additional charge is needed.
- ▶ AD+B type is available, please inform us when making an order.

Collet	Pull Stud	Screw	Spanner
			
P.W-29	P.W-54~55	P.W-85	P.W-66

BT / SBLC SLIM-FIT COLLET CHUCK

BT / SBLC 後拉式立銑刀夾頭



T W PAT NO. M274178

MODEL NO.	TYPE	L	l ₁	l ₂	d ₁	d ₂	T	TORQUE		SIZE RANGE	WEIGHT (KGS)
								N.m	lbf-ft		
18855C	BT30 x SBLC6 - 70	118.4	70	38	14	18.1	M6 x 1.0P	12	9	3 ~ 6	1.00
18856C	BT30 x SBLC6 - 100	148.4	100	68	14	21.2	M6 x 1.0P	12	9	3 ~ 6	1.25
18858C	BT30 x SBLC12 - 70	118.4	70	47	26	33.4	M10 x 1.5P	45	33	3 ~ 12	1.20
18860C	BT30 x SBLC12 - 100	148.4	100	77	26	38.1	M10 x 1.5P	45	33	3 ~ 12	1.45
18860C - 130	BT30 x SBLC12 - 130	178.4	130	106	26	35.2	M10 x 1.5P	45	33	3 ~ 12	1.65
18862C	BT30 x SBLC20 - 80	128.4	80	55	34	37.7	M12 x 1.75P	60	44	3 ~ 20	1.20
18864C	BT30 x SBLC20 - 100	148.4	100	77	34	39.2	M12 x 1.75P	60	44	3 ~ 20	1.45
18866C	BT40 x SBLC6 - 70	135.4	70	28	14	17.1	M6 x 1.0P	12	9	3 ~ 6	1.20
18868C	BT40 x SBLC6 - 100	165.4	100	58	14	20.1	M6 x 1.0P	12	9	3 ~ 6	1.60
18868C - 130	BT40 x SBLC6 - 130	195.4	130	88	14	23.3	M6 x 1.0P	12	9	3 ~ 6	1.80
18869C	BT40 x SBLC6 - 200	265.4	200	161	14	30.9	M6 x 1.0P	12	9	3 ~ 6	2.00
18871C - 100	BT40 x SBLC8 - 100	165.4	100	58.7	20	26.1	M8 x 1.25P	29	21	3 ~ 8	1.25
18871C - 130	BT40 x SBLC8 - 130	195.4	130	93.5	20	29.8	M8 x 1.25P	29	21	3 ~ 8	1.38
18871C - 150	BT40 x SBLC8 - 150	215.4	150	113.5	20	31.8	M8 x 1.25P	29	21	3 ~ 8	1.50
18870C	BT40 x SBLC12 - 70	135.4	70	33	26	31	M10 x 1.5P	45	33	3 ~ 12	1.50
18872C	BT40 x SBLC12 - 100	165.4	100	63	26	31.6	M10 x 1.5P	45	33	3 ~ 12	1.70
18872C - 130	BT40 x SBLC12 - 130	195.4	130	93	26	34.2	M10 x 1.5P	45	33	3 ~ 12	1.90
18872C - 150	BT40 x SBLC12 - 150	215.4	150	113	26	36	M10 x 1.5P	45	33	3 ~ 12	2.10
18872C - 170	BT40 x SBLC12 - 170	235.4	170	133	26	37.7	M10 x 1.5P	45	33	3 ~ 12	2.30
18874C	BT40 x SBLC20 - 70	135.4	70	33	35	38.1	M12 x 1.75P	60	44	3 ~ 20	1.50
18876C	BT40 x SBLC20 - 100	165.4	100	68	35	41	M12 x 1.75P	60	44	3 ~ 20	1.70
18876C - 130	BT40 x SBLC20 - 130	195.4	130	98	35	43.6	M12 x 1.75P	60	44	3 ~ 20	1.90
18876C - 150	BT40 x SBLC20 - 150	215.4	150	118	35	45.3	M12 x 1.75P	60	44	3 ~ 20	2.10
18876C - 170	BT40 x SBLC20 - 170	235.4	170	138	35	47.1	M12 x 1.75P	60	44	3 ~ 20	2.30
18877C	BT40 x SBLC25 - 80	145.4	80	50.1	40	44.3	M16 x 1.5P	90	66	6 ~ 25.4	1.70
18877C - 100	BT40 x SBLC25 - 100	165.4	100	70.1	40	46.1	M16 x 1.5P	90	66	6 ~ 25.4	1.90

Product information:

- ▶ Balance: G2.5 25,000 rpm. Higher balancing grade and revolution can be done upon request but additional charge is needed.
- ▶ AD+B type is available, please inform us when making an order.
- ▶ MAS/BT30 tool holders are without coolant supply over collars.
- ▶ Used with SLC sealed collet and coolant through cutters.

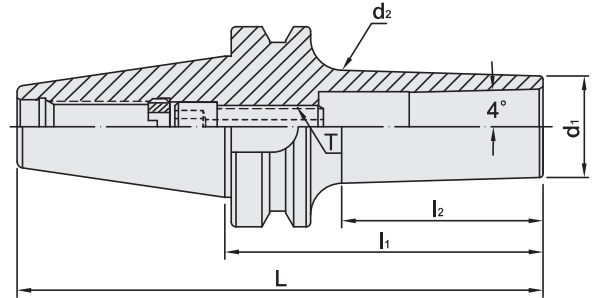
Standard Accessory: • SPANNER

Collet	Pull Stud	Screw	Spanner
P.W-30	P.W-54~55	P.W-85	P.W-66



BT / SBLC SLIM-FIT COLLET CHUCK

BT / SBLC 後拉式立銑刀夾頭



T W PAT NO. M274178

MODEL NO.	TYPE	L	l ₁	l ₂	d ₁	d ₂	T	TORQUE		SIZE RANGE	WEIGHT (KGS)
								N.m	lbf-ft		
18878C	BT50 x SBLC6 - 70	171.8	70	17	14	15.9	M6 x 1.0P	12	9	3 ~ 6	4.00
18880C	BT50 x SBLC6 - 100	201.8	100	47	14	19.1	M6 x 1.0P	12	9	3 ~ 6	4.10
18880C - 150	BT50 x SBLC6 - 150	251.8	150	97.7	14	24.2	M6 x 1.0P	12	9	3 ~ 6	4.30
18880C - 200	BT50 x SBLC6 - 200	301.8	200	147.7	14	29.4	M6 x 1.0P	12	9	3 ~ 6	4.60
18881C - 100	BT50 x SBLC8 - 100	201.8	100	47.7	20	25	M8 x 1.25P	29	21	3 ~ 8	3.78
18881C - 130	BT50 x SBLC8 - 130	231.8	130	77.7	20	28.1	M8 x 1.25P	29	21	3 ~ 8	3.92
18881C - 150	BT50 x SBLC8 - 150	251.8	150	97.7	20	30.2	M8 x 1.25P	29	21	3 ~ 8	4.04
18882C	BT50 x SBLC12 - 70	171.8	70	22	26	28.1	M10 x 1.5P	45	33	3 ~ 12	4.20
18884C	BT50 x SBLC12 - 100	201.8	100	52	26	30.6	M10 x 1.5P	45	33	3 ~ 12	4.30
18884C - 125	BT50 x SBLC12 - 125	226.8	125	77	26	32.9	M10 x 1.5P	45	33	3 ~ 12	4.50
18884C - 150	BT50 x SBLC12 - 150	251.8	150	102	26	35	M10 x 1.5P	45	33	3 ~ 12	4.80
18884C - 170	BT50 x SBLC12 - 170	271.8	170	122	26	36.7	M10 x 1.5P	45	33	3 ~ 12	5.00
18886C	BT50 x SBLC20 - 70	171.8	70	22	35	36.9	M12 x 1.75P	60	44	3 ~ 20	4.60
18888C	BT50 x SBLC20 - 100	201.8	100	52	35	39.6	M12 x 1.75P	60	44	3 ~ 20	4.70
18888C - 125	BT50 x SBLC20 - 125	226.8	125	77	35	41.8	M12 x 1.75P	60	44	3 ~ 20	4.90
18888C - 170	BT50 x SBLC20 - 170	271.8	170	122	35	45.6	M12 x 1.75P	60	44	3 ~ 20	5.30
18888C - 200	BT50 x SBLC20 - 200	301.8	200	152	35	48.3	M12 x 1.75P	60	44	3 ~ 20	5.60
18890C	BT50 x SBLC25 - 70	171.8	70	22.4	40	41.9	M16 x 1.5P	90	66	6 ~ 25.4	4.80
18890C -100	BT50 x SBLC25 - 100	201.8	100	52.4	40	44.5	M16 x 1.5P	90	66	6 ~ 25.4	5.00

Product information:

- ▶ Balance: G2.5 25,000 rpm. Higher balancing grade and revolution can be done upon request but additional charge is needed.
- ▶ AD+B type is available, please inform us when making an order.
- ▶ Used with SLC sealed collet and coolant through cutters.

Standard Accessory: • SPANNER

Collet	Pull Stud	Screw	Spanner
P.W-30	P.W-54~55	P.W-85	P.W-66

BT / MLD MULTI-LOCK MILLING CHUCK

BT / MLD 直式筒夾 銑床夾頭



T W PAT NO. M447277
 T W PAT NO. M430337
 T W PAT NO. M451185
 C N PAT NO. ZL201220749784.4
 C H PAT NO. ZL201220749942.6

Fig.1

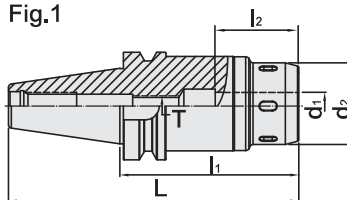
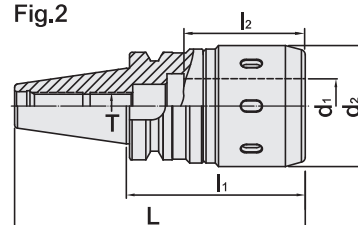


Fig.2



METRIC

MODEL NO.	TYPE	L	l ₁	l ₂	d ₁	d ₂	T	Fig	WEIGHT (KGS)
15900G	BT30 x MLD12 - 80	128.4	80	46.7	12	42	M12 x 1.75P	2	1.00
15901G	BT30 x MLD16 - 75	123.4	75	56.7	16	48	M12 x 1.75P	1	1.20
15902G	BT30 x MLD20 - 80	128.4	80	59.3	20	56.5	M12 x 1.75P	2	1.90
15904G	BT30 x MLD20 - 90	138.4	90	59.3	20	56.5	M16 x 2.0P	2	2.00
15908G	BT30 x MLD25 - 90	138.4	90	58.2	25	60	M16 x 2.0P	2	1.80
15910G	BT40 x MLD12 - 75	140.4	75	46.7	12	42	M12 x 1.75P	1	1.50
15910G - 105	BT40 x MLD12 - 105	170.4	105	46.7	12	42	M12 x 1.75P	1	2.00
15910G - 135	BT40 x MLD12 - 135	200.4	135	46.7	12	42	M12 x 1.75P	1	2.10
15911G	BT40 x MLD16 - 75	140.4	75	56.7	16	48	M12 x 1.75P	1	1.70
15911G - 105	BT40 x MLD16 - 105	170.4	105	56.7	16	48	M12 x 1.75P	1	2.30
15911G - 135	BT40 x MLD16 - 135	200.4	135	56.7	16	48	M12 x 1.75P	1	2.40
15912G	BT40 x MLD20 - 80	145.4	80	59.3	20	56.5	M16 x 2.0P	1	2.30
15914G	BT40 x MLD20 - 100	165.4	100	59.3	20	56.5	M16 x 2.0P	1	2.50
15916G	BT40 x MLD20 - 135	200.4	135	59.3	20	56.5	M16 x 2.0P	1	2.80
15918G	BT40 x MLD25 - 85	150.4	85	58.2	25	60	M16 x 2.0P	1	2.20
15920G	BT40 x MLD25 - 100	165.4	100	58.2	25	60	M16 x 2.0P	1	2.40
15922G	BT40 x MLD32 - 95	160.4	95	71.7	32	71	M16 x 2.0P	2	2.70
15924G	BT40 x MLD32 - 105	170.4	105	71.7	32	71	M16 x 2.0P	2	2.70
15926G	BT40 x MLD32 - 135	200.4	135	71.7	32	71	M16 x 2.0P	2	3.00

Features:

- ▶ Good clamping power. The clamping power of MLD32 type is around 1000 N-m.
- ▶ Runout accuracy of MLD holder body: within 0.005mm.
- ▶ Runout accuracy with collet: within 0.02mm.
- ▶ The tolerance requirement of tool shank diameter is h6.
- ▶ Internal bearing cage helps increase the clamping force.
- ▶ After fastening, the nuts and tool holders contact tight to enhance the cutting rigidity.
- ▶ Coolant options: through the center of holder or cutter. Use sealed caps and SR rings for coolant through cutter.

Product information:

- ▶ The pre-balance reaches G6.3 8,000 rpm. Higher balancing grade and revolution can be done upon request but additional charge is needed.
- ▶ AD+B type is available, please inform us when making an order.
- ▶ MAS/BT30 tool holders are without coolant supply over collars.

Standard Accessory: • NUT • SET SCREW

Collet	Sealed Cap	SR Sealed Ring	Pull Stud	Set Screw	Spanner	Spanner
P.W-32~33	P.W-52	P.W-53	P.W-54~55	P.W-82	P.W-65~66	P.W-67



BT / MLD MULTI-LOCK MILLING CHUCK

BT / MLD 直式筒夾 銑床夾頭



T W PAT NO. M447277
T W PAT NO. M430337
T W PAT NO. M451185
C N PAT NO. ZL201220749784.4
C H PAT NO. ZL201220749942.6

Fig.1

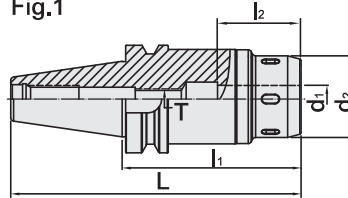
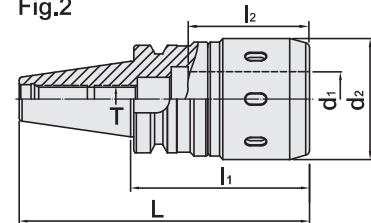


Fig.2



METRIC

MODEL NO.	TYPE	L	l ₁	l ₂	d ₁	d ₂	T	Fig	WEIGHT (KGS)
15925G	BT50 x MLD12 - 105	206.8	105	46.7	12	42	M12 x 1.75P	1	4.60
15925G - 135	BT50 x MLD12 - 135	236.8	135	46.7	12	42	M12 x 1.75P	1	5.10
15925G - 165	BT50 x MLD12 - 165	266.8	165	46.7	12	42	M12 x 1.75P	1	5.80
15927G	BT50 x MLD16 - 105	206.8	105	56.7	16	48	M12 x 1.75P	1	4.90
15927G - 135	BT50 x MLD16 - 135	236.8	135	56.7	16	48	M12 x 1.75P	1	5.60
15927G - 165	BT50 x MLD16 - 165	266.8	165	56.7	16	48	M12 x 1.75P	1	6.50
15928G	BT50 x MLD20 - 105	206.8	105	59.3	20	56.5	M16 x 2.0P	1	4.50
15930G	BT50 x MLD20 - 150	251.8	150	59.3	20	56.5	M16 x 2.0P	1	4.90
15932G	BT50 x MLD25 - 100	201.8	100	58.2	25	60	M16 x 2.0P	1	4.80
15934G	BT50 x MLD25 - 130	231.8	130	58.2	25	60	M16 x 2.0P	1	5.70
15936G - 105	BT50 x MLD32 - 105	206.8	105	71.7	32	71	M24 x 3.0P	1	5.00
15936G	BT50 x MLD32 - 135	236.8	135	71.7	32	71	M24 x 3.0P	1	5.20
15938G	BT50 x MLD32 - 165	266.8	165	71.7	32	71	M24 x 3.0P	1	6.70
15940G	BT50 x MLD42 - 115	216.8	115	84.8	42	90	M24 x 3.0P	1	5.50
15942G	BT50 x MLD42 - 130	231.8	130	84.8	42	90	M24 x 3.0P	1	6.50
15944G	BT50 x MLD42 - 165	266.8	165	84.8	42	90	M24 x 3.0P	1	7.70

Features:

- ▶ Good clamping power. The clamping power of MLD32 type is around 1000 N-m.
- ▶ Runout accuracy of MLD holder body: within 0.005mm.
- ▶ Runout accuracy with collet: within 0.02mm.
- ▶ The tolerance requirement of tool shank diameter is h6.
- ▶ Internal bearing cage helps increase the clamping force.
- ▶ After fastening, the nuts and tool holders contact tight to enhance the cutting rigidity.
- ▶ Coolant options: through the center of holder or cutter. Use sealed caps and SR rings for coolant through cutter.

Product information:

- ▶ The pre-balance reaches G6.3 8,000 rpm. Higher balancing grade and revolution can be done upon request but additional charge is needed.
- ▶ AD+B type is available, please inform us when making an order.

Standard Accessory: • NUT • SET SCREW

Collet	Sealed Cap	SR Sealed Ring	Pull Stud	Set Screw	Spanner	Spanner
P.W-32~33	P.W-52	P.W-53	P.W-54~55	P.W-82	P.W-65~66	P.W-67

BT / MLD MULTI-LOCK MILLING CHUCK

BT / MLD 直式筒夾 銑床夾頭



台灣精品 2014
TAIWAN EXCELLENCE



T W PAT NO. M447277
T W PAT NO. M430337
T W PAT NO. M451185
C N PAT NO. ZL201220749784.4
C H PAT NO. ZL201220749942.6

Fig.1

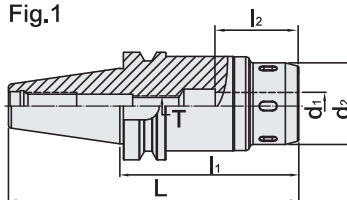
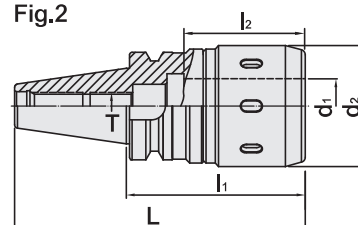


Fig.2



INCHES

MODEL NO.	TYPE	L	l ₁	l ₂	d ₁	d ₂	T	Fig	WEIGHT (KGS)
15989G	BT30 x MLD1/2" - 3.15"	5.05	3.15	1.84	0.5	1.654	M12 x 1.75P	2	1.00
15990G	BT30 x MLD5/8" - 2.95"	4.86	2.95	2.23	0.625	1.889	M12 x 1.75P	1	1.20
15991G	BT30 x MLD3/4" - 3.54"	5.449	3.54	2.34	0.75	2.224	M12 x 1.75P	2	1.90
15992G	BT30 x MLD1" - 3.54"	5.449	3.54	2.49	1	2.362	M16 x 2.0P	2	1.80
15988G	BT40 x MLD1/2" - 2.95"	5.528	2.95	1.84	0.5	1.654	M12 x 1.75P	1	1.50
15993G	BT40 x MLD5/8" - 2.95"	5.528	2.95	2.23	0.625	1.889	M12 x 1.75P	1	1.70
15994G	BT40 x MLD3/4" - 3.15"	5.724	3.15	2.34	0.75	2.224	M16 x 2.0P	1	2.30
15995G	BT40 x MLD1" - 3.15"	5.724	3.15	2.49	1	2.362	M16 x 2.0P	1	2.20
15996G	BT40 x MLD1-1/4" - 4"	6.575	4	2.8	1.25	2.795	M16 x 2.0P	2	2.70
15986G	BT50 x MLD1/2" - 4"	8.008	4	1.84	0.5	1.654	M12 x 1.75P	1	4.60
15987G	BT50 x MLD5/8" - 4"	8.008	4	2.23	0.625	1.889	M12 x 1.75P	1	4.90
15997G	BT50 x MLD3/4" - 4"	8.008	4	2.34	0.75	2.224	M16 x 2.0P	1	4.50
15998G	BT50 x MLD1" - 4.13"	8.14	4.13	2.49	1	2.362	M16 x 2.0P	1	4.80
15998G - 5.12	BT50 x MLD1"- 5.12"	9.126	5.12	2.49	1	2.362	M16 x 2.0P	1	5.70
15999G	BT50 x MLD1-1/4" - 4"	8.008	4	2.8	1.25	2.795	M24 x 3.0P	1	4.90

Features:

- ▶ Good clamping power. The clamping power of MLD32 type is around 1000 N-m.
- ▶ Runout accuracy of MLD holder body: within 0.005mm.
- ▶ Runout accuracy with collet: within 0.02mm.
- ▶ The tolerance requirement of tool shank diameter is h6.
- ▶ Internal bearing cage helps increase the clamping force.
- ▶ After fastening, the nuts and tool holders contact tight to enhance the cutting rigidity.
- ▶ Coolant options: through the center of holder or cutter. Use sealed caps and SR rings for coolant through cutter.

Product information:

- ▶ The pre-balance reaches G6.3 8,000 rpm. Higher balancing grade and revolution can be done upon request but additional charge is needed.
- ▶ AD+B type is available, please inform us when making an order.
- ▶ MAS/BT30 tool holders are without coolant supply over collars.

Standard Accessory: • NUT • SET SCREW

Collet	Sealed Cap	SR Sealed Ring	Pull Stud	Set Screw	Spanner	Spanner
P.W-32~33	P.W-52	P.W-53	P.W-54~55	P.W-82	P.W-65~66	P.W-67



BT / EOC COLLET CHUCK

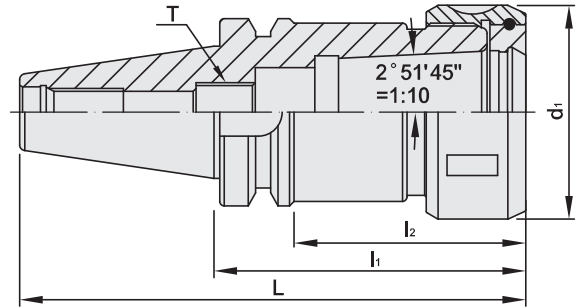


BT / EOC 立銑刀夾頭

(DIN ISO 10897)



T W PAT NO. M298033
 T W PAT NO. M311791
 J P PAT NO. 3128766
 K R PAT NO. 20-0433603
 C N PAT NO. ZL200620132661.0
 C H PAT NO. 696550
 T R PAT NO. TR 2007 02942 Y
 I T PAT NO. N.0000266731



MODEL NO.	TYPE	L	l ₁	l ₂	d ₁	T	SIZE RANGE	WEIGHT (KGS)
16001	BT30 x EOC25 - 70	118.4	70	48	60	M12 x 1.75P	3 ~ 25	1.00
16021	BT40 x EOC25 - 70	135.4	70	40.5	60	M16 x 2.0P	3 ~ 25	1.38
16023	BT40 x EOC25 - 100	165.4	100	70.5	60	M16 x 2.0P	3 ~ 25	1.74
16026	BT40 x EOC25 - 120	185.4	120	88	60	M16 x 2.0P	3 ~ 25	1.74
16027	BT40 x EOC32 - 90	155.4	90	63	72	M20 x 2.0P	4 ~ 32	2.00
16029	BT40 x EOC32 - 105	170.4	105	78	72	M20 x 2.0P	4 ~ 32	2.20
16031	BT40 x EOC32 - 120	185.4	120	93	72	M20 x 2.0P	4 ~ 32	2.45
16041	BT50 x EOC25 - 85	186.8	85	44.5	60	M16 x 2.0P	3 ~ 25	4.40
16043	BT50 x EOC25 - 100	201.8	100	59.5	60	M16 x 2.0P	3 ~ 25	4.80
16046	BT50 x EOC25 - 120	221.8	120	77	60	M16 x 2.0P	3 ~ 25	5.20
16047	BT50 x EOC32 - 90	191.8	90	44	72	M24 x 2.0P	4 ~ 32	4.60
16049	BT50 x EOC32 - 105	206.8	105	59	72	M24 x 2.0P	4 ~ 32	4.85
16051	BT50 x EOC32 - 120	221.8	120	74	72	M24 x 2.0P	4 ~ 32	5.35

Features:

- ▶ Each collet chuck has been locked with a nut, but not including a spanner and collet.
- ▶ The draw bar thread can make pull studs locked precisely and easily, including 45°, 60°, and 90°.

Product information:

- ▶ The pre-balance reaches G6.3 10,000 rpm. Higher balancing grade and revolution can be done upon request but additional charge is needed.
- ▶ AD+B type is available, please inform us when making an order.
- ▶ MAS/BT30 tool holders are without coolant supply over collars.

Standard Accessory: • NUT

Collet	Nut	Pull Stud	Preset Screw	Spanner
P.W-35	P.W-51	P.W-54~55	P.W-82	P.W-62~66

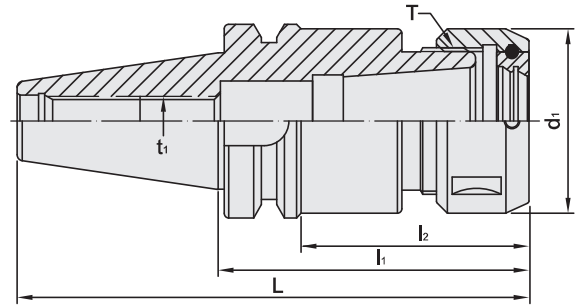
BT / TG COLLET CHUCK



BT / TG 立銑刀夾頭



T W PAT NO. M298033
 T W PAT NO. M311791
 J P PAT NO. 3128766
 K R PAT NO. 20-0433603
 C N PAT NO. ZL200620132661.0
 C H PAT NO. 696550
 T R PAT NO. TR 2007 02942 Y
 I T PAT NO. N.0000266731



MODEL NO.	TYPE	L	l ₁	l ₂	d ₁	t ₁	T	SIZE RANGE	WEIGHT (KGS)
16056	BT30 x TG75 - 70	118.4	70	47	50	M16 x 2.0P	TW 1-1/2" - 12	3 ~ 16	1.10
16058	BT30 x TG75 - 100	148.4	100	77	50	M16 x 2.0P	TW 1-1/2" - 12	3 ~ 16	1.15
16060	BT30 x TG100 - 100	148.4	100	78	60	-	TW 1-7/8" - 12	3 ~ 25	1.20
16068	BT40 x TG100 - 70	135.4	70	43	60	M16 x 2.0P	TW 1-7/8" - 12	3 ~ 25	1.20
16070	BT40 x TG100 - 100	165.4	100	73	60	M16 x 2.0P	TW 1-7/8" - 12	3 ~ 25	1.90
16072	BT40 x TG100 - 120	185.4	120	93	60	M16 x 2.0P	TW 1-7/8" - 12	3 ~ 25	2.40
16074	BT40 x TG150 - 105	170.4	105	78	82	M24 x 2.0P	TW 2-5/8" - 12	4 ~ 38	2.70
16076	BT40 x TG150 - 120	185.4	120	93	82	M24 x 2.0P	TW 2-5/8" - 12	4 ~ 38	2.90
16078	BT40 x TG150 - 135	200.4	135	108	82	M24 x 2.0P	TW 2-5/8" - 12	4 ~ 38	3.20
16088	BT50 x TG100 - 85	186.8	85	44	60	M24 x 2.0P	TW 1-7/8" - 12	3 ~ 25	3.40
16090	BT50 x TG100 - 100	201.8	100	57	60	M24 x 2.0P	TW 1-7/8" - 12	3 ~ 25	4.40
16092	BT50 x TG100 - 120	221.8	120	77	60	M24 x 2.0P	TW 1-7/8" - 12	3 ~ 25	5.10
16094	BT50 x TG150 - 90	191.8	90	50	82	M24 x 2.0P	TW 2-5/8" - 12	4 ~ 38	5.70
16096	BT50 x TG150 - 105	206.8	105	64	82	M24 x 2.0P	TW 2-5/8" - 12	4 ~ 38	6.10
16098	BT50 x TG150 - 120	221.8	120	79	82	M24 x 2.0P	TW 2-5/8" - 12	4 ~ 38	6.50

Features:

- ▶ Standard testing table is in accordance with the cutting length and precise requirements of various sizes of end mills.

Product information:

- ▶ The pre-balance reaches G6.3 10,000 rpm. Higher balancing grade and revolution can be done upon request but additional charge is needed.

Standard Accessory: • NUT

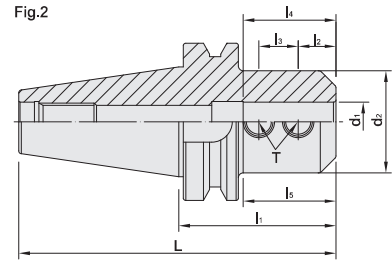
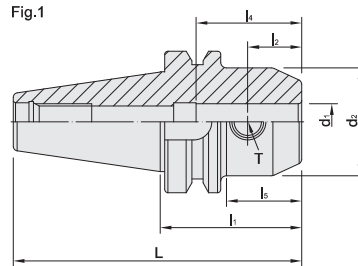
Collet	Nut	Pull Stud	Preset Screw	Spanner
P.W-36~38	P.W-51	P.W-54~55	P.W-82	P.W-66



BT / SLN SIDE LOCK END MILL HOLDER

BT / SLN 側固式立銑刀柄

[DIN 1835]





MODEL NO.	TYPE	L	l ₁	l ₂	l ₃	l ₄	l ₅	d ₁	d ₂	T	Fig	WEIGHT (KGS)
17122	BT30 x SLN6 - 60	108.4	60	18	-	35	33	6	25	M6 x 1.0P	1	0.55
17123	BT30 x SLN8 - 60	108.4	60	18	-	35	33	8	28	M8 x 1.25P	1	0.60
17124	BT30 x SLN10 - 60	108.4	60	20	-	39	35	10	35	M10 x 1.5P	1	0.70
17125	BT30 x SLN12 - 60	108.4	60	22.5	-	44	36	12	42	M12 x 1.75P	1	0.75
17126	BT30 x SLN16 - 75	123.4	75	24	-	47	53	16	48	M14 x 2.0P	1	1.05
17127	BT30 x SLN20 - 75	123.4	75	25	-	49	53	20	52	M16 x 2.0P	1	1.10
17128	BT30 x SLN25 - 90	138.4	90	24	25	58	68	25	65	M18 x 2.0P	2	1.70
17131	BT40 x SLN6 - 50	115.4	50	18	-	35	20	6	25	M6 x 1.0P	1	1.10
17131 - 150	BT40 x SLN6 - 150	215.4	150	18	-	35	113	6	25	M6 x 1.0P	1	1.32
17132	BT40 x SLN8 - 50	115.4	50	18	-	35	20	8	28	M8 x 1.25P	1	1.10
17132 - 150	BT40 x SLN8 - 150	215.4	150	18	-	35	113	8	28	M8 x 1.25P	1	1.30
17133	BT40 x SLN10 - 63	128.4	63	20	-	39	33	10	35	M10 x 1.5P	1	1.25
17133 - 150	BT40 x SLN10 - 150	215.4	150	20	-	39	113	10	35	M10 x 1.5P	1	1.40
17134	BT40 x SLN12 - 63	128.4	63	22.5	-	44	33	12	42	M12 x 1.75P	1	1.30
17134 - 150	BT40 x SLN12 - 150	215.4	150	22.5	-	44	116	12	42	M12 x 1.75P	1	1.53
17135	BT40 x SLN16 - 63	128.4	63	24	-	47	33	16	48	M14 x 2.0P	1	1.40
17135 - 150	BT40 x SLN16 - 150	215.4	150	24	-	47	120	16	48	M14 x 2.0P	1	1.60
17135 - 18	BT40 x SLN18 - 63	128.4	63	24	-	44	33	18	50	M14 x 2.0P	1	1.65
17136	BT40 x SLN20 - 63	128.4	63	25	-	49	33	20	52	M16 x 2.0P	1	1.40
17137	BT40 x SLN25 - 100	165.4	100	24	25	58	73	25	65	M18 x 2.0P	2	2.50
17138	BT40 x SLN32 - 100	165.4	100	24	28	63	73	32	72	M20 x 2.0P	2	2.75

Features:

- ▶ Internal hole tolerance: H5 (DIN-1835-B standard).
- ▶ The tolerance requirement of tool shank diameter is h6.

Product information:

- ▶ The pre-balance reaches G6.3 8,000 rpm. Higher balancing grade and revolution can be done upon request but additional charge is needed.
- ▶ AD+B type is available, please inform us when making an order.
- ▶ MAS/BT30 tool holders are without coolant supply over collars.

Pull Stud	Lock Screw
	
P.W-54~55	P.W-84

BT / SLN SIDE LOCK END MILL HOLDER

BT / SLN 側固式立銑刀柄

(DIN 1835)



Fig.1

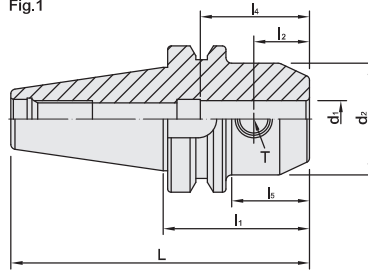
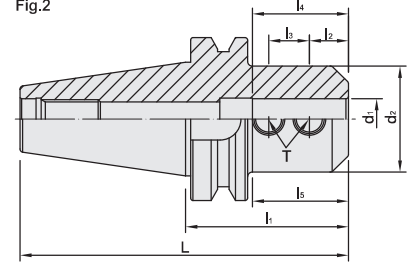


Fig.2





MODEL NO.	TYPE	L	l ₁	l ₂	l ₃	l ₄	l ₅	d ₁	d ₂	T	Fig	WEIGHT (KGS)
17151	BT50 x SLN6 - 63	164.8	63	18	-	35	20	6	25	M6 x 1.0P	1	3.80
17152	BT50 x SLN8 - 63	164.8	63	18	-	39	20	8	28	M8 x 1.25P	1	3.80
17153	BT50 x SLN10 - 63	164.8	63	20	-	39	22	10	35	M10 x 1.5P	1	3.00
17154	BT50 x SLN12 - 80	181.8	80	22.5	-	44	39	12	42	M12 x 1.75P	1	4.00
17155	BT50 x SLN16 - 80	181.8	80	24	-	47	32	16	48	M14 x 2.0P	1	4.40
17156	BT50 x SLN20 - 80	181.8	80	25	-	49	37	20	52	M16 x 2.0P	1	4.40
17157	BT50 x SLN25 - 100	201.8	100	24	25	58	59	25	65	M18 x 2.0P	2	5.10
17158	BT50 x SLN32 - 105	206.8	105	24	28	63	64	32	72	M20 x 2.0P	2	5.20
17160	BT50 x SLN40 - 115	216.8	115	30	32	75	74	40	90	M20 x 2.0P	2	6.70
17164	BT50 x SLN40 - 120	221.8	120	30	32	75	79	40	90	M20 x 2.0P	2	6.70
17162	BT50 x SLN42 - 120	221.8	120	30	32	75	79	42	90	M20 x 2.0P	2	6.70
17166	BT50 x SLN50 - 120	221.8	120	35	35	78	82	50	98	M24 x 2.0P	2	7.16
17167	BT50 x SLN50.8 - 120	221.8	120	33.1	28.58	80	82	50.8	99	M20 x 2.0P	2	6.80

Features:

- ▶ Internal hole tolerance: H5 (DIN-1835-B standard).
- ▶ The tolerance requirement of tool shank diameter is h6.

Product information:

- ▶ The pre-balance reaches G6.3 8,000 rpm. Higher balancing grade and revolution can be done upon request but additional charge is needed.
- ▶ AD+B type is available, please inform us when making an order.

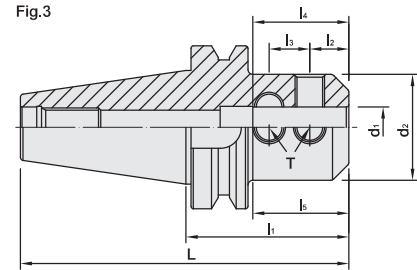
Pull Stud	Lock Screw
	
P.W-54~55	P.W-84



BT / SLN SIDE LOCK END MILL HOLDER

BT / SLN 側固式立銑刀柄

(DIN 1835)





MODEL NO.	TYPE	L	l ₁	l ₂	l ₃	l ₄	l ₅	d ₁	d ₂	T	Fig	WEIGHT (KGS)
17170	BT50 x SLN50,8 - 120	221.8	120	33.1	28.58	75	81	50.8	95	M20 x 2.0P	3	7.20
17168	BT50 x SLN63 - 120	221.8	120	33.1	28.58	80	82	63	125	M16 x 2.0P	3	6.60

Features:

- ▶ Internal hole tolerance: H5 (DIN-1835-B standard).
- ▶ The tolerance requirement of tool shank diameter is h6.

Product information:

- ▶ The pre-balance reaches G6.3 8,000 rpm. Higher balancing grade and revolution can be done upon request but additional charge is needed.
- ▶ AD+B type is available, please inform us when making an order.

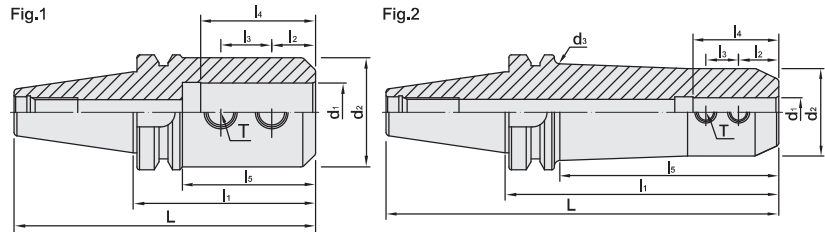
Pull Stud	Lock Screw
	
P.W-54~55	P.W-84

BT / SLN SIDE LOCK END MILL HOLDER

JIS TYPE

BT

BT / SLN 側固式立銑刀柄 [JIS 型]



MODEL NO.	TYPE	L	l ₁	l ₂	l ₃	l ₄	l ₅	d ₁	d ₂	d ₃	T	Fig	WEIGHT (KGS)
17131 - 75 - J	BT40 x SLN6 - 75JIS	140.4	75	12	10	35	45	6	25	-	M6 x 1.0P	1	1.20
17131 - 150 - J	BT40 x SLN6 - 150JIS	215.4	150	12	10	35	113	6	25	30	M6 x 1.0P	2	1.50
17132 - 75 - J	BT40 x SLN8 - 75JIS	140.4	75	14	12	35	45	8	28	-	M8 x 1.25P	1	1.20
17132 - 150 - J	BT40 x SLN8 - 150JIS	215.4	150	14	12	35	113	8	28	33	M8 x 1.25P	2	1.50
17133 - 75 - J	BT40 x SLN10 - 75JIS	140.4	75	15	14	39	45	10	35	-	M10 x 1.5P	1	1.40
17133 - 150 - J	BT40 x SLN10 - 150JIS	215.4	150	15	14	39	118	10	35	40	M10 x 1.5P	2	1.50
17134 - 75 - J	BT40 x SLN12 - 75JIS	140.4	75	20	16	44	45	12	42	-	M10 x 1.5P	1	1.50
17134 - 150 - J	BT40 x SLN12 - 150JIS	215.4	150	20	16	44	118	12	42	47	M10 x 1.5P	2	1.70
17135 - 75 - J	BT40 x SLN16 - 75JIS	140.4	75	22	18	47	45	16	48	-	M10 x 1.5P	1	1.60
17135 - 150 - J	BT40 x SLN16 - 150JIS	215.4	150	22	18	47	120	16	48	53	M10 x 1.5P	2	1.70
17136 - 90 - J	BT40 x SLN20 - 90JIS	155.4	90	25	20	55	60	20	50	-	M12 x 1.75P	1	1.75
17136 - 150 - J	BT40 x SLN20 - 150JIS	215.4	150	25	20	55	120	20	52	57	M12 x 1.75P	2	1.80
17137 - 90 - J	BT40 x SLN25 - 90JIS	155.4	90	24	25	58	60	25	50	-	M12 x 1.75P	1	1.70
17138 - J	BT40 x SLN32 - 100JIS	165.4	100	24	28	63	73	32	60	-	M16 x 2.0P	1	2.10

Features:

- ▶ Internal hole tolerance is H5.
- ▶ The tolerance requirement of tool shank diameter is h6.

Product information:

- ▶ The pre-balance reaches G6.3 8,000 rpm. Higher balancing grade and revolution can be done upon request but additional charge is needed.
- ▶ AD+B type is available, please inform us when making an order.

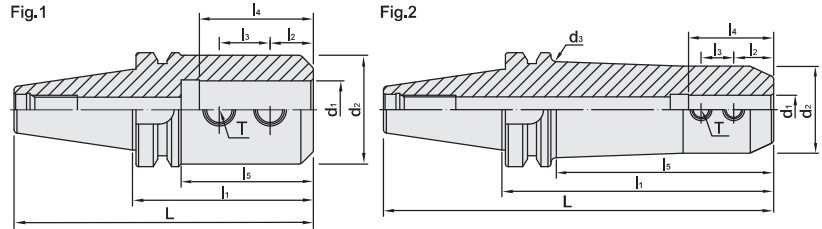
Pull Stud	Lock Screw
	
P.W-54~55	P.W-84



BT / SLN SIDE LOCK END MILL HOLDER

JIS TYPE

BT / SLN 側固式立銑刀柄 [JIS 型]





MODEL NO.	TYPE	L	l ₁	l ₂	l ₃	l ₄	l ₅	d ₁	d ₂	d ₃	T	Fig	WEIGHT (KGS)
17151 - 75 - J	BT50 x SLN6 - 75JIS	176.8	75	12	10	35	27	6	25	-	M6 x 1.0P	1	3.90
17152 - 75 - J	BT50 x SLN8 - 75JIS	176.8	75	14	12	35	27	8	28	-	M8 x 1.25P	1	3.90
17153 - 75 - J	BT50 x SLN10 - 75JIS	176.8	75	15	14	39	32	10	35	-	M10 x 1.5P	1	3.90
17154 - 90 - J	BT50 x SLN12 - 90JIS	191.8	90	20	16	44	42	12	42	-	M10 x 1.5P	1	3.90
17154 - 165 - J	BT50 x SLN12 - 165JIS	266.8	165	20	16	44	124	12	42	47	M10 x 1.5P	2	5.00
17155 - 90 - J	BT50 x SLN16 - 90JIS	191.8	90	22	18	47	42	16	48	-	M10 x 1.5P	1	3.90
17155 - 150 - J	BT50 x SLN16 - 150JIS	251.8	150	22	18	47	102	16	48	53	M10 x 1.5P	2	4.98
17155 - 165 - J	BT50 x SLN16 - 165JIS	266.8	165	22	18	47	117	16	48	53	M10 x 1.5P	2	5.00
17156 - 90 - J	BT50 x SLN20 - 90JIS	191.8	90	25	20	55	49	20	50	-	M12 x 1.75P	1	4.50
17156 - 150 - J	BT50 x SLN20 - 150JIS	251.8	150	25	20	55	102	20	50	57	M12 x 1.75P	2	5.98
17156 - 165 - J	BT50 x SLN20 - 165JIS	266.8	165	25	20	55	117	20	50	57	M12 x 1.75P	2	6.00
17156 - 210 - J	BT50 x SLN20 - 210JIS	311.8	210	25	20	55	162	20	50	57	M12 x 1.75P	2	7.00
17157 - J	BT50 x SLN25 - 100JIS	201.8	100	24	25	58	59	25	50	-	M12 x 1.75P	1	4.58
17157 - 150 - J	BT50 x SLN25 - 150JIS	251.8	150	24	25	58	102	25	50	57	M12 x 1.75P	2	5.48
17157 - 165 - J	BT50 x SLN25 - 165JIS	266.8	165	24	25	58	117	25	50	57	M12 x 1.75P	2	5.50
17157 - 210 - J	BT50 x SLN25 - 210JIS	311.8	210	24	25	58	169	25	50	57	M12 x 1.75P	2	6.00
17157 - 250 - J	BT50 x SLN25 - 250JIS	351.8	250	24	25	58	202	25	50	60	M12 x 1.75P	2	7.00
17158 - 105 - J	BT50 x SLN32 - 105JIS	206.8	105	24	28	63	64	32	60	-	M16 x 2.0P	1	4.89
17158 - 150 - J	BT50 x SLN32 - 150JIS	251.8	150	24	28	63	102	32	50	60	M16 x 2.0P	2	7.48
17158 - 165 - J	BT50 x SLN32 - 165JIS	266.8	165	24	28	63	117	32	60	65	M16 x 2.0P	2	6.22
17158 - 210 - J	BT50 x SLN32 - 210JIS	311.8	210	24	28	63	162	32	50	60	M16 x 2.0P	2	6.34
17158 - 250 - J	BT50 x SLN32 - 250JIS	351.8	250	24	28	63	207	32	50	60	M16 x 2.0P	2	7.50
17158 - 300 - J	BT50 x SLN32 - 300JIS	401.8	300	24	28	63	257	32	60	65	M16 x 2.0P	2	8.00

Features:

- ▶ Internal hole tolerance is H5.
- ▶ The tolerance requirement of tool shank diameter is h6.

Product information:

- ▶ The pre-balance reaches G6.3 8,000 rpm. Higher balancing grade and revolution can be done upon request but additional charge is needed.
- ▶ AD+B type is available, please inform us when making an order.

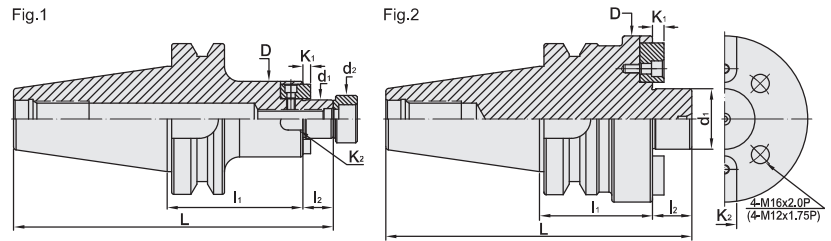
Pull Stud	Lock Screw
	
P.W-54~55	P.W-84

BT FACE MILL ARBOR

FMA TYPE

BT

BT / FMA 平面銑刀柄



INCHES



MODEL NO.	TYPE	L	l ₁	l ₂	D	d ₁	d ₂	K ₁	K ₂	Fig	WEIGHT (KGS)
16612	BT30 x FMA25.4 - 45	113.4	45	20	50	25.4	31.5	4.52	9.52	1	1.00
16613	BT30 x FMA25.4 - 60	128.4	60	20	50	25.4	31.5	4.52	9.52	1	1.30
16614	BT30 x FMA31.75 - 45	115.4	45	22	60	31.75	41	6.7	12.7	1	1.20
16614 - 50	BT30 x FMA31.75 - 50	120.4	50	22	60	31.75	41	6.7	12.7	1	1.21
16615	BT40 x FMA25.4 - 45	130.4	45	20	50	25.4	31.5	4.52	9.52	1	1.80
16616	BT40 x FMA25.4 - 60	145.4	60	20	50	25.4	31.5	4.52	9.52	1	1.45
16617	BT40 x FMA25.4 - 90	175.4	90	20	50	25.4	31.5	4.52	9.52	1	2.10
16618	BT40 x FMA25.4 - 105	190.4	105	20	50	25.4	31.5	4.52	9.52	1	2.70
16618 - 150	BT40 x FMA25.4 - 150	235.4	150	20	50	25.4	31.5	4.52	9.52	1	3.00
16619	BT40 x FMA31.75 - 45	132.4	45	22	60	31.75	41	6.7	12.7	1	1.70
16620	BT40 x FMA31.75 - 75	162.4	75	22	60	31.75	41	6.7	12.7	1	2.70
16621	BT40 x FMA31.75 - 90	177.4	90	22	60	31.75	41	6.7	12.7	1	2.65
16626	BT40 x FMA38.1 - 60	150.4	60	25	75	38.1	44.5	8.87	15.87	1	2.25
16626 - 75	BT40 x FMA38.1 - 75	165.4	75	25	75	38.1	44.5	8.87	15.87	1	2.55
16626 - 105	BT40 x FMA38.1 - 105	195.4	105	25	75	38.1	44.5	8.87	15.87	1	3.20
16626 - 150	BT40 x FMA38.1 - 150	240.4	150	25	75	38.1	44.5	8.87	15.87	1	2.85
16627	BT40 x FMA50.8 - 60	161.4	60	36	98	50.8	65	9.75	19.05	1	2.25
16639	BT50 x FMA25.4 - 45	166.8	45	20	50	25.4	31.5	4.52	9.52	1	4.40
16640	BT50 x FMA25.4 - 90	211.8	90	20	50	25.4	31.5	4.52	9.52	1	5.10
16641	BT50 x FMA25.4 - 150	271.8	150	20	50	25.4	31.5	4.52	9.52	1	6.10
16642	BT50 x FMA31.75 - 45	168.8	45	22	60	31.75	41	6.2	12.7	1	4.50
16643	BT50 x FMA31.75 - 75	198.8	75	22	60	31.75	41	6.7	12.7	1	5.70
16644	BT50 x FMA31.75 - 105	228.8	105	22	60	31.75	41	6.7	12.7	1	5.70
16645	BT50 x FMA38.1 - 45	171.8	45	25	80	38.1	44.5	8.87	15.87	1	5.20
16646	BT50 x FMA38.1 - 75	201.8	75	25	80	38.1	44.5	8.87	15.87	1	6.00
16647	BT50 x FMA50.8 - 45	182.8	45	36	98	50.8	65	9.75	19.05	1	5.70
16648	BT50 x FMA50.8 - 75	212.8	75	36	98	50.8	65	9.75	19.05	1	6.80
16649	BT50 x FMA47.62 - 75	208.8	75	32	128.75	47.62	-	12.5	25.4	2	7.90

Features:

- ▶ d₁ tolerance: h6.
- ▶ Coolant through tool holder; screw with coolant flute needs to be purchased additionally.

Product information:

- ▶ The pre-balance reaches G6.3 3,000 rpm. Higher balancing grade and revolution can be done upon request but additional charge is needed.
- ▶ AD+B type is available, please inform us when making an order.
- ▶ MAS/BT30 tool holders are without coolant supply over collars.

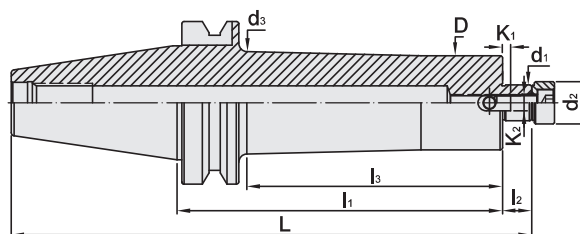
Pull Stud	Screw
	
P.W-54~55	P.W-84



BT FACE MILL ARBOR

EXTENSION TYPE

平面銑刀柄 [加長斜度柄]



INCHES



MODEL NO.	TYPE	L	l ₁	l ₂	l ₃	D	d ₁	d ₂	d ₃	K ₁	K ₂	WEIGHT (KGS)
16641 - 125BG	BT50 x FMA25.4 - 125BG	246.8	125	20	79	48	25.4	31.5	60	4.25	9.52	5.30
16641 - 150BG	BT50 x FMA25.4 - 150BG	271.8	150	20	102	48	25.4	31.5	60	4.25	9.52	6.40
16641 - 200BG	BT50 x FMA25.4 - 200BG	321.8	200	20	152	58	25.4	31.5	63	4.25	9.52	7.50
16641 - 250BG	BT50 x FMA25.4 - 250BG	371.8	250	20	202	58	25.4	31.5	63	4.25	9.52	8.60
16641 - 300BG	BT50 x FMA25.4 - 300BG	421.8	300	20	252	58	25.4	31.5	63	4.25	9.52	9.70
16641 - 350BG	BT50 x FMA25.4 - 350BG	471.8	350	20	302	58	25.4	31.5	66	4.25	9.52	10.8
16641 - 400BG	BT50 x FMA25.4 - 400BG	521.8	400	20	352	58	25.4	31.5	66	4.25	9.52	11.9
16644 - 125BG	BT50 x FMA31.75 - 125BG	248.8	125	22	82	70	31.75	41	75	6.7	12.7	5.60
16644 - 150BG	BT50 x FMA31.75 - 150BG	273.8	150	22	107	70	31.75	41	75	6.7	12.7	6.30
16644 - 175BG	BT50 x FMA31.75 - 175BG	298.8	175	22	132	70	31.75	41	75	6.7	12.7	8.30
16644 - 200BG	BT50 x FMA31.75 - 200BG	323.8	200	22	157	70	31.75	41	75	6.7	12.7	9.10
16644 - 250BG	BT50 x FMA31.75 - 250BG	373.8	250	22	207	70	31.75	41	75	6.7	12.7	10.6
16644 - 300BG	BT50 x FMA31.75 - 300BG	423.8	300	22	252	70	31.75	41	75	6.7	12.7	12.1
16644 - 350BG	BT50 x FMA31.75 - 350BG	473.8	350	22	302	70	31.75	41	75	6.7	12.7	13.6

Features:

- ▶ d₁ tolerance: h₆.
- ▶ Coolant through tool holders with special design of enlarged neck for the prolonged length type, rigidity and anti-vibration are improved.

Product information:

- ▶ The pre-balance reaches G6.3 3,000 rpm. Higher balancing grade and revolution can be done upon request but additional charge is needed.
- ▶ AD+B type is available, please inform us when making an order.

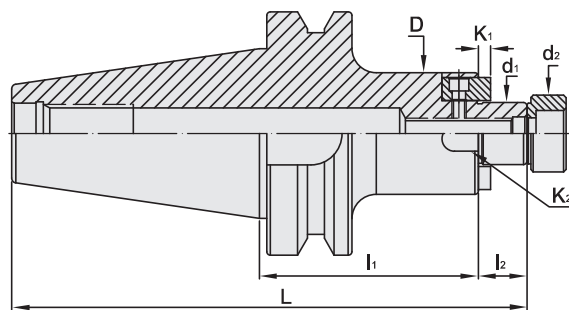
Pull Stud	Screw
	
P.W-54~55	P.W-84

BT FACE MILL ARBOR

FMB TYPE

BT

BT / FMB 平面铣刀柄



METRIC



MODEL NO.	TYPE	L	l ₁	l ₂	D	d ₁	d ₂	K ₁	K ₂	WEIGHT (KGS)
16651	BT30 x FMB22 - 45	112.4	45	19	48	22	26	4.8	10	0.82
16652	BT30 x FMB22 - 60	127.4	60	19	48	22	26	4.8	10	1.02
16654	BT30 x FMB27 - 45	113.4	45	20	60	27	31.5	5.8	12	1.06
16655	BT30 x FMB27 - 60	128.4	60	20	60	27	31.5	5.8	12	1.34
16656	BT30 x FMB32 - 45	115.4	45	22	78	32	41	6.8	14	1.46
16657	BT40 x FMB22 - 45	129.4	45	19	48	22	26	4.8	10	1.34
16658	BT40 x FMB22 - 60	144.4	60	19	48	22	26	4.8	10	1.54
16659	BT40 x FMB22 - 100	184.4	100	19	48	22	26	4.8	10	2.08
16660	BT40 x FMB27 - 45	130.4	45	20	60	27	31.5	5.8	12	1.56
16663	BT40 x FMB27 - 60	145.4	60	20	60	27	31.5	5.8	12	1.88
16664	BT40 x FMB27 - 90	175.4	90	20	60	27	31.5	5.8	12	2.30
16665	BT40 x FMB27 - 105	190.4	105	20	60	27	31.5	5.8	12	2.08
16666	BT40 x FMB32 - 45	132.4	45	22	78	32	41	6.8	14	1.96
16667	BT40 x FMB32 - 60	147.4	60	22	78	32	41	6.8	14	2.34
16668	BT40 x FMB40 - 60	150.4	60	25	80	40	48	8.3	16	2.70
16668 - 75	BT40 x FMB40 - 75	165.4	75	25	80	40	48	8.3	16	2.90
16668 - 105	BT40 x FMB40 - 105	195.4	105	25	80	40	48	8.3	16	3.32

Features:

- ▶ d1 tolerance: h6.
- ▶ Coolant through tool holder; screw with coolant flute needs to be purchased additionally.

Product information:

- ▶ The pre-balance reaches G6.3 3,000 rpm. Higher balancing grade and revolution can be done upon request but additional charge is needed.
- ▶ AD+B type is available, please inform us when making an order.
- ▶ MAS/BT30 tool holders are without coolant supply over collars.

Pull Stud	Screw
	
P.W-54~55	P.W-84



BT FACE MILL ARBOR

FMB TYPE

BT / FMB 平面銑刀柄



Fig.1

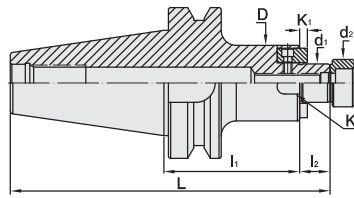
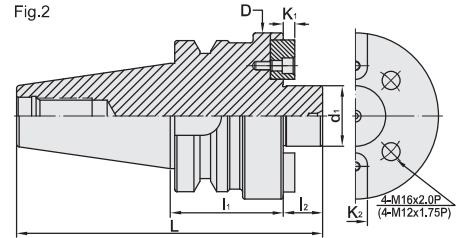


Fig.2



METRIC



MODEL NO.	TYPE	L	l ₁	l ₂	D	d ₁	d ₂	K ₁	K ₂	Fig	WEIGHT (KGS)
16669	BT50 x FMB22 - 45	165.8	45	19	48	22	26	4.8	10	1	4.10
16670	BT50 x FMB22 - 90	210.8	90	19	48	22	26	4.8	10	1	4.80
16671	BT50 x FMB22 - 150	270.8	150	19	48	22	26	4.8	10	1	6.80
16671 - 200	BT50 x FMB22 - 200	320.8	200	19	48	22	26	4.8	10	1	7.00
16671 - 250	BT50 x FMB22 - 250	370.8	250	19	48	22	26	4.8	10	1	8.00
16672	BT50 x FMB27 - 50	171.8	50	20	60	27	31.5	5.8	12	1	4.30
16673	BT50 x FMB27 - 90	211.8	90	20	60	27	31.5	5.8	12	1	5.40
16674	BT50 x FMB27 - 150	271.8	150	20	60	27	31.5	5.8	12	1	6.50
16675	BT50 x FMB27 - 200	321.8	200	20	60	27	31.5	5.8	12	1	9.50
16675 - 250	BT50 x FMB27 - 250	371.8	250	20	60	27	31.5	5.8	12	1	11.0
16676	BT50 x FMB32 - 50	173.8	50	22	78	32	41	6.8	14	1	4.60
16677	BT50 x FMB32 - 90	213.8	90	22	78	32	41	6.8	14	1	5.80
16678	BT50 x FMB40 - 50	176.8	50	25	89	40	48	8.3	16	1	5.20
16680	BT50 x FMB40 - 90	216.8	90	25	89	40	48	8.3	16	1	6.00
16681	BT50 x FMB40 - 105	231.8	105	25	89	40	48	8.3	16	1	7.20
16682	BT50 x FMB40 - 150	276.8	150	25	89	40	48	8.3	16	1	7.90
16688	BT50 x FS40F - 75	202.8	75	26	110	40	-	8.3	16	2	6.00
16690	BT50 x FS60F - 75	201.8	75	25	138	60	-	12.5	25.4	2	8.50

Features:

- ▶ d₁ tolerance: h6.
- ▶ Coolant through tool holder; screw with coolant flute needs to be purchased additionally.

Product information:

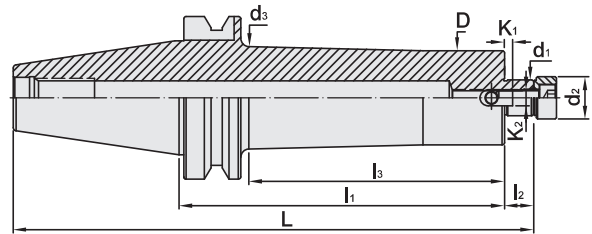
- ▶ The pre-balance reaches G6.3 3,000 rpm. Higher balancing grade and revolution can be done upon request but additional charge is needed.
- ▶ AD+B type is available, please inform us when making an order.

Pull Stud	Screw
	
P.W-54~55	P.W-84

BT FACE MILL ARBOR

EXTENSION TYPE

平面銑刀柄 [加長斜度柄]



METRIC

MODEL NO.	TYPE	L	l ₁	l ₂	l ₃	D	d ₁	d ₂	d ₃	K ₁	K ₂	WEIGHT (KGS)
16657 - 150BG	BT40 x FMB22 - 150BG	234.4	150	19	118	48	22	26	51	4.8	10	2.90
16657 - 200BG	BT40 x FMB22 - 200BG	284.4	200	19	168	48	22	26	51	4.8	10	3.60
16657 - 250BG	BT40 x FMB22 - 250BG	334.4	250	19	218	48	22	26	51	4.8	10	4.40
16671 - 150BG	BT50 x FMB22 - 150BG	270.8	150	19	107	58	22	26	62.5	4.8	10	6.80
16671 - 200BG	BT50 x FMB22 - 200BG	320.8	200	19	157	58	22	26	62.5	4.8	10	8.40
16671 - 250BG	BT50 x FMB22 - 250BG	370.8	250	19	207	58	22	26	62.5	4.8	10	9.40
16671 - 300BG	BT50 x FMB22 - 300BG	420.8	300	19	257	58	22	26	62.5	4.8	10	10.4
16671 - 350BG	BT50 x FMB22 - 350BG	470.8	350	19	307	58	22	26	62.5	4.8	10	11.4
16671 - 400BG	BT50 x FMB22 - 400BG	520.8	400	19	352	58	22	26	62.5	4.8	10	12.4
16671 - 450BG	BT50 x FMB22 - 450BG	570.8	450	19	402	58	22	26	62.5	4.8	10	13.4
16671 - 500BG	BT50 x FMB22 - 500BG	620.8	500	19	452	58	22	26	62.5	4.8	10	14.4
16674BG	BT50 x FMB27 - 150BG	271.8	150	20	107	60	27	31.5	78	5.8	12	6.90
16675BG	BT50 x FMB27 - 200BG	321.8	200	20	157	60	27	31.5	78	5.8	12	8.50
16675 - 250BG	BT50 x FMB27 - 250BG	371.8	250	20	207	60	27	31.5	78	5.8	12	9.50
16675 - 300BG	BT50 x FMB27 - 300BG	421.8	300	20	257	60	27	31.5	78	5.8	12	10.4
16675 - 350BG	BT50 x FMB27 - 350BG	471.8	350	20	307	60	27	31.5	78	5.8	12	11.4
16675 - 400BG	BT50 x FMB27 - 400BG	521.8	400	20	352	60	27	31.5	78	5.8	12	12.4
16675 - 450BG	BT50 x FMB27 - 450BG	571.8	450	20	402	60	27	31.5	78	5.8	12	13.4
16675 - 500BG	BT50 x FMB27 - 500BG	621.8	500	20	452	60	27	31.5	78	5.8	12	14.4
16677 - 150BG	BT50 x FMB32 - 150BG	273.8	150	22	107	78	32	41	85	6.8	14	7.00
16677 - 200BG	BT50 x FMB32 - 200BG	323.8	200	22	157	78	32	41	85	6.8	14	8.50
16677 - 250BG	BT50 x FMB32 - 250BG	373.8	250	22	207	78	32	41	85	6.8	14	9.50
16677 - 300BG	BT50 x FMB32 - 300BG	423.8	300	22	257	78	32	41	85	6.8	14	10.5
16677 - 350BG	BT50 x FMB32 - 350BG	473.8	350	22	307	78	32	41	85	6.8	14	11.5
16677 - 400BG	BT50 x FMB32 - 400BG	523.8	400	22	357	78	32	41	85	6.8	14	12.5
16677 - 450BG	BT50 x FMB32 - 450BG	573.8	450	22	407	78	32	41	85	6.8	14	13.5
16677 - 500BG	BT50 x FMB32 - 500BG	623.8	500	22	460	80	32	41	96	6.8	14	14.5

Features:

- ▶ d₁ tolerance: h6.
- ▶ Coolant through tool holders with special design of enlarged neck for the prolonged length type, rigidity and anti-vibration are improved.

Product information:

- ▶ The pre-balance reaches G6.3 3,000 rpm. Higher balancing grade and revolution can be done upon request but additional charge is needed.
- ▶ AD+B type is available, please inform us when making an order.

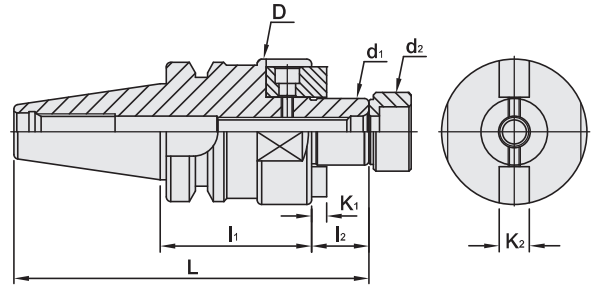
Pull Stud	Screw
	
P.W-54~55	P.W-84



BT FACE MILL ARBOR

LIGHT WEIGHT TYPE - WITH TWO FLAT SIDES

BT 平面銑刀柄 [削平兩端輕量型]





MODEL NO.	TYPE	L	l ₁	l ₂	D	d ₁	d ₂	K ₁	K ₂	WEIGHT (KGS)
16612B - 50	BT30 x FMA25,4 - 50 - B	118,4	50	20	50	25,4	31,5	4,52	9,52	1,00
16614B - 50	BT30 x FMA31,75 - 50 - B	120,4	50	22	60	31,75	41	6,7	12,7	1,00
16651B - 50	BT30 x FMB22 - 50 - B	117,7	50	19	48	22	26	4,8	10	0,82
16654B - 50	BT30 x FMB27 - 50 - B	118,4	50	20	60	27	31,5	5,8	12	1,06

Features:

- ▶ d₁ tolerance: h6.

Product information:

- ▶ The pre-balance reaches G6.3 3,000 rpm. Higher balancing grade and revolution can be done upon request but additional charge is needed.

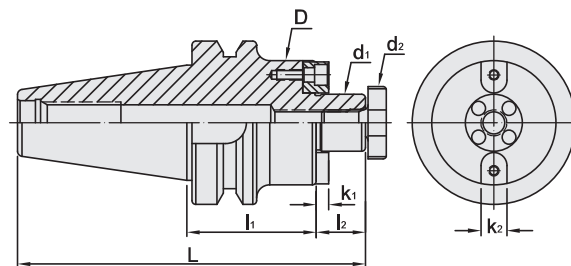
Pull Stud	Screw
	
P.W-54~55	P.W-84

BT FACE MILL ARBOR

FMC TYPE

BT

BT / FMC 平面銑刀柄



MODEL NO.	TYPE	L	l ₁	l ₂	D	d ₁	d ₂	K ₁	K ₂	WEIGHT (KGS)
10.157.16.035	BT30 x FMC16 - 35	100.4	35	17	38	16	20	5	8	0.72
10.157.22.040	BT30 x FMC22 - 40	107.4	40	19	45	22	28	4.8	10	0.80
10.157.27.040	BT30 x FMC27 - 40	109.4	40	21	60	27	35	5.8	12	1.06
11.157.16.045	BT40 x FMC16 - 45	127.4	45	17	38	16	20	5	8	1.20
11.157.22.045	BT40 x FMC22 - 45	129.4	45	19	50	22	28	4.8	10	1.34
11.157.27.045	BT40 x FMC27 - 45	131.4	45	21	60	27	35	5.8	12	1.56
11.157.32.050	BT40 x FMC32 - 50	139.4	50	24	78	32	42	6.8	14	1.96
12.157.16.050	BT50 x FMC16 - 50	168.8	50	17	40	16	20	5	8	4.00
12.157.22.060	BT50 x FMC22 - 60	180.8	60	19	50	22	28	4.8	10	4.10
12.157.27.060	BT50 x FMC27 - 60	182.8	60	21	60	27	35	5.8	12	4.30
12.157.32.060	BT50 x FMC32 - 60	185.8	60	24	78	32	42	6.8	14	4.60
12.157.40.070	BT50 x FMC40 - 70	198.8	70	27	89	40	52	8.3	16	5.20



Features:

- ▶ With four coolant holes at the end of holder.

Product information:

- ▶ The pre-balance reaches G6.3 3,000 rpm. Higher balancing grade and revolution can be done upon request but additional charge is needed.
- ▶ AD+B type is available, please inform us when making an order.
- ▶ MAS/BT30 tool holders are without coolant supply over collars.

Standard Accessory: • NUT • SPANNER

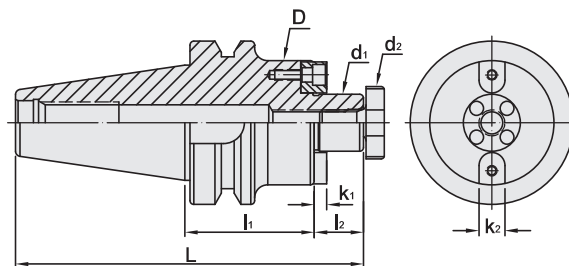
Nut	Pull Stud	Spanner
		
P.W-61	P.W-54~55	P.W-61



BT FACE MILL ARBOR

FMC TYPE

BT / FMC 平面銑刀柄



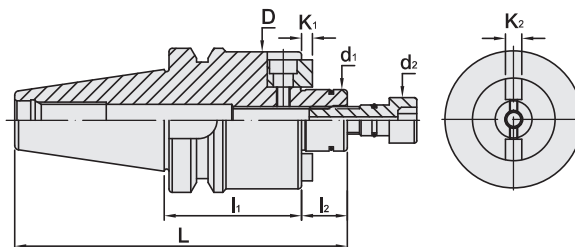
INCHES

MODEL NO.	TYPE	L	l ₁	l ₂	D	d ₁	d ₂	K ₁	K ₂	WEIGHT (KGS)
11.157.66.045	BT40 x FMC22.225 - 45	127.4	45	17	47	22.225	28	3.5	8	1.50
11.157.66.060	BT40 x FMC22.225 - 60	142.4	60	17	47	22.225	28	3.5	8	1.80
11.157.66.090	BT40 x FMC22.225 - 90	172.4	90	17	47	22.225	28	3.5	8	2.50
11.157.68.060	BT40 x FMC25.4 - 60	147.4	60	22	70	25.4	35	5	9.525	2.00
11.157.68.090	BT40 x FMC25.4 - 90	177.4	90	22	70	25.4	35	5	9.525	2.70
11.157.68.105	BT40 x FMC25.4 - 105	192.4	105	22	70	25.4	35	5	9.525	3.40
11.157.72.060	BT40 x FMC31.75 - 60	155.4	60	30	76	31.75	42	7	12.7	2.50
11.157.72.090	BT40 x FMC31.75 - 90	185.4	90	30	76	31.75	42	7	12.7	3.20
12.157.66.090	BT50 x FMC22.225 - 90	208.8	90	17	47	22.225	28	3.5	8	4.40
12.157.66.105	BT50 x FMC22.225 - 105	223.8	105	17	47	22.225	28	3.5	8	4.70
12.157.66.150	BT50 x FMC22.225 - 150	268.8	150	17	47	22.225	28	3.5	8	5.30
12.157.66.200	BT50 x FMC22.225 - 200	318.8	200	17	47	22.225	28	3.5	8	6.00
12.157.66.250	BT50 x FMC22.225 - 250	368.8	250	17	47	22.225	28	3.5	8	6.60
12.157.66.300	BT50 x FMC22.225 - 300	418.8	300	17	47	22.225	28	3.5	8	7.70
12.157.66.350	BT50 x FMC22.225 - 350	468.8	350	17	47	22.225	28	3.5	8	8.90
12.157.68.045	BT50 x FMC25.4 - 45	168.8	45	22	70	25.4	35	5	9.525	4.00
12.157.68.060	BT50 x FMC25.4 - 60	183.8	60	22	70	25.4	35	5	9.525	4.50
12.157.68.090	BT50 x FMC25.4 - 90	213.8	90	22	70	25.4	35	5	9.525	5.40
12.157.68.150	BT50 x FMC25.4 - 150	273.8	150	22	70	25.4	35	5	9.525	7.20
12.157.68.200	BT50 x FMC25.4 - 200	323.8	200	22	70	25.4	35	5	9.525	8.70
12.157.68.250	BT50 x FMC25.4 - 250	373.8	250	22	70	25.4	35	5	9.525	10.3
12.157.68.300	BT50 x FMC25.4 - 300	423.8	300	22	70	25.4	35	5	9.525	11.8
12.157.72.045	BT50 x FMC31.75 - 45	176.8	45	30	76	31.75	42	7	12.7	4.10
12.157.72.075	BT50 x FMC31.75 - 75	206.8	75	30	76	31.75	42	7	12.7	5.20
12.157.72.105	BT50 x FMC31.75 - 105	236.8	105	30	76	31.75	42	7	12.7	6.30
12.157.72.150	BT50 x FMC31.75 - 150	281.8	150	30	76	31.75	42	7	12.7	7.90
12.157.72.200	BT50 x FMC31.75 - 200	331.8	200	30	76	31.75	42	7	12.7	9.70
12.157.72.250	BT50 x FMC31.75 - 250	381.8	250	30	76	31.75	42	7	12.7	11.6
12.157.72.300	BT50 x FMC31.75 - 300	431.8	300	30	76	31.75	42	7	12.7	13.4
12.157.77.045	BT50 x FMC38.1 - 45	180.8	45	34	100	38.1	52	9	15.9	4.40
12.157.77.075	BT50 x FMC38.1 - 75	210.8	75	34	100	38.1	52	9	15.9	6.30
12.157.77.105	BT50 x FMC38.1 - 105	240.8	105	34	100	38.1	52	9	15.9	8.10
12.157.77.150	BT50 x FMC38.1 - 150	285.8	150	34	100	38.1	52	9	15.9	10.9
12.157.77.200	BT50 x FMC38.1 - 200	335.8	200	34	100	38.1	52	9	15.9	14.5
12.157.77.250	BT50 x FMC38.1 - 250	385.8	250	34	100	38.1	52	9	15.9	17.5
12.157.77.300	BT50 x FMC38.1 - 300	435.8	300	34	100	38.1	52	9	15.9	19.2

Nut	Pull Stud	Spanner
		
P.W-61	P.W-54~55	P.W-61

BT / SMA FACE MILL ARBOR

BT / SMA 平面銑刀柄



MODEL NO.	TYPE	L	l ₁	l ₂	D	d ₁	d ₂	K ₁	K ₂	WEIGHT (KGS)
11.660.22.090	BT40 x SMA22 - 90	174.4	90	19	48	22	18	4.8	10	1.90
11.660.22.105	BT40 x SMA22 - 105	189.4	105	19	48	22	18	4.8	10	1.10
11.660.22.135	BT40 x SMA22 - 135	219.4	135	19	48	22	18	4.8	10	2.20
11.660.27.090	BT40 x SMA27 - 90	175.4	90	20	60	27	20	5.8	12	2.00
11.660.27.105	BT40 x SMA27 - 105	190.4	105	20	60	27	20	5.8	12	2.10
11.660.27.135	BT40 x SMA27 - 135	220.4	135	20	60	27	20	5.8	12	2.20
11.660.32.090	BT40 x SMA32 - 90	177.4	90	22	80	32	22	6.8	14	2.40
11.660.32.105	BT40 x SMA32 - 105	192.4	105	22	80	32	22	6.8	14	2.50
11.660.32.135	BT40 x SMA32 - 135	222.4	135	22	80	32	22	6.8	14	2.60
12.660.22.090	BT50 x SMA22 - 90	210.8	90	19	48	22	18	4.8	10	4.80
12.660.22.105	BT50 x SMA22 - 105	225.8	105	19	48	22	18	4.8	10	5.00
12.660.22.135	BT50 x SMA22 - 135	255.8	135	19	48	22	18	4.8	10	5.10
12.660.27.090	BT50 x SMA27 - 90	211.8	90	20	60	27	20	5.8	12	5.40
12.660.27.105	BT50 x SMA27 - 105	226.8	105	20	60	27	20	5.8	12	5.50
12.660.27.135	BT50 x SMA27 - 135	256.8	135	20	60	27	20	5.8	12	5.60
12.660.32.090	BT50 x SMA32 - 90	213.8	90	22	80	32	22	6.8	14	5.80
12.660.32.105	BT50 x SMA32 - 105	228.8	105	22	80	32	22	6.8	14	5.90
12.660.32.135	BT50 x SMA32 - 135	258.8	135	22	80	32	22	6.8	14	6.00

Features:

- ▶ d1 tolerance: h6.
- ▶ Suitable for SRM Shell Rough Fixation Mill.
- ▶ There is more than 80% contact area that can avoid vibration effectively.

Product information:

- ▶ The pre-balance reaches G6.3 3,000 rpm. Higher balancing grade and revolution can be done upon request but additional charge is needed.
- ▶ AD+B type is available, please inform us when making an order.

Pull Stud

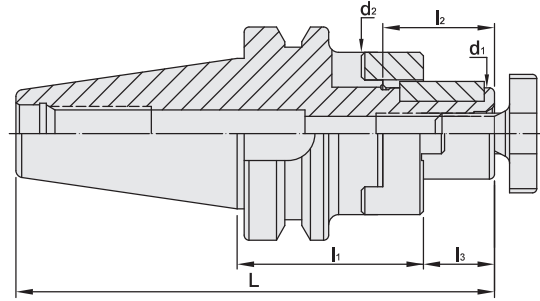


P.W-54~55



BT / CSR COMBI SHELL END MILL ARBOR

BT / CSR 聯結式銑刀柄



MODEL NO.	TYPE	L	l ₁	l ₂	l ₃	d ₁	d ₂	WEIGHT (KGS)
16352	BT30 x CSR16 - 50	115.4	50	27	17	16	32	1.40
16354	BT30 x CSR22 - 50	117.4	50	31	19	22	40	1.60
16356	BT30 x CSR27 - 55	124.4	55	33	21	27	48	1.80
16362	BT40 x CSR16 - 55	137.4	55	27	17	16	32	1.30
16364	BT40 x CSR22 - 55	139.4	55	31	19	22	40	1.60
16366	BT40 x CSR27 - 55	141.4	55	33	21	27	48	1.90
16368	BT40 x CSR32 - 60	149.4	60	38	24	32	58	2.40
16370	BT40 x CSR40 - 60	152.4	60	41	27	40	70	3.40
16374	BT50 x CSR16 - 60	178.8	60	27	17	16	32	4.40
16376	BT50 x CSR22 - 60	180.8	60	31	19	22	40	4.10
16378	BT50 x CSR27 - 60	182.8	60	33	21	27	48	4.50
16380	BT50 x CSR32 - 60	185.8	60	38	24	32	58	4.80
16382	BT50 x CSR40 - 70	198.8	70	41	27	40	70	5.20
16384	BT50 x CSR50 - 75	206.8	75	46	30	50	90	5.40

Features:

- ▶ Shank includes removable ring, nut and spanner.
- ▶ Can purchase removable ring, nut, and spanner separately.

Product information:

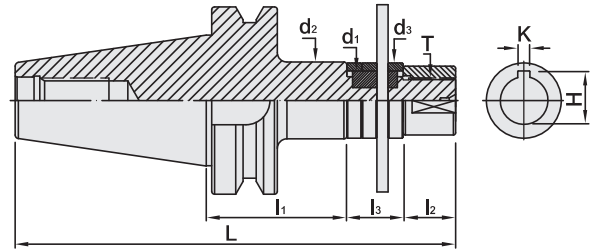
- ▶ The pre-balance reaches G6.3 3,000 rpm. Higher balancing grade and revolution can be done upon request but additional charge is needed.

Standard Accessory: • KEY • REMOVABLE RING • NUT • SPANNER

Key	Removable Ring	Nut	Pull Stud	Spanner
				
P.W-61	P.W-61	P.W-61	P.W-54~55	P.W-61

BT / SCA SIDE CUTTER ADAPTER

BT / SCA 側銑刀柄



MODEL NO.	TYPE	L	l ₁	l ₂	l ₃	d ₁	d ₂	d ₃	K	H	T	WEIGHT (KGS)
17060	BT30 x SCA10 - 60	155.4	60	12	35	10	18	18	-	-	M8 x 1.25P	0.80
17062	BT30 x SCA16 - 60	154.4	60	16	30	16	26	26	4	17.7	M14 x 1.5P	1.00
17064	BT30 x SCA22 - 60	160.4	60	22	30	22	34	34	6	24.3	M20 x 1.5P	1.20
17066	BT30 x SCA22 - 75	175.4	75	22	30	22	34	34	6	24.3	M20 x 1.5P	1.40
17068	BT40 x SCA16 - 60	171.4	60	16	30	16	26	26	4	17.7	M14 x 1.5P	1.50
17070	BT40 x SCA22 - 60	177.4	60	22	30	22	34	34	6	24.3	M20 x 1.5P	1.60
17071	BT40 x SCA22 - 75	192.4	75	22	30	22	34	34	6	24.3	M20 x 1.5P	1.70
17072	BT40 x SCA22 - 120	237.4	120	22	30	22	34	34	6	24.3	M20 x 1.5P	2.00
17073	BT40 x SCA27 - 75	198.4	75	28	30	27	41	40	7	30	M24 x 1.5P	2.10
17074	BT40 x SCA27 - 120	243.4	120	28	30	27	41	40	7	30	M24 x 1.5P	2.50
17075	BT40 x SCA32 - 90	217.4	90	32	30	32	47	46	8	35.5	M30 x 1.5P	2.60
17083	BT50 x SCA22 - 90	243.8	90	22	30	22	34	34	6	24.3	M20 x 1.5P	4.40
17084	BT50 x SCA22 - 135	288.8	135	22	30	22	34	34	6	24.3	M20 x 1.5P	4.70
17085	BT50 x SCA27 - 90	249.8	90	28	30	27	41	40	7	30	M24 x 1.5P	4.60
17086	BT50 x SCA27 - 135	294.8	135	28	30	27	41	40	7	30	M24 x 1.5P	5.00
17087	BT50 x SCA32 - 90	253.8	90	32	30	32	47	46	8	35.5	M30 x 1.5P	4.70
17088	BT50 x SCA32 - 135	298.8	135	32	30	32	47	46	8	35.5	M30 x 1.5P	5.20
17089	BT50 x SCA40 - 90	261.8	90	40	30	40	55	55	10	43.7	M36 x 2.0P	5.00
17090	BT50 x SCA40 - 135	306.8	135	40	30	40	55	55	10	43.7	M36 x 2.0P	6.00

Features:

- ▶ Nut standard DIN-2082-I.
- ▶ Bush standard DIN-2084-B.

Pull Stud

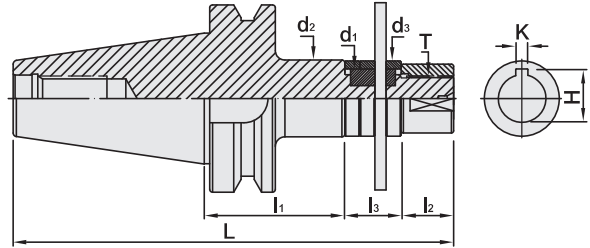


P.W-54~55



BT / SCA SIDE CUTTER ADAPTER

BT / SCA 側銑刀柄



MODEL NO.	TYPE	L	l ₁	l ₂	l ₃	d ₁	d ₂	d ₃	K	H	T	WEIGHT (KGS)
17076	BT40 x SCA22.22 - 75	192.4	75	22	30	22.22	34	34	3.18	24.6	M20 x 1.5P	1.70
17077	BT40 x SCA22.22 - 120	237.4	120	22	30	22.22	34	34	3.18	24.6	M20 x 1.5P	2.00
17078	BT40 x SCA25.4 - 75	198.4	75	28	30	25.4	41	40	6.35	28.4	M24 x 1.5P	2.00
17079	BT40 x SCA25.4 - 120	243.4	120	28	30	25.4	41	40	6.35	28.4	M24 x 1.5P	2.40
17080	BT40 x SCA31.75 - 90	217.4	90	32	30	31.75	47	46	7.93	34.8	M30 x 1.5P	2.60
17091	BT50 x SCA22.22 - 90	243.8	90	22	30	22.22	34	34	3.18	24.6	M20 x 1.5P	4.40
17092	BT50 x SCA22.22 - 135	288.8	135	22	30	22.22	34	34	3.18	24.6	M20 x 1.5P	4.70
17093	BT50 x SCA25.4 - 90	249.8	90	28	30	25.4	41	40	6.35	28.4	M24 x 1.5P	4.50
17094	BT50 x SCA25.4 - 135	294.8	135	28	30	25.4	41	40	6.35	28.4	M24 x 1.5P	4.90
17095	BT50 x SCA31.75 - 90	253.8	90	32	30	31.75	47	46	7.93	34.8	M30 x 1.5P	4.70
17096	BT50 x SCA31.75 - 135	298.8	135	32	30	31.75	47	46	7.93	34.8	M30 x 1.5P	5.20
17097	BT50 x SCA38.1 - 90	261.8	90	40	30	38.1	55	55	9.525	42.4	M36 x 2.0P	4.90
17098	BT50 x SCA38.1 - 135	306.8	135	40	30	38.1	55	55	9.525	42.4	M36 x 2.0P	5.90

Features:

- ▶ Nut standard DIN-2082-I.
- ▶ Bush standard DIN-2084-B.

Pull Stud



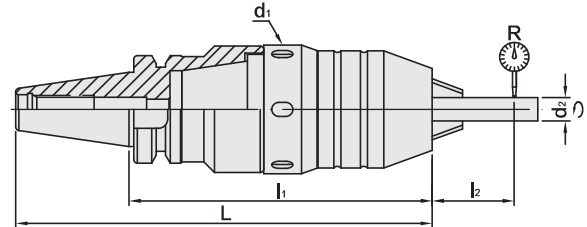
P.W-54~55

BT / SPH DRILL CHUCK ADAPTER

INTEGRATED TYPE

BT

BT / SPH 直結式鑽夾頭



MODEL NO.	TYPE	L	l ₁	l ₂	d ₁	d ₂	R	WEIGHT (KGS)
16420	BT30 x SPH8 - 115	163.4	115	55	42	6	0.04	2.18
16422	BT30 x SPH13 - 130	178.4	130	75	54	8	0.04	2.45
16430	BT40 x SPH8 - 90	155.4	90	55	42	6	0.04	2.45
16432	BT40 x SPH13 - 105	170.4	105	75	54	8	0.04	2.33
16434	BT40 x SPH13 - 120	185.4	120	75	54	8	0.04	2.63
16440	BT50 x SPH8 - 100	201.8	100	55	42	6	0.04	4.93
16442	BT50 x SPH13 - 115	216.8	115	75	54	8	0.04	5.13
16444	BT50 x SPH13 - 135	236.8	135	75	54	8	0.04	5.43
16446	BT50 x SPH13 - 150	251.8	150	75	54	8	0.04	5.73
16448	BT50 x SPH16 - 128	229.8	128	80	62	10	0.04	5.93

Features:

- ▶ The adapter has a taper design to assemble with drill chuck and then lock with a screw, ensuring to have better stability and drill chuck would not fall off.
- ▶ Used for drilling & tapping.
- ▶ The clamping capacity of SPH8 is 1~8mm.
- ▶ The clamping capacity of SPH13 is 1~13mm.
- ▶ The clamping capacity of SPH16 is 3~16mm.

Product information:

- ▶ The pre-balance reaches G6.3 8,000 rpm. Higher balancing grade and revolution can be done upon request but additional charge is needed.

Standard Accessory: • SPANNER

Pull Stud

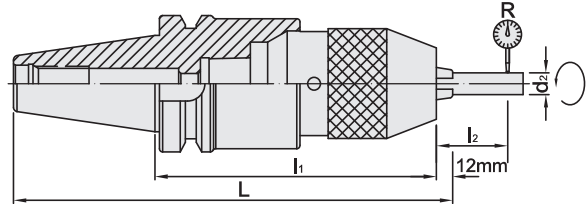


P.W-54~55



BT / SPU DRILL CHUCK ADAPTER

BT / SPU 直結式鑽夾頭



MODEL NO.	TYPE	L	l ₁	l ₂	d ₁	d ₂	R	WEIGHT (KGS)
16452	BT30 x SPU8 - 80	140.4	80	55	37	6	0.04	0.72
16456	BT30 x SPU13 - 110	170.4	110	75	50	13	0.04	1.85
16458	BT30 x SPU16 - 115	175.4	115	80	57	16	0.04	2.18
16462	BT40 x SPU8 - 85	162.4	85	55	37	6	0.04	1.60
16466	BT40 x SPU13 - 100	177.4	100	75	50	13	0.04	2.00
16468	BT40 x SPU16 - 105	182.4	105	80	57	16	0.04	2.20
16472	BT50 x SPU8 - 90	203.8	90	55	37	6	0.04	4.16
16476	BT50 x SPU13 - 100	213.8	100	75	50	13	0.04	4.70
16477	BT50 x SPU13 - 120	233.8	120	75	50	13	0.04	5.00
16479	BT50 x SPU13 - 180	293.8	180	75	50	13	0.04	5.80
16480	BT50 x SPU16 - 105	218.8	105	80	57	16	0.04	5.03
16481	BT50 x SPU16 - 190	303.8	190	80	57	16	0.04	6.00

Features:

- ▶ The adapter has a taper design to assemble with drill chuck and then lock with a screw, ensuring to have better stability and drill chuck would not fall off.
- ▶ Used for drilling.
- ▶ The clamping capacity of SPU8 is 1~8mm.
- ▶ The clamping capacity of SPU13 is 1~13mm.
- ▶ The clamping capacity of SPU16 is 3~16mm.

Product information:

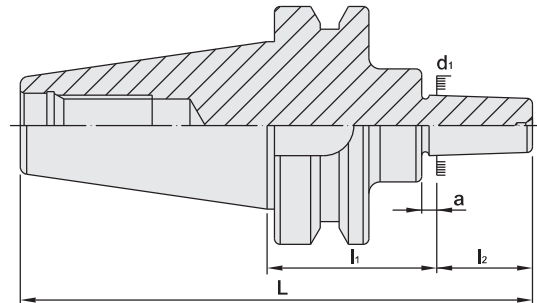
- ▶ The pre-balance reaches G6.3 8,000 rpm. Higher balancing grade and revolution can be done upon request but additional charge is needed.

Standard Accessory: • SPANNER

Pull Stud	Spanner
	
P.W-54~55	P.W-66

BT DRILL CHUCK ARBOR

BT 鑽夾頭刀柄



MODEL NO.	TYPE	L	l ₁	l ₂	d ₁	a	WEIGHT (KGS)
16502	BT30 x JTA2 - 45	115.625	45	22.225	14.199	4	0.60
16504	BT30 x JTA33 - 45	118.8	45	25.4	15.85	4	0.75
16506	BT30 x JTA6 - 45	118.8	45	25.4	17.17	4	0.60
16522	BT40 x JTA2 - 45	136.625	45	22.225	14.199	4	1.30
16523	BT40 x JTA33 - 45	135.8	45	25.4	15.85	4	1.30
16524	BT40 x JTA6 - 45	135.8	45	25.4	17.17	4	1.20
16525	BT40 x JTA6 - 105	195.8	105	25.4	17.17	4	1.65
16542	BT50 x JTA2 - 45	169.025	45	22.225	14.199	4	4.10
16543	BT50 x JTA33 - 45	172.2	45	25.4	15.85	4	4.00
16544	BT50 x JTA6 - 45	172.2	45	25.4	17.17	4	4.20
16545	BT50 x JTA6 - 105	232.2	105	25.4	17.17	4	4.60
16552	BT30 x B10 - 45	107.9	45	14.5	10.094	3	0.60
16553	BT30 x B12 - 45	111.9	45	18.5	12.065	4	0.85
16554	BT30 x B16 - 45	117.4	45	24	15.733	5	0.60
16572	BT40 x B10 - 45	124.9	45	14.5	10.094	3	1.45
16573	BT40 x B12 - 45	128.9	45	18.5	12.065	4	1.40
16574	BT40 x B16 - 45	134.4	45	24	15.733	5	1.45
16575	BT40 x B16 - 90	179.4	90	24	15.733	5	1.70
16576	BT40 x B18 - 45	142.4	45	32	17.78	5	1.50
16577	BT40 x B18 - 90	187.4	90	32	17.78	5	1.80
16592	BT50 x B10 - 45	161.3	45	14.5	10.094	3	3.60
16593	BT50 x B12 - 45	165.3	45	18.5	12.065	4	3.60
16594	BT50 x B12 - 105	225.3	105	18.5	12.065	4	5.50
16595	BT50 x B16 - 45	170.8	45	24	15.733	5	5.10
16596	BT50 x B16 - 105	230.8	105	24	15.733	5	5.50
16597	BT50 x B18 - 45	178.8	45	32	17.78	5	4.30
16598	BT50 x B18 - 105	238.8	105	32	17.78	5	5.60

Features:

► For drill chuck according to DIN 238.

Product information:

► The pre-balance reaches G6.3 10,000 rpm. Higher balancing grade and revolution can be done upon request but additional charge is needed.

Keyless Drill Chuck Pull Stud



P.W-77

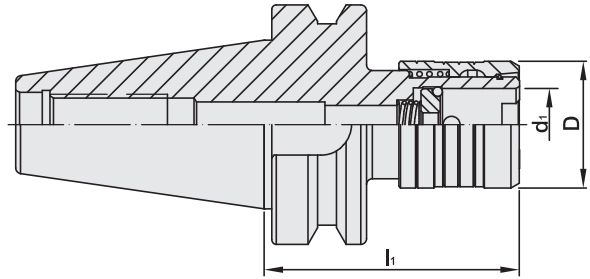


P.W-54~55





QUICK CHANGE TAPPING CHUCK

快換式伸縮 / 扭力 攻牙夾頭

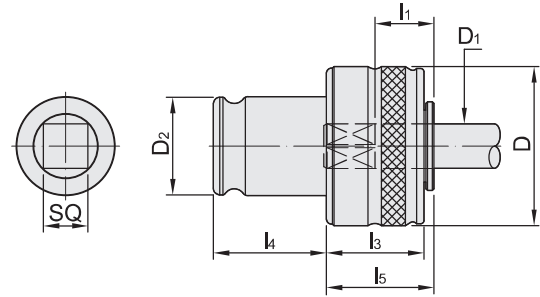


MODEL NO.	TYPE	TAPPING COLLET	TAPPING CAPACITY	LENGTH COMP.		l ₁	D	d ₁	WEIGHT (KGS)
				COMP	EXP				
17711 - 68	BT30 x 312 - 68	TCS - 1B	M3 - M14	7.5	7.5	68	36	19	0.64
17715 - 73	BT40 x 312 - 73	TCS - 1B	M3 - M14	7.5	7.5	73	36	19	1.25
17715 - 135	BT40 x 312 - 135	TCS - 1B	M3 - M14	15	20	135	46	19	2.00
17716 - 94	BT40 x 822 - 94	TCS - 2B	M8 - M24	12.5	12.5	94	53	31	-
17716 - 165	BT40 x 822 - 165	TCS - 2B	M8 - M24	15	20	165	58	31	-
17718 - 157	BT40 x 1638 - 157	TCS - 3B	M14 - M36	20	20	157	78	48	-
17721 - 84	BT50 x 312 - 84	TCS - 1B	M3 - M14	7.5	7.5	84	36	19	-
17721 - 135	BT50 x 312 - 135	TCS - 1B	M3 - M14	15	20	135	46	19	4.48
17722 - 103	BT50 x 822 - 103	TCS - 2B	M8 - M24	12.5	12.5	103	53	31	4.50
17722 - 165	BT50 x 822 - 165	TCS - 2B	M8 - M24	15	15	165	58	31	6.45
17724 - 142	BT50 x 1638 - 142	TCS - 3B	M14 - M36	20	20	142	78	48	6.06
17724 - 200	BT50 x 1638 - 200	TCS - 3B	M14 - M36	20	20	200	75	48	-

Tapping Collet	Pull Stud
	
P.A-49	P.W-54~55

QUICK CHANGE TAPPING COLLET

快換式 扭力 攻牙筒夾



MODEL NO.	TYPE	TAPPING CAPACITY	D	D ₂	l ₁	l ₃	l ₄	l ₅	WEIGHT (KGS)
17730	TCS - 1B	M3 - M12, 1/4" ~ 1/2"	32	19	17	25	21.5	25	0.40
17750	TCS - 2B	M8 - M22, 3/8" ~ 7/8"	50	31	30	31	35	33	0.60
17770	TCS - 3B	M14 - M36, 5/8" ~ 1-1/4"	72	48	44	41	55.5	45	1.30

D ₁	TAP	SQ	STANDARD	D ₁	TAP	SQ	STANDARD	D ₁	TAP	SQ	STANDARD	D ₁	TAP	SQ	STANDARD
2.24	M3	1.8	ISO-529	6	M5	4.9	DIN-352	10.5	M14	8	JIS	19	M25	15	JIS
2.5	M3.5	2.1	DIN-376	6	M5	4.9	DIN-371	10.5	M15	8	JIS	20	M26	15	JIS
2.5	M3.5	2	ISO-529	6	M6	4.5	JIS	11	M14	9	DIN-352	20	M27	15	JIS
2.8	M4	2.1	DIN-376	6	M6	4.9	DIN-352	11	M14	9	DIN-376	20	M27	16	DIN-376
3.15	M3	2.5	ISO-529	6	M6	4.9	DIN-371	11.2	M14	9	ISO-529	20	M27	16	ISO-529
3.15	M4	2.5	ISO-529	6	M8	4.9	DIN-352	12	M16	9	DIN-352	20	M30	16	ISO-529
3.5	M3	2.7	DIN-352	6	M8	4.9	DIN-376	12	M16	9	DIN-376	21	M28	17	JIS
3.5	M3	2.7	DIN-371	6.2	M7	5	JIS	12.5	M16	10	JIS	22	M30	18	DIN-352
3.5	M5	2.7	DIN-376	6.2	M8	5	JIS	12.5	M16	10	ISO-529	22	M30	18	DIN-376
3.55	M3.5	2.8	ISO-529	6.3	M6	5	ISO-529	13	M17	10	JIS	22.4	M33	18	ISO-529
3.55	M4.5	2.8	ISO-529	6.3	M8	5	ISO-529	14	M18	11	JIS	23	M30	17	JIS
4	M3	3.2	JIS	7	M9	5.5	JIS	14	M18	11	DIN-352	24	M32	19	JIS
4	M3.5	3	DIN-352	7	M10	5.5	JIS	14	M18	11	DIN-376	25	M33	19	JIS
4	M3.5	3	DIN-371	7	M10	5.5	DIN-352	14	M18	11.2	ISO-529	25	M33	20	DIN-352
4	M4	3.15	ISO-529	7	M10	5.5	DIN-376	14	M20	11.2	ISO-529	25	M33	20	DIN-376
4	M5	3.15	ISO-529	8	M8	6.2	DIN-371	15	M20	12	JIS	25	M36	20	ISO-529
4.5	M4	3.14	DIN-352	8	M8	6.3	ISO-529	16	M20	12	DIN-376	26	M34	21	JIS
4.5	M4	3.4	DIN-371	8	M10	6.3	ISO-529	16	M22	12.5	ISO-529	26	M35	21	JIS
4.5	M6	3.4	DIN-376	8	M11	6	JIS	17	M22	13	JIS	28	M36	21	JIS
4.5	M6	3.55	ISO-529	8.5	M12	6.5	JIS	18	M22	14.5	DIN-374	28	M36	22	DIN-352
5	M4	4	JIS	9	M12	7	DIN-352	18	M22	14.5	DIN-376	28	M36	22	DIN-376
5	M4.5	4	JIS	9	M12	7	DIN-376	18	M24	14.5	DIN-352	28	M38	21	JIS
5	M5	4	ISO-529	9	M12	7.1	ISO-529	18	M24	14.5	DIN-376				
5.5	M5	4.5	JIS	10	M10	8	DIN-371	18	M24	14	ISO-529				
5.5	M5.5	4.5	JIS	10	M10	8	ISO-529	19	M24	15	JIS				

INCHES

D ₁	TAP	SQ	D ₁	TAP	SQ	D ₁	TAP	SQ
0.141"	1/8" or #6	0.110"	0.381"	3/8"	0.286"	0.687"	1/2"PT	0.515"
0.168"	5/32" or #8	0.131"	0.429"	9/16"	0.322"	0.697"	7/8"	0.523"
0.194"	3/16" or #10	0.152"	0.437"	1/8"PT	0.328"	0.700"	3/8"PT	0.531"
0.220"	7/32" or #12	0.165"	0.480"	5/8"	0.360"	0.760"	15/16"	0.570"
0.255"	1/4"	0.191"	0.542"	11/16"	0.406"	0.800"	1"	0.600"
0.318"	5/16"	0.238"	0.562"	1/4"PT	0.421"	0.896"	1-1/8"	0.669"
0.323"	7/16"	0.242"	0.590"	3/4"	0.442"	1.021"	1-1/4"	0.748"
0.367"	1/2"	0.275"	0.652"	13/16"	0.489"	1.108"	1-3/8"	0.827"

Features:

- ▶ Please inform the sizes of D1 and SQ when making an order. ▶ Has a range of torsion and can be set in advance.
- ▶ The harder materials of tools, the stronger torsion is needed.



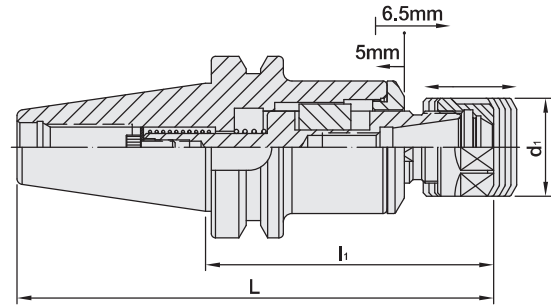
BT / ETP EXPANSION ER TAPPER



BT / ETP 伸縮 ER 攻牙器



T W PAT NO. M298033
 T W PAT NO. M311791
 J P PAT NO. 3128766
 J P PAT NO. 3200356
 K R PAT NO. 20-0433603
 C N PAT NO. ZL200620132661.0
 C H PAT NO. 696550
 T R PAT NO. TR 2007 02942 Y
 I T PAT NO. N.0000266731



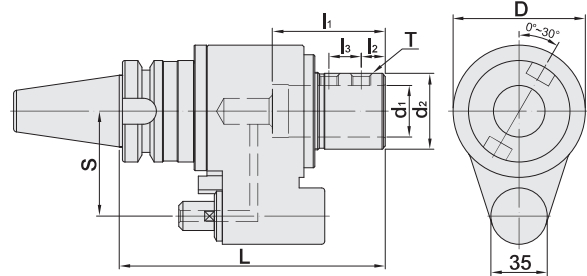
MODEL NO.	TYPE	L	li	di	COLLET	CAPACITY	WEIGHT (KGS)
18701	BT30 x ETP16A - 75	123.4	75	28	ER16	M3 - M10	0.55
18703	BT30 x ETP16A - 90	138.4	90	28	ER16	M3 - M10	0.60
18705	BT30 x ETP20A - 75	123.4	75	34	ER20	M3 - M17	0.58
18707	BT30 x ETP20A - 90	138.4	90	34	ER20	M3 - M17	0.62
18711	BT40 x ETP16A - 120	185.4	120	28	ER16	M3 - M10	1.65
18713	BT40 x ETP16A - 150	215.4	150	28	ER16	M3 - M10	1.85
18715	BT40 x ETP20A - 100	165.4	100	34	ER20	M3 - M17	1.65
18717	BT40 x ETP20A - 150	215.4	150	34	ER20	M3 - M17	1.90
18719	BT40 x ETP20M - 200	265.4	200	28	ER20	M3 - M17	2.15
18721	BT40 x ETP32 - 120	185.4	120	50	ER32	M3 - M27	2.10
18731	BT50 x ETP16A - 120	221.8	120	28	ER16	M3 - M10	4.30
18733	BT50 x ETP16A - 150	251.8	150	28	ER16	M3 - M10	4.50
18735	BT50 x ETP20A - 100	201.8	100	34	ER20	M3 - M17	4.30
18737	BT50 x ETP20A - 150	251.8	150	34	ER20	M3 - M17	4.60
18739	BT50 x ETP20M - 200	301.8	200	28	ER20	M3 - M17	4.70
18741	BT50 x ETP32 - 120	221.8	120	50	ER32	M3 - M27	4.65

Standard Accessory: • NUT

Collet	Nut	Pull Stud	Preset Screw	Spanner
P.W-6~9,17~22	P.W-42	P.W-54~55	P.W-82	P.W-62~65

BT / OSL SIDE LOCK OIL HOLE HOLDER

BT / OSL 側固式油路刀把







MODEL NO.	TYPE	L	l ₁	l ₂	l ₃	D	d ₁	d ₂	S	T	WEIGHT (KGS)
18001	BT40 x OSL16 - 165	165	58	25	-	82	16	46.5	65	M12 x 1.75P	3.10
18003	BT40 x OSL20 - 165	165	60	25	-	82	20	46.5	65	M12 x 1.75P	3.50
18005	BT40 x OSL25 - 165	165	66	15	20	82	25	46.5	65	M12 x 1.75P	3.50
18007	BT40 x OSL32 - 165	165	70	15	20	82	32	47	65	M12 x 1.75P	5.20
18002	BT40 x OSL16 - 165S	165	48	25	-	82	16	46.5	60	M12 x 1.75P	3.10
18004	BT40 x OSL20 - 165S	165	50	25	-	82	20	46.5	60	M12 x 1.75P	3.50
18006	BT40 x OSL25 - 165S	165	56	15	20	82	25	46.5	60	M12 x 1.75P	3.50
18008	BT40 x OSL32 - 165S	165	60	15	20	82	32	47	60	M12 x 1.75P	5.20
18009	BT50 x OSL16 - 165	165	58	24	-	98	16	56	80	M14 x 2.0P	7.00
18011	BT50 x OSL20 - 165	165	60	25	-	98	20	56	80	M12 x 1.75P	7.50
18013	BT50 x OSL25 - 165	165	70	15	20	98	25	56	80	M16 x 2.0P	7.50
18015	BT50 x OSL32 - 165	165	70	15	20	98	32	56	80	M16 x 2.0P	7.80
18017	BT50 x OSL40 - 170	170	70	15	25	105	40	56	80	M14 x 2.0P	8.50
18019	BT50 x OSL16 - 165M	165	48	25	-	98	16	56	82	M14 x 2.0P	7.10
18021	BT50 x OSL20 - 165M	165	50	25	-	98	20	56	82	M12 x 1.75P	7.60
18023	BT50 x OSL25 - 165M	165	56	15	20	98	25	56	82	M16 x 2.0P	7.70
18025	BT50 x OSL32 - 165M	165	60	15	20	98	32	56	82	M16 x 2.0P	7.80
18027	BT50 x OSL40 - 170M	170	62	15	25	105	40	56	82	M14 x 2.0P	8.50
18029	BT50 x OSL16 - 165L	165	48	25	-	98	16	56	85	M14 x 2.0P	7.20
18031	BT50 x OSL20 - 165L	165	50	25	-	98	20	56	85	M12 x 1.75P	7.80
18033	BT50 x OSL25 - 165L	165	56	15	20	98	25	56	85	M16 x 2.0P	7.80
18035	BT50 x OSL32 - 165L	165	60	15	20	98	32	56	85	M16 x 2.0P	8.00
18037	BT50 x OSL40 - 170L	170	62	15	25	105	40	56	85	M14 x 2.0P	8.70

Features:

- ▶ Internal hole tolerance is H5.
- ▶ The tolerance requirement of tool shank diameter is h6.
- ▶ Used for machines w/o center or side coolant and achieve coolant through tools.

Product information:

- ▶ Water pressure up to 7 kgf/cm².
- ▶ Max. revolution: 3,000 rpm.

Straight Sleeve	Fixed Block	Pull Stud	Lock Screw
			
P.W-77	P.S-35	P.W-54~55	P.W-84



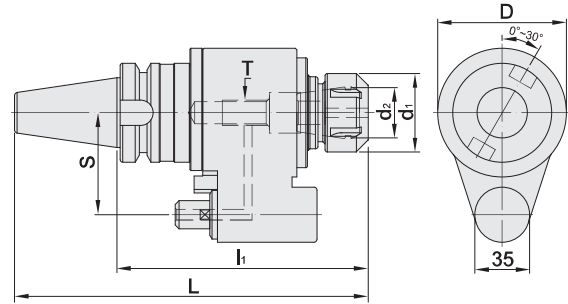
BT / OHER OIL HOLE COLLET CHUCK



BT / OHER 油路刀把



T W PAT NO. M298033
 T W PAT NO. M311791
 J P PAT NO. 3128766
 J P PAT NO. 3200356
 K R PAT NO. 20-0433603
 C N PAT NO. ZL200620132661.0
 C H PAT NO. 696550
 T R PAT NO. TR 2007 02942 Y
 I T PAT NO. N.0000266731



MODEL NO.	TYPE	L	I ₁	D	d ₁	d ₂ ER	S	T	WEIGHT (KGS)
18202	BT40 x OHER16 - 160	225.4	160	82	28	16	65	M10	3.80
18204	BT40 x OHER20 - 160	225.4	160	82	34	20	65	M12	4.10
18206	BT40 x OHER25 - 160	225.4	160	82	42	25	65	M16	4.30
18208	BT40 x OHER32 - 160	225.4	160	82	50	32	65	M16	4.50
18210	BT50 x OHER16 - 160	261.8	160	98	28	16	80	M10	7.00
18212	BT50 x OHER20 - 160	261.8	160	98	34	20	80	M12	7.10
18214	BT50 x OHER25 - 160	261.8	160	98	42	25	80	M16	7.20
18216	BT50 x OHER32 - 160	261.8	160	98	50	32	80	M16	7.30
18218	BT50 x OHER40 - 160	261.8	160	98	63	40	80	M20	7.50

Features:

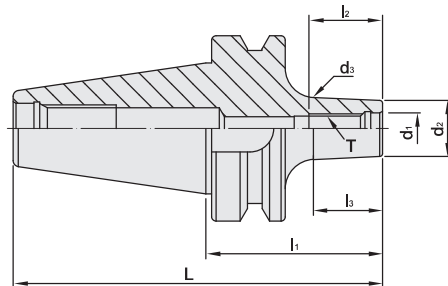
- ▶ Internal hole tolerance is H5.
- ▶ The tolerance requirement of tool shank diameter is h6.
- ▶ Used for machines w/o center or side coolant and achieve coolant through tools.

Standard Accessory: • NUT

Collet	Nut	Fixed Block	Pull Stud	Preset Screw	Spanner
P.W-6~14	P.W-42,45	P.S-35	P.W-54~55	P.W-82	P.W-62~65

BT / SOM SCREWED END MILL HOLDER

BT / SOM 螺紋鎖固式刀桿



MODEL NO.	TYPE	L	l ₁	l ₂	l ₃	d ₁	d ₂	d ₃	T	WEIGHT (KGS)
19205	BT40 x SOM6 - 60	125.4	60	25	23.4	6.5	13	15.1	M6 x 1.0P	1.10
19206	BT40 x SOM8 - 60	125.4	60	25	23.4	8.5	15	17.1	M8 x 1.25P	1.10
19208	BT40 x SOM10 - 60	125.4	60	25	23.4	10.5	19	21.1	M10 x 1.5P	1.20
19210	BT40 x SOM12 - 70	135.4	70	31	31.5	12.5	21	22.8	M12 x 1.75P	1.20
19212	BT40 x SOM12 - 100	165.4	100	31	42.4	12.5	21	23.8	M12 x 1.75P	1.30
19214	BT40 x SOM16 - 80	145.4	80	30	48.2	17	25	29.1	M16 x 2.0P	1.20
19214.1	BT40 x SOM16 - 80	145.4	80	30	48.2	17	30	34.1	M16 x 2.0P	1.20
19230	BT50 x SOM6 - 60	161.8	60	25	12.4	6.5	13	14.1	M6 x 1.0P	3.00
19232	BT50 x SOM8 - 60	161.8	60	25	12.4	8.5	15	16.1	M8 x 1.25P	3.00
19234	BT50 x SOM10 - 60	161.8	60	25	12.4	10.5	19	20.1	M10 x 1.5P	3.00
19236	BT50 x SOM12 - 70	171.8	70	31	22.4	12.5	21	22.9	M12 x 1.75P	3.00
19238	BT50 x SOM12 - 100	201.8	100	31	52.4	12.5	21	25.6	M12 x 1.75P	3.00
19240	BT50 x SOM16 - 80	181.8	80	30	32.4	17	25	27.7	M16 x 2.0P	3.00

Features:

- ▶ For center coolant (DIN 69871-AD).

Product information:

- ▶ The pre-balance reaches G6.3 10,000 rpm. Higher balancing grade and revolution can be done upon request but additional charge is needed.
- ▶ AD+B type is available, please inform us when making an order.

STR Cutting Tool	RG Cutting Tool	DM Cutting Tool	Extension Spacer	Pull Stud
				
P.W-69	P.W-70	P.W-71	P.W-72	P.W-54~55

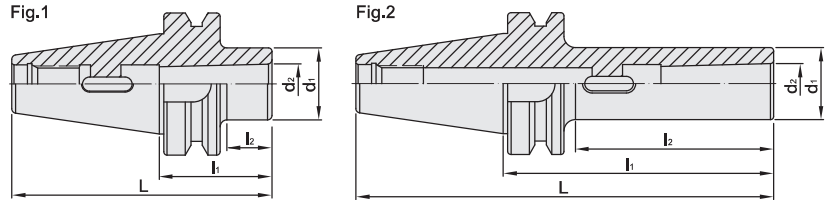


BT / MTA MORSE TAPER ADAPTER

TANG TYPE

BT / MTA 斜柄鑽頭套筒

(DIN 228-B)



MODEL NO.	TYPE	L	l ₁	l ₂	d ₁	d ₂	Fig	WEIGHT (KGS)
17001	BT30 x MTA1 - 45	93.4	45	20	25	12.065	1	0.50
17004	BT30 x MTA1 - 105	153.4	105	78	25	12.065	2	0.70
17006	BT30 x MTA2 - 60	108.4	60	35	32	17.78	1	0.54
17008	BT30 x MTA2 - 120	168.4	120	95	32	17.78	2	0.90
17010	BT30 x MTA3 - 80	128.4	80	56	40	23.825	1	0.72
17011	BT40 x MTA1 - 45	110.4	45	15	25	12.065	1	1.05
17013	BT40 x MTA1 - 120	185.4	120	83	25	12.065	2	1.32
17014	BT40 x MTA2 - 50	115.4	50	20	32	17.78	1	1.10
17017	BT40 x MTA2 - 120	185.4	120	88	32	17.78	2	1.42
17018	BT40 x MTA3 - 70	135.4	70	38	40	23.825	1	1.20
17021	BT40 x MTA3 - 135	200.4	135	102	40	23.825	2	1.70
17023	BT40 x MTA4 - 95	160.4	95	63	48	31.267	1	1.40
17025	BT40 x MTA4 - 165	230.4	165	133	48	31.267	2	2.50
17031	BT50 x MTA1 - 45	146.8	45	2	25	12.065	1	3.80
17033	BT50 x MTA1 - 120	221.8	120	74	25	12.065	2	4.30
17035	BT50 x MTA1 - 180	281.8	180	132	25	12.065	2	5.00
17036	BT50 x MTA2 - 60	161.8	60	17	32	17.78	1	4.00
17039	BT50 x MTA2 - 135	236.8	135	89	32	17.78	2	4.70
17041	BT50 x MTA2 - 180	281.8	180	132	32	17.78	2	5.00
17042	BT50 x MTA3 - 65	166.8	65	22	40	23.825	1	3.90
17046	BT50 x MTA3 - 150	251.8	150	107	40	23.825	2	5.00
17047	BT50 x MTA3 - 180	281.8	180	132	40	23.825	2	5.50
17048	BT50 x MTA4 - 95	196.8	95	52	48	31.267	1	4.20
17051	BT50 x MTA4 - 180	281.8	180	132	48	31.267	2	5.50
17053	BT50 x MTA5 - 105	206.8	105	62	63	44.399	1	4.30

Features:

- ▶ High accurate working process. Even though using prolonged drill, the concentricity is still within 0.015mm.

Product information:

- ▶ The pre-balance reaches G6.3 3,000 rpm. Higher balancing grade and revolution can be done upon request but additional charge is needed.

Pull Stud

P.W-54~55

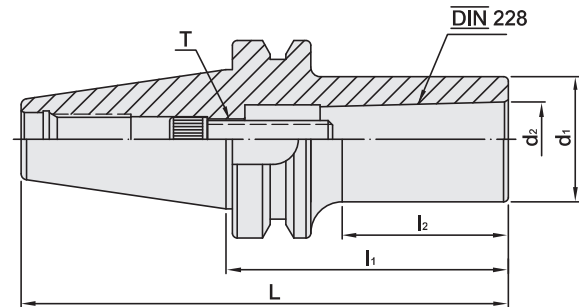
BT / MTB MORSE TAPER ADAPTER

DRAW BAR TYPE

BT

BT / MTB 斜柄鑽頭套筒

[DIN 6364]



MODEL NO.	TYPE	L	l ₁	l ₂	d ₁	d ₂	T	WEIGHT (KGS)
17001 - B	BT30 x MTB1 - 45	93.4	45	20	25	12.065	M6 x 1.0P 1/4" - 20	0.55
17006 - B	BT30 x MTB2 - 60	108.4	60	36	32	17.78	M10 x 1.5P 3/8" - 16	0.60
17011 - B	BT40 x MTB1 - 45	110.4	45	13	25	12.065	M6 x 1.0P 1/4" - 20	1.10
17014 - B	BT40 x MTB2 - 45	110.4	45	13	32	17.78	M10 x 1.5P 3/8" - 16	1.10
17017 - B - 185	BT40 x MTB2 - 185	250.4	185	148	32	17.78	M10 x 1.5P 3/8" - 16	1.90
17018 - B	BT40 x MTB3 - 75	140.4	75	45	40	23.825	M12 x 1.75P 1/2" - 12	1.30
17019 - B	BT40 x MTB3 - 90	155.4	90	53	40	23.825	M12 x 1.75P 1/2" - 12	1.40
17020 - B	BT40 x MTB3 - 120	185.4	120	83	40	23.825	M12 x 1.75P 1/2" - 12	1.80
17021 - B - 180	BT40 x MTB3 - 180	245.4	180	143	40	23.825	M12 x 1.75P 1/2" - 12	2.40
17024 - B	BT40 x MTB4 - 100	165.4	100	67	48	31.267	M16 x 2.0P 5/8" - 11	1.60
17024 - B - 120	BT40 x MTB4 - 120	185.4	120	87	48	31.267	M16 x 2.0P 5/8" - 11	1.80
17024 - B - 180	BT40 x MTB4 - 180	245.4	180	147	48	31.267	M16 x 2.0P 5/8" - 11	2.60
17031 - B	BT50 x MTB1 - 45	146.8	45	6	25	12.065	M6 x 1.0P 1/4" - 20	3.80
17036 - B	BT50 x MTB2 - 45	146.8	45	5	32	17.78	M10 x 1.5P 3/8" - 16	3.90
17042 - B	BT50 x MTB3 - 60	161.8	60	12	40	23.825	M12 x 1.75P 1/2" - 12	3.90
17048 - B - 75	BT50 x MTB4 - 75	176.8	75	32	48	31.267	M16 x 2.0P 5/8" - 11	4.20
17053 - B - 120	BT50 x MTB5 - 120	221.8	120	77	63	44.399	M24 x 3.0P 1" - 8	4.30

Features:

- ▶ High accurate working process. Even though using prolonged drill, the concentricity is still within 0.015mm.
- ▶ Please confirm if you'd like to order thread in metric or inch size when making an order.

Product information:

- ▶ The pre-balance reaches G6.3 3,000 rpm. Higher balancing grade and revolution can be done upon request but additional charge is needed.

Pull Stud

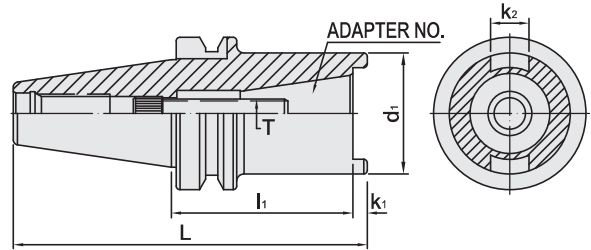


P.W-54~55



BT ADAPTER

BT 套筒



MODEL NO.	TYPE	NO.	L	l ₁	d ₁	k ₁	k ₂	T	TORQUE		WEIGHT (KGS)
									MIN.	MAX.	
19710	BT40 x TSA30M - 75	#30	146.4	75	50	6	15.9	M12 x 1.75P	45 Nm	55 Nm	1.80
19712	BT40 x TSA30U - 75	#30	146.4	75	50	6	15.9	1/2" - 12	45 Nm	55 Nm	1.80
11.501.32.030	BT40 x PSC32 - 30	PSC32	95.4	30	32	-	-	M12 x 1.5P	45 Nm	55 Nm	1.60
11.501.40.030	BT40 x PSC40 - 30	PSC40	95.4	30	40	-	-	M14 x 1.5P	45 Nm	55 Nm	1.60
11.501.50.030	BT40 x PSC50 - 30	PSC50	95.4	30	50	-	-	M16 x 1.5P	45 Nm	55 Nm	1.60
11.501.63.075	BT40 x PSC63 - 75	PSC63	140.4	75	63	-	-	M20 x 2.0P	65 Nm	75 Nm	1.80
11.501.80.135	BT40 x PSC80 - 135	PSC80	200.4	135	80	-	-	M20 x 2.0P	65 Nm	75 Nm	3.78
19722	BT50 x TSA30M - 75	#30	182.8	75	50	6	15.9	M12 x 1.75P	45 Nm	55 Nm	5.00
19724	BT50 x TSA30U - 75	#30	182.8	75	85	6	15.9	1/2" - 12	45 Nm	55 Nm	5.00
19726	BT50 x TSA40M - 75	#40	184.8	75	85	8	15.9	M16 x 2.0P	45 Nm	55 Nm	4.60
19728	BT50 x TSA40U - 75	#40	184.8	75	85	8	15.9	5/8" - 11	45 Nm	55 Nm	4.60
12.501.32.040	BT50 x PSC32 - 40	PSC32	141.8	40	32	-	-	M12 x 1.5P	45 Nm	55 Nm	4.60
12.501.40.040	BT50 x PSC40 - 40	PSC40	141.8	40	40	-	-	M14 x 1.5P	45 Nm	55 Nm	4.60
12.501.50.040	BT50 x PSC50 - 40	PSC50	141.8	40	50	-	-	M16 x 1.5P	45 Nm	55 Nm	4.60
12.501.63.100	BT50 x PSC63 - 100	PSC63	201.8	100	63	-	-	M20 x 2.0P	65 Nm	75 Nm	5.00
12.501.63.150	BT50 x PSC63 - 150	PSC63	251.8	150	63	-	-	M20 x 2.0P	65 Nm	75 Nm	5.93
12.501.63.200	BT50 x PSC63 - 200	PSC63	301.8	200	63	-	-	M20 x 2.0P	65 Nm	75 Nm	6.99
12.501.63.250	BT50 x PSC63 - 250	PSC63	351.8	250	63	-	-	M20 x 2.0P	65 Nm	75 Nm	8.06
12.501.63.300	BT50 x PSC63 - 300	PSC63	401.8	300	63	-	-	M20 x 2.0P	65 Nm	75 Nm	8.91
12.501.80.070	BT50 x PSC80 - 70	PSC80	171.8	70	80	-	-	M20 x 2.0P	65 Nm	75 Nm	3.86
12.501.80.120	BT50 x PSC80 - 120	PSC80	221.8	120	80	-	-	M20 x 2.0P	65 Nm	75 Nm	5.67

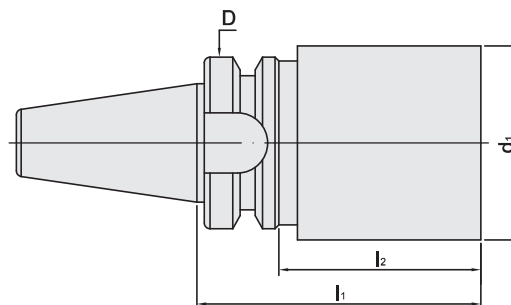
Pull Stud



P.W-54~55

BT BLANK

BT 素材



MODEL NO.	TYPE	D	d ₁	l ₁	l ₂	WEIGHT (KGS)
11.001.40.5.160	BT40 x ϕ 40.5 - 160	63	40.5	160	133	2.30
11.001.63.5.160	BT40 x ϕ 63.5 - 160	63	63.5	160	133	4.21
11.001.63.5.250	BT40 x ϕ 63.5 - 250	63	63.5	250	223	6.41
12.001.50.300	BT50 x ϕ 50 - 300	100	50	300	262	7.53
12.001.80.160	BT50 x ϕ 80 - 160	100	80	160	122	8.29
12.001.80.200	BT50 x ϕ 80 - 200	100	80	200	162	9.84
12.001.80.300	BT50 x ϕ 80 - 300	100	80	300	262	13.71

Pull Stud



P.W-54~55

